

IHRE REISE

*Antarktis, Machu Picchu,
 Amazonas & - Kreuzfahrt und
 Landreise*

Reisetermin

15.01.2026 - 09.02.2026

Reisedauer

26 Tage

Reederei / Schiff

Scenic Eclipse / SCENIC Luxury Cruises & Tours



Scenic Eclipse Veranda Suite A, Deck 8



Doppelbelegung



€28.930

pro Person

Einzelbelegung



€50.230

pro Person

Scenic Eclipse Deluxe Veranda Suite DA, Deck 5



Doppelbelegung



€28.985

pro Person

Einzelbelegung



€50.340

pro Person

Scenic Eclipse Deluxe Veranda Suite CA, Deck 6



Doppelbelegung


€28.985
 pro Person

Einzelbelegung


€50.340
 pro Person

Scenic Eclipse Deluxe Veranda Suite AA, Deck 7



Doppelbelegung


 Nicht verfügbar

Einzelbelegung


 Nicht verfügbar

Scenic Eclipse Deluxe Veranda Suite BA, Deck 7



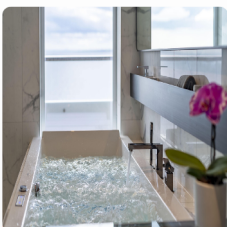
Doppelbelegung


 Nicht verfügbar

Einzelbelegung


 Nicht verfügbar

Scenic Eclipse Spa Suite SA, Deck 9



Doppelbelegung


 Nicht verfügbar

Einzelbelegung


 Nicht verfügbar

Scenic Eclipse Deluxe Veranda Suite DB, Deck 5



Doppelbelegung



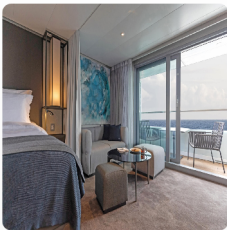
Nicht verfügbar

Einzelbelegung



Nicht verfügbar

Scenic Eclipse Grand Deluxe Veranda Suite DD, Deck 5



Doppelbelegung



Nicht verfügbar

Einzelbelegung



Nicht verfügbar

Scenic Eclipse Veranda Suite B, Deck 7



Doppelbelegung



Nicht verfügbar

Einzelbelegung



Nicht verfügbar

Scenic Eclipse Veranda Suite C, Deck 6



Doppelbelegung



Nicht verfügbar

Einzelbelegung



Nicht verfügbar

Scenic Eclipse Veranda Suite D, Deck 5



Doppelbelegung



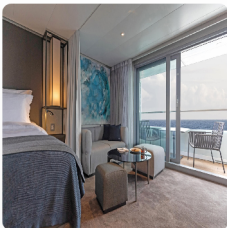
Nicht verfügbar

Einzelbelegung



Nicht verfügbar

Scenic Eclipse Grand Deluxe Veranda Suite AD, Deck 8



Doppelbelegung



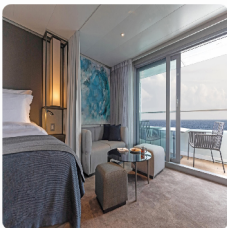
Nicht verfügbar

Einzelbelegung



Nicht verfügbar

Scenic Eclipse Grand Deluxe Veranda Suite BD, Deck 7



Doppelbelegung



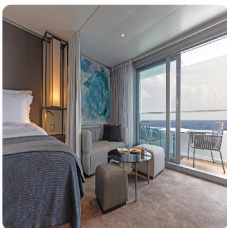
Nicht verfügbar

Einzelbelegung



Nicht verfügbar

Scenic Eclipse Grand Deluxe Veranda Suite CD, Deck 6



Doppelbelegung



Nicht verfügbar

Einzelbelegung



Nicht verfügbar

Scenic Eclipse Spa Suite SB, Deck 9



Doppelbelegung



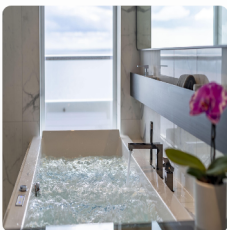
Nicht verfügbar

Einzelbelegung



Nicht verfügbar

Scenic Eclipse Spa Suite S, Deck 8



Doppelbelegung



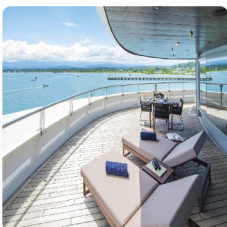
Nicht verfügbar

Einzelbelegung



Nicht verfügbar

Scenic Eclipse Grand Panorama Suite GP, Deck 6



Doppelbelegung



Nicht verfügbar

Einzelbelegung



Nicht verfügbar

Scenic Eclipse Panorama Suite P, Deck 8



Doppelbelegung



Nicht verfügbar

Einzelbelegung



Nicht verfügbar

Scenic Eclipse Owners Penthouse Suite OP, Deck 9



Doppelbelegung



Nicht verfügbar

Einzelbelegung



Nicht verfügbar

Scenic Eclipse Two-Bedroom Penthouse Suite TP, Deck 9



Doppelbelegung



Nicht verfügbar

Einzelbelegung



Nicht verfügbar



Buenos Aires, Argentina

Tag 1

Welcome to Buenos Aires, where you'll have an overnight hotel stay. Perhaps plan to spend some time in the city, nicknamed the 'Paris of South America'. Resplendent with Belle Epoque buildings, sidewalk cafes and green spaces, there's the fiery passion of Latin America – a collective love for football, flame-cooked meats (asado) and the tango.

Some of the highlights are La Boca, a colourful, creative mecca with a must-do art walk, and San Telmo, a former aristocratic neighbourhood that was abandoned during a 19th-century epidemic. Mansions were turned into conventillos (shared housing), boutique hotels, antique shops, and tango clubs, exuding a captivating bohemian vibe.

Buenos Aires > Ushuaia

Tag 2

Fly from Buenos Aires to Ushuaia, the main island of Tierra del Fuego and the southernmost city in the world. The Captain and crew will warmly greet you as you board your ultra-luxury Discovery Yacht, Scenic Eclipse.

Toast the start of your once-in-a-lifetime expedition as you depart South America and cruise through the calm and scenic Beagle Channel, named so for the ship that carried Charles Darwin on his five-year discovery journey. Admire the dramatic views of the Andean mountains from the comfort of your private verandah or from the Observation Deck with its commanding view of the bow.

At sea

Tag 3

Wake up in your own time as we cruise across the Drake Passage, the infamous waterway that connects South America to Antarctica. Perhaps ask your butler for breakfast to be delivered to your spacious suite or meet fellow guests in the Yacht Club.

Today, join an introductory presentation about your polar expedition by the Polar Discovery Team in the state-of-the-art theatre. Feel the excitement building as they explain how your Zodiac and other Discovery Excursions will work in the coming days. The theatre is where you can watch talks, lectures, movies and documentaries during the day. At night, enjoy world-class productions from musical theatre and cabaret to pop music, dance and fun interactive game shows.

At sea

Tag 4

Today you will enter Antarctic waters, an unpredictable but stunningly beautiful environment that always surprises. Put on your complimentary polar parka and head to the Observation Deck to spot icebergs for the first time – it's a feeling that will stay with you forever.

Watch out for whale blows in the distance and your expert polar Discovery team will be on hand to provide and answer any insightful information. Comprised of up to 20 members, this team of geologists, historians, ornithologists, marine biologists, and glaciologists is at the heart of your Antarctic Voyage.

Antarctica

Tag 5

Slide open the floor-to-ceiling doors of your verandah suite to see icebergs sculpted by nature and glacial mountains rising thousands of metres from the ocean. Antarctica is a birdwatcher's paradise, with more than 40 different species, so keep your eyes peeled for wandering albatrosses, which have the largest wingspan of any flying bird, as well as shearwaters, giant petrels and more.

Due to the extraordinary nature of the region, excursions throughout your Expedition Voyage are dependent on the ice and weather conditions. Your experienced Captain and specialist Discovery Team, who have made countless journeys to Antarctica, will use their expertise to design your voyage from day to day, making the most of 18–20 hours of daylight.

Discovery: Daily experiences may include cruising on Zodiacs, stepping ashore to view vast penguin rookeries or historic huts, and kayaking or paddle boarding around icebergs. Wherever your voyage takes you, you will have countless "pinch me" moments.

Antarctica

Portal Point^^ – a former British refuge hut – may be a potential landing site during your voyage.

Tag 6

Or you may visit Deception Island^^ as part of your itinerary. Nestled in the South Shetland Islands archipelago, it is one of the only places in the world that ships can sail directly into the centre of a submerged caldera of an active volcano. With her world-class design and state-of-the-art technology, Scenic Eclipse can sail through a rocky gap into the horseshoe-shaped harbour. The island is also home to a few small scientific outposts and hundreds of thousands of chinstrap penguins.

Tonight could be the night you enjoy Sushi^ @ Koko's with your new friends. Stay up late in the bar or retire to the library for a moment of blissful solitude before bed.

Antarctica

Various species of penguins can be found in Antarctic and the sub-Antarctic region, with around 12 million penguins living on the Peninsula, including Adélie, Chinstrap, Gentoo, and the very rare Emperor penguins. Guided by the expert Polar Discovery Team, you'll witness colonies up close; hear their mighty calls and watch as they clumsily waddle along and interact with each other.

Tag 7

Whales are another majestic creature you may encounter, whether a minke, a humpback or an Orca. Watch them from the comfort of your ultra-luxury Discovery Yacht, in a Zodiac with an experienced Polar Discovery Team member, or from their level in a kayak or stand-up paddleboard – a breathtaking experience.

Discovery: When enjoying daily Scenic Discovery excursions, ask for your expert Discovery Leader for photography tips and guidance on how to spot the wildlife around you. They will help you immortalise these incredible moments while cruising on the Zodiacs, kayaking and stand-up paddleboarding around impressive ice formations.

Antarctica

Tag 8

Lemaire Channel^^, renowned for its picturesque views and often referred to as 'Kodak Alley', could be our next exciting destination. If during your voyage the Scenic Eclipse weaves through this channel, make sure you set your alarm and embrace the cool air from the Observation Terrace. Pass through the 11-kilometre-long channel, just 700 metres wide at its narrowest point, and be amazed at the dramatic rocky mountains and glowing blue icebergs so close to the ship.

In between Scenic Discovery experiences, enjoy a specialty tea or coffee in the Observation Lounge and watch the world float by through Swarovski telescopes.

Antarctica

Tag 9

In the distance on a clear day you can see Mount Francis^^ standing tall as Anvers Island's highest peak, showcasing the rugged beauty of Antarctica. Every day is unique, you might get the chance to hike or spend time on the pebbled beach, enjoying the view surrounded by curious penguins.

Back on board, explore some of Scenic Eclipse's indulgent spaces, from the welcoming Observation Lounge to the expansive Senses Spa#. Soothe your muscles in the sauna or heated therapy lounge, join a yoga or Pilates class. Choose one of up to 10 world-class dining experiences on board tonight.

Antarctica

Tag 10

Be sure to pack your swimming suit because you could be going for a swim today. For many, the polar plunge is a once-in-a-lifetime opportunity and a rite of passage on an expedition to Antarctica. Once throughout your voyage, Scenic Eclipse will stop, and the team will set up the marina ready for the brave people who want to jump into the freezing Antarctic waters.

Excitement will spread through the Discovery Yacht, and you will start hearing the contagious nervous laughter. As you stand on the edge, ready to jump, you will feel the adrenaline rush while you second-guess whether this is a good idea. When you jump, the moment before you hit the water will feel like it goes forever, but soon, an invigorating, exciting, and surprisingly refreshing sensation will take over.

If you choose to skip the polar plunge, make sure you find a good viewing location as you feel the chills of everyone coming out of the water. Join them for a cup of hot chocolate or toast with a glass of whiskey.

At sea

Tag 11

Cruising the Drake Passage back to the tip of South America, there is plenty of time to indulge in the ultra-luxury of your Discovery Yacht and reflect on the magic moments you've experienced in the Southern Ocean.

Freshly squeezed juice, steaming barista-made coffee or tea delivered to your door by the butler will help start your day. Head to the gym for an invigorating workout or the studio for a Pilates class, some guided stretching or aerial yoga.

In the evening, settle in at the spacious Scenic Lounge Bar to enjoy your beverage of choice, whether it be aged whiskey or a glass of wine. With Scenic's signature all-inclusive ultra-luxury philosophy, indulge in top shelf spirits, over 130 whiskeys, a premium wine list and French champagne.

At sea > Ushuaia

Tag 12

Have you visited the bridge yet? Thanks to the Captain's open bridge policy, guests are welcome any time to learn more about the technical abilities of The World's First Discovery Yacht and see it in full operation. The bridge is also one of the best viewing areas on the ship.

Make sure you book a treatment# at the tranquil Senses Spa before your Discovery expedition ends. Perhaps an ESPA facial or massage# or an alternative therapy including Ayurvedic massage or Japanese shiatsu. Afterwards, hold on to that feeling of calm for a while longer in the Zen-like space of the Vitality Lounge.

Ushuaia, Argentina > Buenos Aires

Tag 13

After one last breakfast, bid farewell to your fellow travellers as you disembark Scenic Eclipse to fly to Buenos Aires, where a new journey of wonder begins with your handcrafted land tour.

Immerse yourself in the vibrant energy of this captivating destination. The colourful Argentine capital is known as the 'Paris of the Americas', an elegant city with pockets of unique character.

Buenos Aires > Sacred Valley

Tag 14

Bid farewell to Buenos Aires as you fly to Cuzco, the gateway to the Sacred Valley. Travel through breathtaking landscapes to your luxurious sanctuary set beside the Urubamba River amidst the majestic Andes. Your relaxing stay in the Sacred Valley allows you to experience the history, unique lifestyle, culture and majestic scenery of this heartland of the former Inca empire.

Tonight, delight in an unforgettable culinary experience at a Tapas Dinner with local performance.

Sacred Valley

Tag 15

Join your expert local guide for a walking tour of Ollantaytambo, the site where Manco Inca defeated the Spanish conquistadors. Indulge in an authentic Andean feast at Hacienda Huayoccari, where tradition comes to life through vibrant weaving demonstrations and stories of local customs and life. The afternoon invites you to wander the charming village of Urubamba at your leisure.

Sacred Valley

Tag 16

Today, tailor your day to your tastes and pace. Explore the ruins of Pisac, built by the Incas in the 15th century, and its vibrant markets. Peruvians from surrounding villages come to purchase their fruit, vegetables and meat, and you can find authentic crafts and clothing. Or marvel at the engineering marvels and mysteries of Moray, and the mesmerising Incan salt pans, where thousands of pools are dug into the mountainside.

Indulge in a culinary extravaganza featuring five tantalising meats, each prepared in a unique style using ingredients sourced from Tambo's own organic garden.

Sacred Valley > Machu Picchu

Tag 17

This morning, embark on one of the world's most spectacular train rides, a Vistadome rail journey that climbs through breathtaking landscapes to the legendary Machu Picchu. The most famous archaeological site in South America, this mountaintop citadel was built by the Incas in the 15th century but remained lost to history until it was rediscovered in the early 1900s. Explore the enigmatic ruins with expert guides, delving into the mysteries of this ancient site.

As night falls, retreat to your charming hotel.

Machu Picchu > Cuzco

Tag 18

Continue your journey by train to the charming city of Cuzco, the imperial capital of the Incas. The oldest continually occupied city on the continent, it sits at a soaring 3,399 metres above sea level, making it one of the highest settlements in the world.

You'll be welcomed to your luxurious hotel. Set inside a 500-year-old mansion, you'll spend two nights ensconced in the heart of this storied city, surrounded by opulence and history.

Cuzco

Tag 19

Unravel the secrets of Cuzco as you wander through its cobblestone streets and past awe-inspiring architecture. On your walking tour, you will uncover the history of this World Heritage-listed site where ancient Incan ruins sit alongside colonial whitewashed houses and grand Baroque palaces. Your final stop will be the imposing ruins of Sacsayhuamán fortress, where the carved stone blocks form the shape of a puma's head.

Enrich

Immerse yourself in the local community as you visit a school supported by Scenic, forging connections that transcend borders. (Availability dependent on school holidays).

Freechoice Dining:

Tonight, choose to dine at Inti Raymi for traditional Peruvian cuisine, or Cicciolina for a fusion of Peruvian and Italian flavours. While dining at La Cicciolina Restaurant, enjoy a view of Calle Hatunrumiyoc, where you can watch people posing for photos in front of the famous 12 Angle Stone.

Cuzco > Amazon

Tag 20

This morning, set off for an adventure in the heart of the rainforest. Fly to Iquitos, a sleepy port city on the banks of the Amazon River, and step into a world of luxury aboard Delfin III. This boutique ship will be your floating sanctuary for the next four nights. Settle into your spacious suite, with its floor to ceiling windows looking out over the calm river, and prepare to immerse yourself in the natural wonders of the Amazon.

Amazon

Tag 21

Embark on a series of intimate excursions that will take you deep into the heart of the Amazon rainforest. You will explore remote tributaries of the Amazon River, trek along jungle trails teeming with life, visit Indigenous communities living as they have for centuries, and spot exotic wildlife hiding amongst the lush greenery. Whether cruising along the waterways or venturing into the lush wilderness with expert naturalist guides, every moment promises a new adventure.

Amazon

Tag 22

Continue your exploration of the Amazon, discovering its hidden treasures and untamed beauty. Glide silently along narrow tributaries, guided by experts sharing fascinating river tales. Explore pristine habitats, from mangrove swamps to bamboo stands, uncovering nature's delicate balance. Each day offers new discoveries and moments of wonder in this extraordinary wilderness.

Amazon

Tag 23

Awaken to the rainforest's symphony. Be immersed in the rainforest's natural rhythms, tracking wildlife or simply basking in serenity. Activities vary each day so you could be kayaking or stand-up paddleboarding along the glassy river, fishing for gigantic Amazon catfish, listening to the calls of more than 1,500 species of bird and scanning the water for the elusive pink dolphin. As night falls, retreat to your floating sanctuary, lulled by the river's gentle embrace. Reflect on the day's profound beauty as the sun dips below the horizon.

Amazon > Lima

Tag 24

Bid farewell to the Amazon and your Tour Director today as you fly to Lima, the vibrant capital of Peru. This cosmopolitan city is home to an incredible food scene, some of the world's finest restaurants, compelling museums and contemporary galleries.

Check in for a two-night stay at your contemporary hotel set beside the beach.

Lima

Tag 25

Embark on a captivating exploration of Lima, a city that seamlessly blends history and modernity. From the meticulously restored colonial architecture to the hidden gems tucked away in its bustling streets, your expert local guide will reveal the city's rich tapestry of culture and heritage. Beyond Baroque balconies lie secret treasures from the age-old library to the patchwork of bones that line the ossuary of the city's grand Franciscan monastery.

Enjoy a city tour with a welcome lunch, exploring the charms of colonial and modern Lima. Admire cathedrals and convents, visit San Isidro financial district and tour the famed Larco Museum.

Lima

Tag 26

Your journey concludes today in Lima. Bid farewell to your fellow travellers as you transfer to the airport, carrying with you a lifetime of wonderful memories.

#Scenic Eclipse spa treatments at additional cost. +All drinks on board Scenic Eclipse, including those stocked in your mini bar, are included, except for a very small number of rare, fine and vintage wines, Champagnes and spirits. ~Subject to weather and operational conditions. Sightings cannot be guaranteed.? ^Flights on board our two helicopters and submersible experiences are at additional cost, subject to regulatory approval, availability, weight restrictions, medical approval and weather, ice and tidal conditions. Helicopter is not available in South Georgia.

The itinerary on this page is a guide only and may be amended for operational reasons. As such Scenic cannot guarantee the tour will operate unaltered from the itinerary stated above. Please refer to our terms and conditions for further information.

Im Preis inbegriffen

- Services und Annehmlichkeiten an Bord
- Maximal 229 Gäste an Bord (200 in den Polarregionen)
- Großzügige Suiten mit privater Veranda 2:1-Verhältnis
- Gäste- und Butlerservice für jeden Gast
- Zehn kulinarische Erlebnisse in neun Gourmet-Menues – von gemütlicher Atmosphäre bis zum eleganten Fine Dining
- Auswahl an Premium-Markengetränken mit über 101 Whiskysorten
- Scenic Discovery Ausflüge mit dem Zodiac
- Komplettes Kajakprogramm und Stand-up-Paddle-Boarding
- Kostenloser Expeditionsarka und Wasserflasche sowie die Nutzung von speziellen Polartiefeln
- Interessantes Vortrags- und Bildungsprogramm mit Experten an Bord
- Spezielle Observation Lounge und Terrasse für die beste Aussicht
- Swarovski-Teleskope an Deck sowie Ferngläser in der Suite, damit Sie keinen aufregenden Momente verpassen
- Senses Spa** auf 551 m² mit Fitnesscenter, Yoga- und Pilatesstudio
- Außen-Vitalpools nachskandinavischem Vorbild
- Modernes Theater mittäglichem Unterhaltungs- und Bildungsangebot
- WLAN inclusive
- Inlandsflüge inkl. Gebühren
- Flughafentransfers
- Trinkgelder an Bord und an Land

Nicht im Preis inbegriffen

- Internationale Flüge, sofern nicht angegeben
- Reiseversicherungen
- Visa- oder Passgebühren (falls erforderlich)
- persönliche Ausgaben (Einkäufe, optionale Ausflüge)
- sonstige im Programm nicht genannte Leistungen

Ihr Schiff

Ihr Schiff ist die "Scenic Eclipse". Ausführlich stellen wir Ihnen dieses Schiff auf unseren Schiffseiten vor. [Ausführliche Informationen](#) zu diesem Schiff.

Passagiere

199

Bordsprachen



Eisklasse

PC-6

Special

Helikopter

