

IHRE REISE

# Entdeckungen der Wikinger: Von Island nach Grönland

Reisetermin

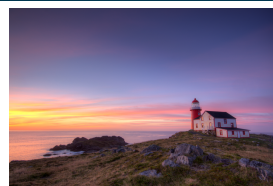
18.08.2026 - 13.09.2026

Reisedauer

27 Tage

Reederei / Schiff

Scenic Eclipse / SCENIC Luxury Cruises & Tours



## Scenic Eclipse Deluxe Veranda Suite CA, Deck 6



Doppelbelegung



**€33.461**

pro Person

Einzelbelegung



**€66.871**

pro Person

## Scenic Eclipse Deluxe Veranda Suite DB, Deck 5



Doppelbelegung



**€33.461**

pro Person

Einzelbelegung



**€66.871**

pro Person

## Scenic Eclipse Deluxe Veranda Suite DA, Deck 5



Doppelbelegung



**€33.461**

pro Person

Einzelbelegung



**€66.871**

pro Person

Scenic Eclipse Deluxe Veranda Suite AA, Deck 7



*Doppelbelegung*

  
**€35.151**  
 pro Person

*Einzelbelegung*

  
**€70.251**  
 pro Person

Scenic Eclipse Deluxe Veranda Suite BA, Deck 7



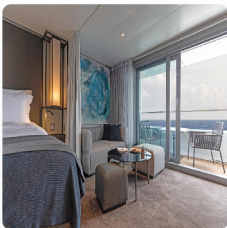
*Doppelbelegung*

  
**€35.151**  
 pro Person

*Einzelbelegung*

  
**€70.251**  
 pro Person

Scenic Eclipse Grand Deluxe Veranda Suite CD, Deck 6



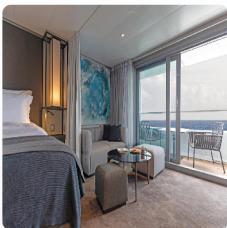
*Doppelbelegung*

  
**€35.671**  
 pro Person

*Einzelbelegung*

  
**€71.291**  
 pro Person

Scenic Eclipse Grand Deluxe Veranda Suite DD, Deck 5



*Doppelbelegung*

  
**€35.671**  
 pro Person

*Einzelbelegung*

  
**€71.291**  
 pro Person

Scenic Eclipse Grand Deluxe Veranda Suite AD, Deck 8



*Doppelbelegung*

  
**€36.711**  
 pro Person

*Einzelbelegung*

  
**€73.371**  
 pro Person

Scenic Eclipse Spa Suite S, Deck 8



*Doppelbelegung*

  
**€45.031**  
 pro Person

*Einzelbelegung*

  
**€90.011**  
 pro Person

Scenic Eclipse Spa Suite SB, Deck 9



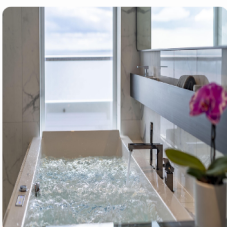
*Doppelbelegung*

  
**€45.551**  
 pro Person

*Einzelbelegung*

  
**€91.051**  
 pro Person

Scenic Eclipse Spa Suite SA, Deck 9



*Doppelbelegung*

  
**€45.551**  
 pro Person

*Einzelbelegung*

  
**€91.051**  
 pro Person

Scenic Eclipse Panorama Suite P, Deck 8



*Doppelbelegung*

  
**€75.061**  
 pro Person

*Einzelbelegung*

  
**€150.071**  
 pro Person

Scenic Eclipse Grand Panorama Suite GP, Deck 6



*Doppelbelegung*

  
**€81.171**  
 pro Person

*Einzelbelegung*

  
**€162.291**  
 pro Person

Scenic Eclipse Owners Penthouse Suite OP, Deck 9



*Doppelbelegung*

  
**€90.661**  
 pro Person

*Einzelbelegung*

  
**€181.271**  
 pro Person

Scenic Eclipse Veranda Suite A, Deck 8



*Doppelbelegung*

  
 Nicht verfügbar

*Einzelbelegung*

  
 Nicht verfügbar



Scenic Eclipse Grand Deluxe Veranda Suite BD, Deck 7



*Doppelbelegung*



Nicht verfügbar

*Einzelbelegung*



Nicht verfügbar

Scenic Eclipse Veranda Suite B, Deck 7



*Doppelbelegung*



Nicht verfügbar

*Einzelbelegung*



Nicht verfügbar

Scenic Eclipse Veranda Suite D, Deck 5



*Doppelbelegung*



Nicht verfügbar

*Einzelbelegung*



Nicht verfügbar

Scenic Eclipse Veranda Suite C, Deck 6



*Doppelbelegung*



Nicht verfügbar

*Einzelbelegung*



Nicht verfügbar

Scenic Eclipse Two-Bedroom Penthouse Suite TP, Deck 9



Doppelbelegung

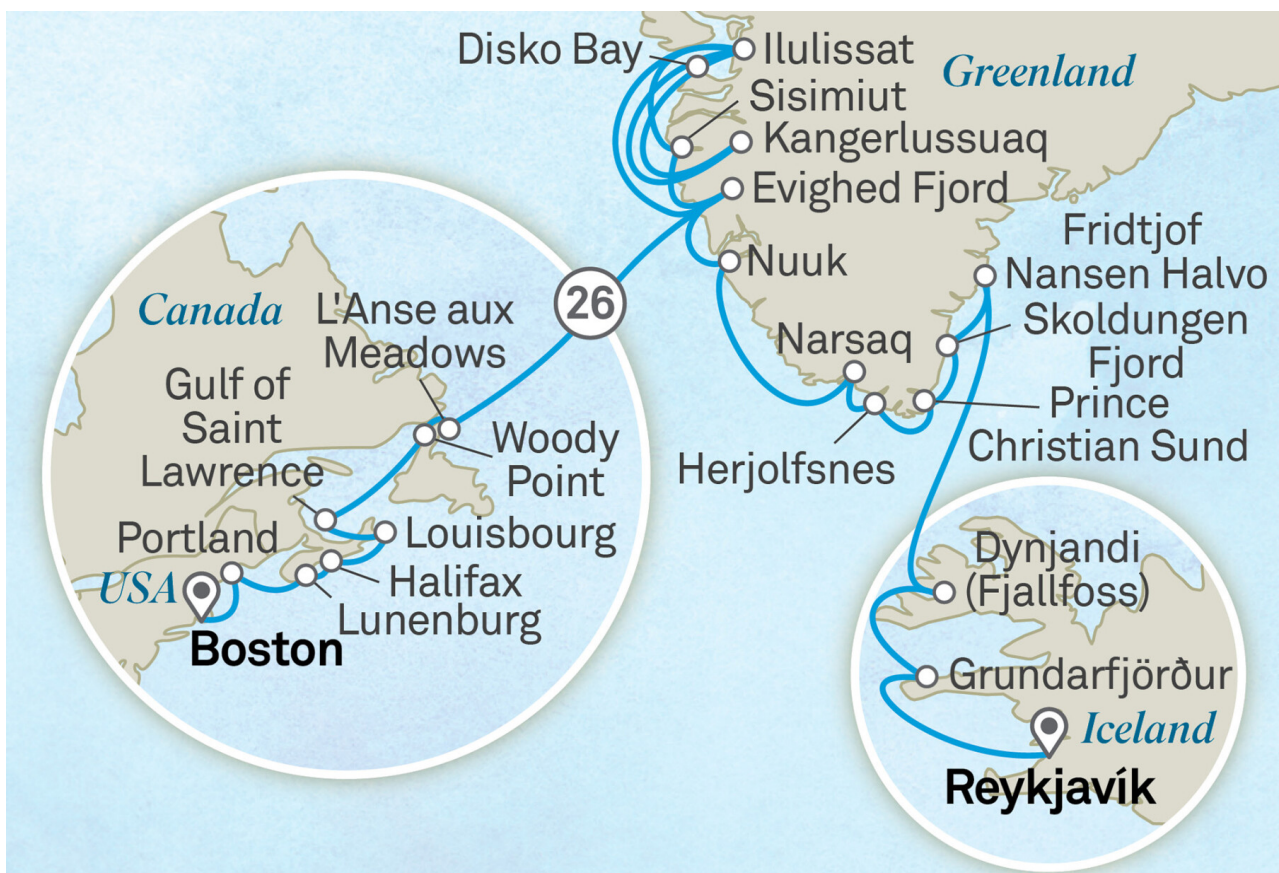


Nicht verfügbar

Einzelbelegung



Nicht verfügbar



## Reykjavik

Welcome to Reykjavik, the world's northernmost capital city. Your journey begins here in Iceland's quirky and creative heart.

Tag 1

This afternoon, you'll meet the Captain and crew of your ultra-luxury Discovery Yacht, Scenic Eclipse. Be welcomed on board with a glass of Champagne and explore your spacious suite. Meet your fellow guests for a drink in the Sky Bar as you toast to the start of an epic journey.

Please book your flight to arrive into Reykjavik prior to 02:00 PM.

## Grundarfjörður

Tag 2

Grundarfjörður is a picturesque town nestled in the heart of Iceland's stunning Snæfellsnes Peninsula. Surrounded by towering mountains and pristine fjords, Grundarfjörður offers a captivating blend of natural beauty and Icelandic charm. Explore the quaint streets lined with colourful houses, or venture into the nearby wilderness to discover hidden waterfalls and volcanic landscapes. Have your camera ready to catch a glimpse of the iconic Kirkjufell mountain, a favourite among photographers and nature enthusiasts.

## Dynjandivogur Waterfall

Tag 3

Weather permitting, today we'll visit the jewel of the Westfjords, Dynjandi Waterfall. Feel the freezing mist on your face as you admire the cascading bridal veil falls and discover why it was nicknamed 'the thunder'. Tumbling down seven tiers over 100 metres, it is one of the most beautiful waterfalls in Iceland. Marvel at nature's grandeur and wildlife spectacle as you sail through this remote corner of Iceland.

## At Sea

Tag 4

Enjoy a relaxing day at sea as you make your way west towards Greenland. Perhaps ask your butler to bring breakfast to your suite, to be enjoyed as you watch the icy ocean slip by from your private verandah. Then explore some of the indulgent spaces on board, from the welcoming Observation Lounge to the indulgent Senses Spa# with its sauna and heated therapy lounge.

Join the experts from the Discovery Team for a lecture or talk about upcoming ports, then sit back with your favourite cocktail for an evening of entertainment in the state-of-the-art-theatre.

## Fridtjof Nansen Halvo Glacier

Tag 5

Unlike the rest of Greenland, the Sermersooq municipality (where the Fridtjof Nansen peninsula is located) is smooth and unbroken terrain. Here, the magnificent Greenland Ice Sheet flows right to the shore. The peninsula gets its name from famed explorer Fridtjof Nansen, who launched his pioneering Greenland venture from Umivik Bay. This 1888 expedition confirmed that Greenland was completely covered in ice.

Over the next seven days in Greenland, countless adventures await, from exhilarating whale watching to thrilling kayak excursions and invigorating polar plunges, promising unforgettable experiences.

## Skjoldungen Fjord

Tag 6

Glaciers calving, rivers flowing, towering rock walls and colourful forests - the Skjoldungen Fjord is spectacular. Look up to admire huge crevasses and freestanding pillars of ice standing silhouetted against the blue Greenland sky. On the lower slopes, Arctic wildflowers will bloom amongst the dwarf birch and willow trees. Join the Discovery Team on the Observation Deck as nimble Scenic Eclipse weaves through numerous icebergs in this narrow channel and learn about the archaeological remains that have been found in this region, suggesting people lived here over 4,000 years ago.

## Cruising Prince Christian Sound > Herjolfsnes

Tag 7

Carving a breathtaking, naturally formed path that separates the mainland from the islands of Cape Farewell, Prince Christian Sound is one of Greenland's most scenic waterways and a highlight of any cruise in the region. Over a hundred kilometres in length, and flanked by magnificent glaciers and granite cliffs, this narrow passage is only accessible during summer, when the largest ice blockades melt away.

With her elegant design and state-of-the-art technology, Scenic Eclipse brings you closer to the towering glaciers, icebergs and imposing peaks for unmissable photo opportunities.

## Narsaq

Tag 8

Set on the southern tip of Greenland, Narsaq is a striking agricultural town located on the edge of a fjord. It's known for its lush farmland, hardy sheep, legacy of Greenlandic cowboys and intriguing Norse history. In the 1960s, a long house was unearthed here, and it is believed to be the very first place Erik the Red settled in Greenland in the 10th century. Visit the Narsaq Museum, set in historic buildings around the old harbour, to learn more about the area's rich heritage.

## Nuuk

Tag 9

Clinging to a jagged peninsula on the southwest coast of Greenland, Nuuk is the island's capital and largest city. The area has been inhabited since 2200BC, though the present town was only established in 1728. Colourful wooden buildings can be seen around the shore, while more modern apartment buildings house most of the city's 20,000 inhabitants. A guided tour through the picturesque Old Harbour reveals history and traditions that remain strong. Nuuk is also becoming known as a centre of modern Nordic culture, with edgy architecture inspired by the Northern Lights and innovative restaurants using local ingredients.

## Evighet Fjord

Tag 10

Enjoy a slow day cruising through Evighet Fjord, or 'Eternity Fjord', considered one of the most beautiful in Greenland. Stretching for more than 75 kilometres, you'll be awed by the endless fields of ice glittering under the sun. Tall, jagged peaks threaded with glaciers rise straight up out of the calm blue waters. Many of the glaciers are very active and you will likely hear chunks of ice calving away and collapsing loudly into the ocean. In Evighet Fjord, you'll feel the beauty and power of nature all around you.

## Ilulissat & Disko Bay

Tag 11

Spectacular days await as you cruise Disko Bay. Ilulissat is the main town on the bay, named from the Inuit word for 'iceberg'. It's famous for the large number of icebergs breaking away from the nearby Ilulissat Icefjord, a World Heritage-listed site. The Icefjord is the mouth of the vast Sermeq Kujalleq Glacier, one of the world's fastest moving and most active glaciers, calving a remarkable 46 cubic kilometres of ice annually. Listen for the rumbling sounds in the distance as huge chunks of ice break from the glacier and tumble into the water below.

## Kangerlussuaq

Tag 12

After days of exploration, enjoy some much-needed relaxation as you cruise through the Kangerlussuaq Fjord today. Towering cliffs and serene waters create a mesmerising backdrop as you enjoy breakfast on your verandah or lunch at the relaxed Azure Bar & Café. Graze the day away and enjoy Scenic Eclipse's all-inclusive premium beverages to ensure you'll find something that suits your taste perfectly.

As this is your last full day on board, take some time for a dip in the temperature-controlled Vitality Pools, a treatment in the Senses Spa#, an aerial yoga class in the PURE: Yoga & Pilates studio or an exquisite tea in the Observation Lounge.

## Kangerlussuaq

Tag 13

While it has long been known as the gateway to Greenland, Kangerlussuaq is a worthy destination in its own right. The World Heritage-listed town boasts the world's second-largest ice cap at its doorstep and free-roaming herds of arctic game. Here, you'll visit the "By Heart" store for Musk-ox wool talks and traditional kaffemik events and join a city tour to learn about the American history of this small, inland town.

## At Sea

Tag 14

After a restorative night of rest in your ultra-luxury suite, wake on your own time. The day is yours to spend exactly as you wish, so take some time to explore the ship and familiarise yourself with all the areas on board your new ultra-luxury home. Visit the Sky Bar and outdoor Vitality Pool on Deck 10. Step into the tranquil Senses Spa# on Deck 6 with its steam rooms, saunas, plunge pool and heated therapy lounge.

Then join the Discovery Team in the state-of-the-art theatre for an introductory lecture where they'll share their insights about your upcoming ports.

## Ilulissat & Disko Bay

Tag 15

Spectacular days await as you cruise Disko Bay. Ilulissat is the main town on the bay, named from the Inuit word for 'iceberg'. It's famous for the large number of icebergs breaking away from the nearby Ilulissat Icefjord, a World Heritage-listed site. The Icefjord is the mouth of the vast Sermeq Kujalleq Glacier, one of the world's fastest moving and most active glaciers, calving a remarkable 46 cubic kilometres of ice annually. Listen for the rumbling sounds in the distance as huge chunks of ice break from the glacier and tumble into the water below.

## Eqip Sermia Glacier

Tag 16

Expect more thundering ice today as you sail close to the Eqip Sermia Glacier, one of Greenland's most active glaciers. Scenic Eclipse will be able to get close to the sheer front of the glacier, so you can hear and feel the huge blocks of ice calving into the water. The expert Discovery Team will be on hand to guide you through the glacier's activity, showcasing its awe-inspiring beauty and fascinating history. Witness the breathtaking sight of towering ice walls and shimmering blue hues nestled amidst Greenland's pristine landscapes.

## Sisimiut

Tag 17

Sitting around 40 kilometres north of the Arctic Circle, Sisimiut is the second-largest town in Greenland. With colourful houses sprinkled around a picturesque bay, the town is bathed in perpetual sunlight during the summer months. Explore Sisimiut's rich history, dating back some 4,500 years, at the local museum, which has a collection of ancient Saqqaq artifacts. You'll have the opportunity to purchase souvenirs crafted from qiviut, the inner wool of a muskox, such as scarves, hats, or mittens. Immerse yourself in authentic interactions with local communities, adding depth and authenticity to your Arctic experience.

## Evighed Fjord

Tag 18

Enjoy a slow day cruising through Evighed Fjord, or 'Eternity Fjord', considered one of the most beautiful in Greenland. Stretching for more than 75 kilometres, you'll be awed by the endless fields of ice glittering under the sun. Tall, jagged peaks threaded with glaciers rise straight up out of the calm blue waters. Many of the glaciers are very active and you will likely hear chunks of ice calving away and collapsing loudly into the ocean. In Evighed Fjord, you'll feel the beauty and power of nature all around you.

## At Sea

Tag 19

Freshly squeezed juice, steaming barista-made coffee or tea delivered to your door by the butler will help you start your day. After a busy start to your Arctic journey, some relaxation could be on the menu today. Curl up with a book or your binoculars on the hanging chairs on Deck 7, join a Pilates class or guided stretching session in the PURE studio, or enjoy a long lunch with new friends at Azure Bar & Cafe.

As Scenic Eclipse sails through the Davis Strait, linking Baffin Bay with the Labrador Sea, marvel at its rich marine life and hear the Discovery Team talk about its historical significance.

## At Sea

Tag 20

For relaxation and wellbeing at sea, the indulgent Senses Spa awaits on Deck 6. Inside this luxurious retreat you can be pampered with a range of holistic ESPA treatments\* including massages, facials, manicures and pedicures. A range of alternative therapies are on offer, like Japanese shiatsu and Indian Ayurvedic massage. Afterwards, hold on to that feeling of calm for a while longer in the Zen-like space of the Vitality Lounge.

You'll also find Nordic bathing experiences, infra-red saunas, chromo-therapy pressure showers, and separate steam rooms and relaxation lounges for men and women.

## L'Anse aux Meadows

Tag 21

Sitting at the northern tip of the island of Newfoundland, L'Anse aux Meadows is the site of the first recorded European contact with North America. It's a true milestone in the history of human migration and discovery. Now a World Heritage Site, it marks the sole Viking-established settlement on the continent, dating back to the 11th century. The archaeological remnants, including remnants of wood-framed peat-turf buildings, mirror those found in Norse Greenland Iceland. Exploring the site, you'll embark on a fascinating journey tracing the footsteps of Vikings who arrived in North America centuries before Columbus.

## Woody Point

Tag 22

Scenic Eclipse will continue sailing down the west coast of Newfoundland, bound for Bonne Bay and Woody Point. These small towns are nestled within Gros Morne National Park, a World Heritage-listed site that was formed over 485 million years. This sprawling and beautiful park is made up of strikingly diverse landscapes, from moody mountains and deep fjords to barren tablelands and deserted beaches. On the water, the cove is divided into Inner and Outer Bonne Bay. Inner Bonne Bay boasts serene wooded coves and sandy beaches, while Outer Bonne Bay serves as the gateway to the majestic Bonne Bay fjord.

## Louisbourg

Tag 23

Step into a piece of living history when you go ashore at Louisbourg on Cape Breton Island. This well-preserved 18th century fortress will immerse you in French colonial life amidst charming cobblestone streets and historic buildings. It's the largest historical reconstruction in North America and authentic fortifications, kitchen gardens and homes sit alongside the original ruins. Uncover the secrets of this World Heritage-listed site as you wander through its picturesque streets and soak in the unique atmosphere.

## Halifax

Tag 24

Halifax, Nova Scotia's dynamic capital, has long been tied to the sea. It has one of the largest and deepest ice-free harbours in the world, and has been an important military and commercial port for more than 250 years. Today, you can learn about its rich cultural heritage through the city's many museums and historical sites. Wander through bustling downtown streets and picturesque waterfronts, savouring maritime delights and charming cafes. A late departure gives you time to sample the city's famed live music scene, which takes over historic pubs and cosy venues every night of the week.

## Lunenburg

Tag 25

Lunenburg is one of Canada's most beautiful towns, a World Heritage-listed site where 70 per cent of the original buildings from the 18th and 19th centuries still stand. It is the best surviving example of a British colonial settlement in North America, set out along an orderly grid pattern. You'll be charmed by its picturesque colourful houses and architectural wonders like the Lunenburg Academy, the pink Wedding Cake House, and St. John's Anglican Church. The historic waterfront is now home to a lively mix of restaurants, breweries, distilleries and boutiques, all of which embrace the town's proud seafaring legacy.

## Portland, Maine

Tag 26

Crossing into the United States, welcome to the land of lighthouses and lobsters. This bustling, modern city has a long maritime history and miles of pristine beaches. Discover Victorian architecture, craft breweries, a thriving arts scene and world-class cuisine, then explore the outdoor experiences that await just outside of the city. Explore the city highlights with a visit to historic Portland Head Light and the charming seaside town of Kennebunkport or discover the lighthouses of the South Portland Greenbelt Pathway by bicycle on a guided tour.

## Boston

Tag 27

Your journey concludes this morning in Boston. The capital of the state of Massachusetts, Boston is one of the oldest cities in America and the cradle of the American Revolution.

After a final delicious breakfast, farewell the crew and new friends who shared this incredible voyage with you. You'll be transferred to the airport for your onward journey or return flight home, taking with you memories that will last a lifetime.

Please book your flight to depart out of Boston after 12:00 PM.

+All drinks on board, including those stocked in your mini bar, are included, except for a very small number of rare, fine and vintage wines, Champagnes and spirits. #Spa treatments at additional cost. ~Kayaking may not operate in all locations.

Please note the itinerary is a guide and may be subject to changes for operational reasons. Please refer to our terms and conditions for further information.



#### **Im Preis inbegriffen**

- Services und Annehmlichkeiten an Bord
- Maximal 229 Gäste an Bord (200 in den Polarregionen)
- Großzügige Suiten mit privater Veranda 2:1-Verhältnis
- Gäste- und Butlerservice für jeden Gast
- Zehn kulinarische Erlebnisse in neun Gourmet-Menues – von gemütlicher Atmosphäre bis zum eleganten Fine Dining
- Auswahl an Premium-Markengetränken mit über 101 Whiskysorten
- Scenic Discovery Ausflüge mit dem Zodiac
- Komplettes Kajakprogramm und Stand-up-Paddle-Boarding
- Kostenloser Expeditionsarka und Wasserflasche sowie die Nutzung von speziellen Polartiefeln
- Interessantes Vortrags- und Bildungsprogramm mit Experten an Bord
- Spezielle Observation Lounge und Terrasse für die beste Aussicht
- Swarovski-Teleskope an Deck sowie Ferngläser in der Suite, damit Sie keinen aufregenden Momente verpassen
- Senses Spa\*\* auf 551 m<sup>2</sup> mit Fitnesscenter, Yoga- und Pilatesstudio
- Außen-Vitalpools nachskandinavischem Vorbild
- Modernes Theater mittäglichem Unterhaltungs- und Bildungsangebot
- WLAN inclusive
- Inlandsflüge inkl. Gebühren
- Flughafentransfers
- Trinkgelder an Bord und an Land

---

#### **Nicht im Preis inbegriffen**

- Internationale Flüge, sofern nicht angegeben
- Reiseversicherungen
- Visa- oder Passgebühren (falls erforderlich)
- persönliche Ausgaben (Einkäufe, optionale Ausflüge)
- sonstige im Programm nicht genannte Leistungen

## Ihr Schiff

Ihr Schiff ist die "Scenic Eclipse". Ausführlich stellen wir Ihnen dieses Schiff auf unseren Schiffseiten vor. [Ausführliche Informationen](#) zu diesem Schiff.

Passagiere

199

Bordsprachen



Eisklasse

PC-6

Special

Helikopter

