

IHRE REISE

Abenteuer Südgrönland – Die majestätische alpine Arktis

Reisetermin
 29.07.2025 - 10.08.2025

Reisedauer
 13 Tage

Reederei / Schiff
 Ultramarine / Quark Expeditions



Explorer Suite



Doppelbelegung


€ 11.240
 pro Person

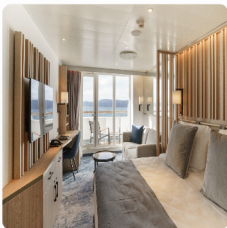
Einzelbelegung


€ 18.128
 pro Person

Gemeinschaftsbelegung


€ 11.240
 pro Person

Ultramarine Balkon Suite



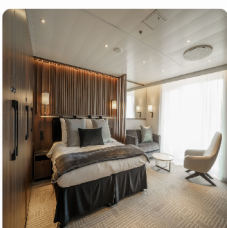
Doppelbelegung


€ 12.200
 pro Person

Einzelbelegung


€ 19.760
 pro Person

Deluxe Balkon Suite




Doppelbelegung


€ 14.180
 pro Person


Einzelbelegung


€ 26.960
 pro Person

Terrace Suite




Doppelbelegung



€ 14.660

pro Person

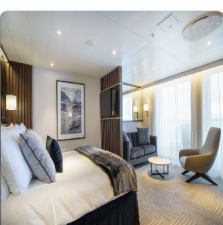
Einzelbelegung



€ 27.920

pro Person

Penthouse Suite




Doppelbelegung



€ 15.200

pro Person

Einzelbelegung



€ 29.000

pro Person

Owner's Suite



Doppelbelegung



€ 19.100

pro Person


Einzelbelegung




€ 36.800

pro Person

Explorerer Dreibettkabine




Dreibettbelegung



Nicht verfügbar

Gemeinschaftsbelegung



Nicht verfügbar

Ultra Suite



Doppelbelegung



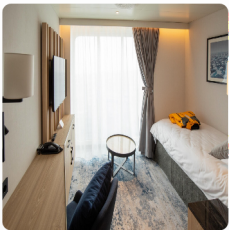
Nicht verfügbar

Einzelbelegung



Nicht verfügbar

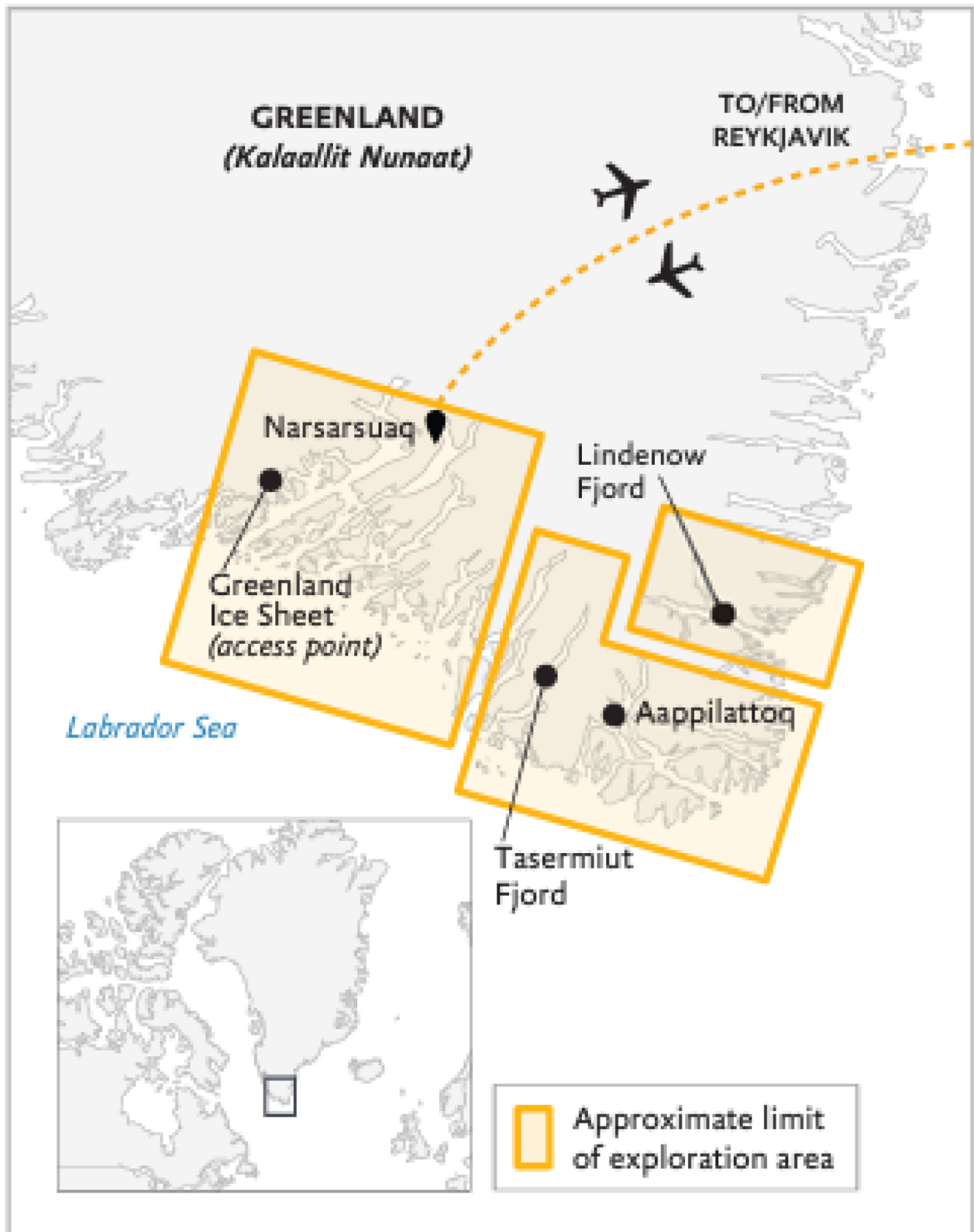
Panorama Einzelkabine



Einzelbelegung



Nicht verfügbar



Reykjavík, Iceland

ARRIVE IN REYKJAVÍK

Day 1

Arrive in the Icelandic capital and make your way to your included hotel. You will have the rest of the day to explore the city on your own.

Nuuk, Greenland

FLY TO NUUK

Day 2

In the morning after breakfast, guests and their luggage will be transferred to the airport for their charter flight to the Greenlandic capital of Nuuk. This picturesque city of 17,000 is situated on a fjord with the Sermitsiaq mountain in the background. Upon arrival, guests will be transferred to their ship.

Cruising

FROM NUUK TO THE WESTLANDS

Days 3 to 5

Today, we'll head south along the spectacular west coast of Greenland on our way to the The Westlands. Following in the footsteps of the Greenlandic Norse into the Western fjords, it's easy to appreciate why Erik the Red chose this land as his home and gave Greenland its name: every direction you look rewards visitors with vistas of blue, ice-strewn waters set against a breathtaking backdrop of lush, verdant valleys and pastures bursting with blooms. Unique to Greenland, and indeed the entire Arctic, warm microclimates deep in the fjords have created a surprisingly fertile Arctic Garden of Eden. South Greenlandic farming traditions dating back to Viking days are still kept alive. Many families work their remote sheep farms along the shores of the fjords, their lives very much attuned to the seasons as they produce a variety of organic home-grown produce (such as potatoes, turnips and kale). Also in the West, we find the perfect access points to the Greenland Ice Sheet, which we'll reach by helicopter. You'll enjoy the most incredible views of the largest mass of ice in the northern hemisphere and second largest in the world, flowing from the heights of the polar plateau to sea level. Become one of the very few people to ever set foot on this incredible body of ice during our included Greenland Ice Sheet Experience. Over these two days you will have the opportunity to explore the Ice Sheet, hike the surrounding foothills, cruise or paddle through the azure ice-filled waters, and engage with our local friends and partners during the most meaningful and in-depth community experiences offered on any Quark Expeditions voyage. Guests will learn more about the history and culture of this region at the Kujataa UNESCO World Heritage Site, which is a living history lesson in Viking farming. We hope to offer you the opportunity to visit charming Qassiarsuk, a small sheep farming settlement across the fjord from Narsarsuaq, where you can experience true South Greenland hospitality and gain insight into the fascinating lives of sheep farmers living at the edge of the Ice Sheet. We suggest you take time to explore the remains and replicas of Brattahlíð, Erik the Red's estate, once the epicenter of the Greenland Norse Eastern Settlement.

Cruising

ARCTIC PATAGONIA

Days 6 to 8

The stunning maze of fjords, sounds, islets, inlets and skerries (rocky islands) in and around Cape Farewell (Nunap Isua) at Greenland's most southern tip possesses its own particular magic. Transiting the 100-km long Prins Christian Sund (Ikerasassuaq)—one of the world's most scenic fjords—will be truly unforgettable. Guests can then look forward to dramatic mountain and seascapes with glaciers tumbling down to down to the sea, and stunning vistas around every corner. Inhabiting this domain are Southern Greenlanders living on the frontier, a people as unique as the landscape they call home. This is where the migrating hunting peoples from the east finally settled around the European trading posts. The few villages in this southern region have gained a level of fame thanks to the inhabitants who remain steadfastly faithful to their hunting and fishing heritage. We hope to visit Aappilattoq, perched on the shores of Prins Christian Sund (Ikerasassuaq), to introduce you to our friends and partners there. We hope to offer you the opportunity to listen to their stories, hear their music, taste their food, learn about their hunting traditions, and perhaps even join a friendly game of soccer as a player or spectator. If you are looking for the most iconic peaks of South Greenland, you'll be in your glory when we reach the Tasermiut Fjord in the heart of what's known as "Arctic Patagonia," where guests can sign up for overnight camping (with local hosts) along the 70-km fjord. Marvel at the impressive Sermeq glacier at its head with rivers of ice tumbling almost down to sea level, and the imposing peaks of Nalumasortoq and Ulamertorsuaq dominating the skyline, making for the most scenic backdrops to your hike or helicopter-enabled excursions.

Cruising

THE WILD EAST & JOURNEY BACK TO NUUK (NORTHBOUND)

Days 9 to 11

We set out for the wild fjords of the uninhabited east coast, one of which is Lindenow Fjord, also known by its Greenlandic name, Kangerlussuatsiaq. Thousands of years ago, groups of paleo-Inuit hunters and fishermen made their home in these isolated fjords, living off the land and surviving mostly on the resources the sea provided, before European explorers and the subsequent establishment of settlements prompted one of the biggest waves of migration in Greenland. Traces of these once proud peoples can still be found today against the backdrop of cascading glaciers and steep-walled mountains. These fjords are frequented by marine mammals. Rare sightings of polar bears are possible, as they drift down from the north on sea ice floes propelled by the East-Greenland current. Humpback whales are often sighted when entering fjords as the shallowing seas bring an upwelling of nutrients to the surface. While we keep our eyes peeled for wildlife, the magnificent alpine terrain invites us to explore by sea, land and air to immerse ourselves completely in the remote icescapes of the region. The wild east is ideal for heli landings and hiking, paddle excursions, Zodiac cruises and shore landings.

Nuuk, Greenland

DISEMBARKATION, EXPLORE NUUK, FLIGHT TO REYKJAVIK

Day 12

After breakfast, guests will be transferred from the pier to the town. You'll have time to wander the streets of the historic Old Nuuk neighborhood and see the Hans Egede Church and Hans Egede statue near the waterfront. You will also have an opportunity to visit the Greenland National Museum & Archives to view the collections and exhibitions and to better understand Greenland's cultural heritage, such as the significance of the kayak, which is Greenland's national symbol and can be traced back over 4,000 years. There will also be an opportunity to visit the famous 500-year-old Greenlandic mummies. After a half-day of exploring Nuuk, guests will meet at a designated spot in town for the transfer to the airport for their charter flight to Reykjavik.

Reykjavík, Iceland

DEPART REYKJAVIK

Day 13

After a restful night at your included hotel, make your way to Keflavik international for your onward flight, or continue your independent explorations of Reykjavik at your leisure.

Im Preis inbegriffen

- Führung während der gesamten Reise durch unsere erfahrenen Expeditionsleiter, einschließlich Landgänge und andere Aktivitäten
- Alle Zodiac-Transfers und Fahrten gemäß dem Tagesprogramm
- Alle Landgänge gemäß dem Tagesprogramm
- Unterkunft an Bord mit täglichem Housekeeping
- Alle Mahlzeiten, Snacks, alkoholfreie Getränke und Säfte an Bord während der gesamten Reise (Bitte informieren Sie uns so weit wie möglich im Voraus über eventuelle Diätwünsche. Die Schiffsküche kann leider keine koscheren Mahlzeiten zubereiten).
- Bier, Standardweine und -spirituosen sowie Cocktails während der Barservicezeiten und beim Abendessen; sowie Kaffee, Tee und Kakao rund um die Uhr verfügbar
- Jeder Gast kann sich mit jeweils einem Gerät beim Wi-Fi-Service des Schiffes anmelden. Dieser ergänzende Wi-Fi-Dienst ermöglicht grundlegendes Surfen im Internet, vorbehaltlich Satellitenempfang
- Formelle und informelle Präsentationen durch unser Expeditionsteam und Gastredner nach Plan
- Ein Fototagebuch zur Dokumentation der Expedition
- Ein Paar wasserdichte Expeditionsstiefel für Anlandungen und Zodiacfahrten (leihweise)
- Ein spezieller Parka von Quark Expeditions®, den Sie behalten können
- Haartrockner und Bademäntel in jeder Kabine
- Alle sonstigen Service-Steuern und Hafengebühren während des Programms
- Sämtliches Gepäckhandling an Bord des Schiffes
- Notfall-Evakuierungsversicherung für alle Passagiere bis zu einer maximalen Leistung von USD \$500.000 pro Person
- Grönland-Reisen Kreuzfahrt-Passagiersteuer

Nicht im Preis inbegriffen

- Obligatorisches Transferpaket
- Internationale Flugkosten
- Transfers bei Ankunft und Abreise, außer wenn im obligatorischen Transferpaket aufgeführt
- Reisepass- und Visakosten
- Staatliche Ankunfts- und Abflugsteuern, die nicht oben aufgeführt sind
- Mahlzeiten an Land, sofern nicht anders angegeben
- Reisegepäck-, Reiserücktritts-, Reiseabbruch- und Reisekrankenversicherung – dringend empfohlen
- Übergepäckgebühren bei internationalen Flügen
- Obligatorische wasserdichte Hosen für Zodiacfahrten oder andere nicht erwähnte Ausrüstung
- Wäsche-, Bar- und andere persönliche Kosten, sofern nicht angegeben
- Telefon- und Internetgebühren
- Freiwillige Trinkgelder am Ende der Reise für das Bordpersonal und die Crew
- Zusätzliche Übernachtungsmöglichkeiten
- Aktivitäten, die nicht in den Inklusivleistungen aufgeführt sind

Ihr Schiff

Ihr Schiff ist die "Ultramarine". Ausführlich stellen wir Ihnen dieses Schiff auf unseren Schiffseiten vor. [Ausführliche Informationen zu diesem Schiff.](#)

Passagiere
199

Bordsprachen


Eisklasse
PC-6

Special
Helikopter

