

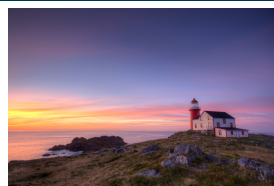
IHRE REISE

*Die Route der Wikinger: Von
Grönland nach Neufundland*

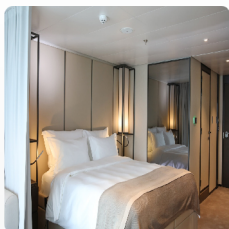
Reisetermin
29.08.2026 - 13.09.2026

Reisedauer
16 Tage

Reederei / Schiff
Scenic Eclipse / SCENIC Luxury Cruises & Tours



Scenic Eclipse Veranda Suite C, Deck 6



Doppelbelegung


€17.395
 pro Person

Einzelbelegung


€33.995
 pro Person

Scenic Eclipse Veranda Suite D, Deck 5



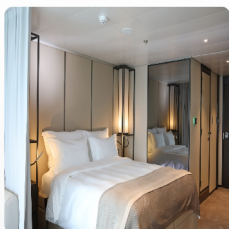
Doppelbelegung


€17.395
 pro Person

Einzelbelegung


€33.995
 pro Person

Scenic Eclipse Veranda Suite A, Deck 8



Doppelbelegung


€20.195
 pro Person

Einzelbelegung


€39.595
 pro Person

Scenic Eclipse Deluxe Veranda Suite CA, Deck 6



Doppelbelegung


€20.265
 pro Person

Einzelbelegung


€39.735
 pro Person

Scenic Eclipse Deluxe Veranda Suite DB, Deck 5



Doppelbelegung


€20.265
 pro Person

Einzelbelegung


€39.735
 pro Person

Scenic Eclipse Deluxe Veranda Suite DA, Deck 5



Doppelbelegung


€20.265
 pro Person

Einzelbelegung


€39.735
 pro Person

Scenic Eclipse Deluxe Veranda Suite AA, Deck 7



Doppelbelegung


€21.175
 pro Person

Einzelbelegung


€41.555
 pro Person

Scenic Eclipse Deluxe Veranda Suite BA, Deck 7



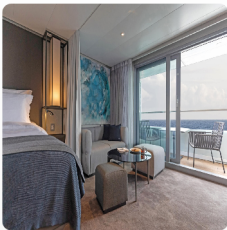
Doppelbelegung


€21.175
 pro Person

Einzelbelegung


€41.555
 pro Person

Scenic Eclipse Grand Deluxe Veranda Suite CD, Deck 6



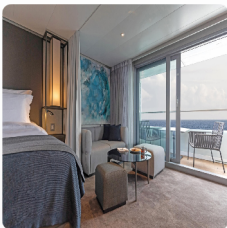
Doppelbelegung


€21.455
 pro Person

Einzelbelegung


€42.115
 pro Person

Scenic Eclipse Grand Deluxe Veranda Suite DD, Deck 5



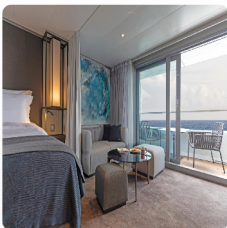
Doppelbelegung


€21.455
 pro Person

Einzelbelegung


€42.115
 pro Person

Scenic Eclipse Grand Deluxe Veranda Suite AD, Deck 8



Doppelbelegung


€22.015
 pro Person

Einzelbelegung


€43.235
 pro Person

Scenic Eclipse Grand Deluxe Veranda Suite BD, Deck 7



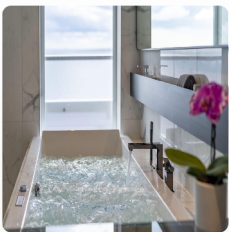
Doppelbelegung


€22.015
 pro Person

Einzelbelegung


€43.235
 pro Person

Scenic Eclipse Spa Suite S, Deck 8



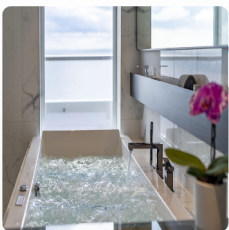
Doppelbelegung


€26.495
 pro Person

Einzelbelegung


€52.195
 pro Person

Scenic Eclipse Spa Suite SB, Deck 9



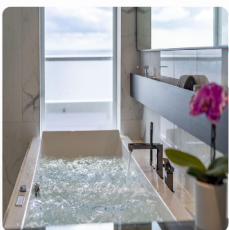
Doppelbelegung


€26.775
 pro Person

Einzelbelegung


€52.755
 pro Person

Scenic Eclipse Spa Suite SA, Deck 9



Doppelbelegung


€26.775
 pro Person

Einzelbelegung


€52.755
 pro Person

Scenic Eclipse Panorama Suite P, Deck 8



Doppelbelegung


€42.665
 pro Person

Einzelbelegung


€84.535
 pro Person

Scenic Eclipse Grand Panorama Suite GP, Deck 6



Doppelbelegung


€45.955
 pro Person

Einzelbelegung


€91.115
 pro Person

Scenic Eclipse Owners Penthouse Suite OP, Deck 9



Doppelbelegung


€51.065
 pro Person

Einzelbelegung


€101.335
 pro Person

Scenic Eclipse Veranda Suite B, Deck 7



Doppelbelegung


 Nicht verfügbar

Einzelbelegung


 Nicht verfügbar

Scenic Eclipse Two-Bedroom Penthouse Suite TP, Deck 9



Doppelbelegung



Nicht verfügbar

Einzelbelegung



Nicht verfügbar



Copenhagen

Tag 1

Your journey begins with an overnight stay in Denmark's vibrant capital, a city that epitomises Scandinavian cool. Copenhagen is full of exceptional architecture, art, history and food.

You'll be greeted at the airport and escorted to your luxury accommodation. Take a moment to soak in the anticipation of the experiences ahead amidst the captivating charm of Copenhagen before setting sail on a remarkable journey.

Copenhagen > Kangerlussuaq

After breakfast in your hotel, board your flight from Copenhagen to Kangerlussuaq, Greenland, where your 6-star Discovery Yacht awaits.

Tag 2

The Captain and crew of Scenic Eclipse will welcome you on board with a glass of Champagne as you familiarise yourself with your new home. With only up to 228 guests on board, you'll experience an immersive, engaging cruise through this fascinating part of the world.

Meet Scenic Eclipse's world-class crew, including the Discovery Team comprised of expert naturalists, marine biologists, and historians, who will enrich your voyage with their passion and knowledge. Settle into your luxurious suite, then join your fellow guests on the Sky Deck to toast the start of an unforgettable voyage.

At Sea

Tag 3

After a restorative night of rest in your ultra-luxury suite, wake on your own time. The day is yours to spend exactly as you wish, so take some time to explore the ship and familiarise yourself with all the areas on board your new ultra-luxury home. Visit the Sky Bar and outdoor Vitality Pool on Deck 10. Step into the tranquil Senses Spa# on Deck 6 with its steam rooms, saunas, plunge pool and heated therapy lounge.

Then join the Discovery Team in the state-of-the-art theatre for an introductory lecture where they'll share their insights about your upcoming ports.

Ilulissat & Disko Bay

Tag 4

Spectacular days await as you cruise Disko Bay. Ilulissat is the main town on the bay, named from the Inuit word for 'iceberg'. It's famous for the large number of icebergs breaking away from the nearby Ilulissat Icefjord, a World Heritage-listed site. The Icefjord is the mouth of the vast Sermeq Kujalleq Glacier, one of the world's fastest moving and most active glaciers, calving a remarkable 46 cubic kilometres of ice annually. Listen for the rumbling sounds in the distance as huge chunks of ice break from the glacier and tumble into the water below.

Eqip Sermia Glacier

Tag 5

Expect more thundering ice today as you sail close to the Eqip Sermia Glacier, one of Greenland's most active glaciers. Scenic Eclipse will be able to get close to the sheer front of the glacier, so you can hear and feel the huge blocks of ice calving into the water. The expert Discovery Team will be on hand to guide you through the glacier's activity, showcasing its awe-inspiring beauty and fascinating history. Witness the breathtaking sight of towering ice walls and shimmering blue hues nestled amidst Greenland's pristine landscapes.

Sisimiut

Tag 6

Sitting around 40 kilometres north of the Arctic Circle, Sisimiut is the second-largest town in Greenland. With colourful houses sprinkled around a picturesque bay, the town is bathed in perpetual sunlight during the summer months. Explore Sisimiut's rich history, dating back some 4,500 years, at the local museum, which has a collection of ancient Saqqaq artifacts. You'll have the opportunity to purchase souvenirs crafted from qiviut, the inner wool of a muskox, such as scarves, hats, or mittens. Immerse yourself in authentic interactions with local communities, adding depth and authenticity to your Arctic experience.

Evighed Fjord

Tag 7

Enjoy a slow day cruising through Evighed Fjord, or 'Eternity Fjord', considered one of the most beautiful in Greenland. Stretching for more than 75 kilometres, you'll be awed by the endless fields of ice glittering under the sun. Tall, jagged peaks threaded with glaciers rise straight up out of the calm blue waters. Many of the glaciers are very active and you will likely hear chunks of ice calving away and collapsing loudly into the ocean. In Evighed Fjord, you'll feel the beauty and power of nature all around you.

At Sea

Tag 8

Freshly squeezed juice, steaming barista-made coffee or tea delivered to your door by the butler will help you start your day. After a busy start to your Arctic journey, some relaxation could be on the menu today. Curl up with a book or your binoculars on the hanging chairs on Deck 7, join a Pilates class or guided stretching session in the PURE studio, or enjoy a long lunch with new friends at Azure Bar & Cafe.

As Scenic Eclipse sails through the Davis Strait, linking Baffin Bay with the Labrador Sea, marvel at its rich marine life and hear the Discovery Team talk about its historical significance.

At Sea

Tag 9

For relaxation and wellbeing at sea, the indulgent Senses Spa awaits on Deck 6. Inside this luxurious retreat you can be pampered with a range of holistic ESPA treatments* including massages, facials, manicures and pedicures. A range of alternative therapies are on offer, like Japanese shiatsu and Indian Ayurvedic massage. Afterwards, hold on to that feeling of calm for a while longer in the Zen-like space of the Vitality Lounge.

You'll also find Nordic bathing experiences, infra-red saunas, chromo-therapy pressure showers, and separate steam rooms and relaxation lounges for men and women.

L'Anse aux Meadows

Tag 10

Sitting at the northern tip of the island of Newfoundland, L'Anse aux Meadows is the site of the first recorded European contact with North America. It's a true milestone in the history of human migration and discovery. Now a World Heritage Site, it marks the sole Viking-established settlement on the continent, dating back to the 11th century. The archaeological remnants, including remnants of wood-framed peat-turf buildings, mirror those found in Norse Greenland Iceland. Exploring the site, you'll embark on a fascinating journey tracing the footsteps of Vikings who arrived in North America centuries before Columbus.

Woody Point

Tag 11

Scenic Eclipse will continue sailing down the west coast of Newfoundland, bound for Bonne Bay and Woody Point. These small towns are nestled within Gros Morne National Park, a World Heritage-listed site that was formed over 485 million years. This sprawling and beautiful park is made up of strikingly diverse landscapes, from moody mountains and deep fjords to barren tablelands and deserted beaches. On the water, the cove is divided into Inner and Outer Bonne Bay. Inner Bonne Bay boasts serene wooded coves and sandy beaches, while Outer Bonne Bay serves as the gateway to the majestic Bonne Bay fjord.

Louisbourg

Tag 12

Step into a piece of living history when you go ashore at Louisbourg on Cape Breton Island. This well-preserved 18th century fortress will immerse you in French colonial life amidst charming cobblestone streets and historic buildings. It's the largest historical reconstruction in North America and authentic fortifications, kitchen gardens and homes sit alongside the original ruins. Uncover the secrets of this World Heritage-listed site as you wander through its picturesque streets and soak in the unique atmosphere.

Halifax

Tag 13

Halifax, Nova Scotia's dynamic capital, has long been tied to the sea. It has one of the largest and deepest ice-free harbours in the world, and has been an important military and commercial port for more than 250 years. Today, you can learn about its rich cultural heritage through the city's many museums and historical sites. Wander through bustling downtown streets and picturesque waterfronts, savouring maritime delights and charming cafes. A late departure gives you time to sample the city's famed live music scene, which takes over historic pubs and cosy venues every night of the week.

Lunenburg

Tag 14

Lunenburg is one of Canada's most beautiful towns, a World Heritage-listed site where 70 per cent of the original buildings from the 18th and 19th centuries still stand. It is the best surviving example of a British colonial settlement in North America, set out along an orderly grid pattern. You'll be charmed by its picturesque colourful houses and architectural wonders like the Lunenburg Academy, the pink Wedding Cake House, and St. John's Anglican Church. The historic waterfront is now home to a lively mix of restaurants, breweries, distilleries and boutiques, all of which embrace the town's proud seafaring legacy.

Portland, Maine

Tag 15

Crossing into the United States, welcome to the land of lighthouses and lobsters. This bustling, modern city has a long maritime history and miles of pristine beaches. Discover Victorian architecture, craft breweries, a thriving arts scene and world-class cuisine, then explore the outdoor experiences that await just outside of the city. Explore the city highlights with a visit to historic Portland Head Light and the charming seaside town of Kennebunkport or discover the lighthouses of the South Portland Greenbelt Pathway by bicycle on a guided tour.

Boston

Tag 16

Your journey concludes this morning in Boston. The capital of the state of Massachusetts, Boston is one of the oldest cities in America and the cradle of the American Revolution.

After a final delicious breakfast, farewell the crew and new friends who shared this incredible voyage with you. You'll be transferred to the airport for your onward journey or return flight home, taking with you memories that will last a lifetime.

Please book your flight to depart out of Boston after 12:00 PM.

+All drinks on board, including those stocked in your mini bar, are included, except for a very small number of rare, fine and vintage wines, Champagnes and spirits. #Spa treatments at additional cost. ~Kayaking may not operate in all locations.

Please note the itinerary is a guide and may be subject to changes for operational reasons. Please refer to our terms and conditions for further information.

Im Preis inbegriffen

- Services und Annehmlichkeiten an Bord
- Maximal 229 Gäste an Bord(200 in den Polarregionen)
- Großzügige Suiten mit privater Veranda2:1-Verhältnis
- Gäste- und Butlerservice für jeden Gast
- Zehn kulinarische Erlebnisse in neun Gourmet-Menues – von gemütlicher Atmosphäre bis zum eleganten Fine Dining
- Auswahl an Premium-Markengetränken mit über 101 Whiskysorten
- Scenic Discovery Ausflüge mit dem Zodiac
- Komplettes Kajakprogramm und Stand-up-Paddle-Boarding
- Kostenloser Expeditionsparaka und Wasserflasche sowie die Nutzung von speziellen Polarstiefeln
- Interessantes Vortrags- und Bildungsprogramm mit Experten an Bord
- Spezielle Observation Lounge und Terrasse für die beste Aussicht
- Swarovski-Teleskope an Deck sowie Ferngläser in der Suite, damit Sie keinen aufregenden Momente verpassen
- Senses Spa**auf 551 m2 mit Fitnesscenter, Yoga- und Pilatesstudio
- Außen-Vitalpools nachskandinavischem Vorbild
- Modernes Theater mittäglichem Unterhaltungs- und Bildungsangebot
- WLAN inclusive
- Inlandsflüge inkl. Gebühren
- Flughafentransfers
- Trinkgelder an Bord und an Land

Nicht im Preis inbegriffen

- Internationale Flüge, sofern nicht angegeben
- Reiseversicherungen
- Visa- oder Passgebühren (falls erforderlich)
- persönliche Ausgaben (Einkäufe, optionale Ausflüge)
- sonstige im Programm nicht genannte Leistungen

Ihr Schiff

Ihr Schiff ist die "Scenic Eclipse". Ausführlich stellen wir Ihnen dieses Schiff auf unseren Schiffseiten vor. [Ausführliche Informationen zu diesem Schiff.](#)

Passagiere
199

Bordsprachen


Eisklasse
PC-6

Special
Helikopter

