

IHRE REISE

# Nordwest-Passage - Epische Hohe Arktis

<p>Reisetermin</p> <p><b>21.08.2026 - 06.09.2026</b></p>	<p>Reisedauer</p> <p><b>17 Tage</b></p>	<p>Reederei / Schiff</p> <p><b>Ocean Explorer / Quark Expeditions</b></p>
--	---	---



**Deluxe Veranda Forward Kabine**




Doppelbelegung



**€20.146**

pro Person

Einzelbelegung



**€32.917**

pro Person

**Veranda Kabine**



Doppelbelegung



**€21.115**

pro Person

Einzelbelegung



**€34.565**

pro Person

**Veranda Suite**



Doppelbelegung



**€22.245**

pro Person

Einzelbelegung



**€36.487**

pro Person

Junior Suite



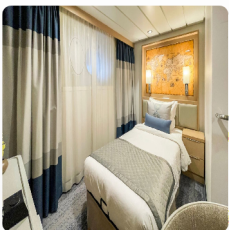
Doppelbelegung

  
**€25.879**  
 pro Person

Einzelbelegung

  
**€49.857**  
 pro Person

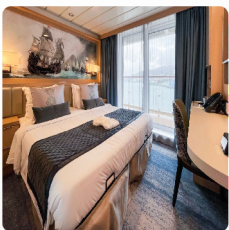
Studio Single



Einzelbelegung

  
**€25.879**  
 pro Person

Penthouse Suite



Doppelbelegung

  
**€29.755**  
 pro Person

Einzelbelegung

  
**€57.609**  
 pro Person

Owners Suite



Doppelbelegung

  
**€31.612**  
 pro Person

Einzelbelegung

  
**€61.323**  
 pro Person

Studio Veranda Single



*Einzelbelegung*



Nicht verfügbar



## Calgary, Canada

### ARRIVE IN CALGARY, CANADA

Day 1

Your Arctic expedition begins in Calgary. Explore this vibrant city on your own before spending the night at your well-appointed hotel.

## Resolute, Canada

### FLY TO RESOLUTE AND EMBARK

Day 2

This morning, board your charter flight to Resolute. Upon arrival, you'll have a chance to walk around this small Arctic town before enjoying your first of many Zodiac cruises as you're transferred to your ship.

## Cruising

### EXPLORING CANADA'S HIGH ARCTIC

Days 3 to 6

Cruising around the remote regions of the Canadian Arctic aboard Ocean Explorer, the newest ship in our fleet, you'll navigate the same icy inlets, channels and bays that fascinated legendary explorers of long ago. Throughout your journey, your Expedition Team will keep an eye toward immersing you in the best the Arctic has to offer at the top of the world. Named after explorer Frederick William Beechey, of the Royal Navy, Beechey Island is a Canadian National Historic Site. It's an important stop on our voyage, as this is the final resting place of three members of Sir John Franklin's ill-fated 1845–46 expedition to find the Northwest Passage. The graves, on a remote windswept raised beach, were discovered in 1851 by the crew of British and American vessels searching for signs of Franklin's lost expedition. Radstock Bay is a popular research location for observing polar bears, which are often seen here in summer. An impressive Thule archaeological site provides insight into how these pre-Inuit people lived in the Far North. For almost 5,000 years, the hamlet of Arctic Bay and its surrounding area has been occupied by Inuit people who were previously nomads migrating from the west. Surrounded by soaring cliffs teeming with seabirds, this is a great spot to go ashore and learn about the Inuit community's traditional way of life. The eastern end of Lancaster Sound affords hiking and cruising opportunities on Devon Island. At Dundas Harbour, trek along a beach to a former Royal Canadian Mounted Police outpost. We'll anchor at Croker Bay, where we'll cruise near enough to appreciate the splendor of glacial textures and calving ice, while always keeping a safe distance. Walrus frequent the waters here, so be sure to have your camera handy. Canada's most northern settlement, Grise Fiord will be your final shore visit in the Canadian High Arctic. Now home to about 150 residents, the mostly Inuit community was created in 1953, when the federal government forcefully relocated eight Inuit families from northern Quebec. Hunting and fishing are a significant part of their way of life. Visit the monument to the first Inuit settlers, as well as the remnants of the "old camp" where they lived.

## Cruising

### EXPLORING SMITH SOUND

Days 7 and 8

Before saying goodbye to Canada, we'll try to cruise as far north as possible, exploring both sides of Smith Sound, the uninhabited passage between Ellesmere Island and Greenland.

## Cruising

### QAANAQ, GREENLAND

Day 9

Your first stop in Greenland is Qaanaaq, formerly known as Thule, one of the northernmost towns in the world. Here, local Inuit share their culture and traditions, and the museum sheds more light on what it's like living near the top of the world.

## Cruising

### CRUISING

Day 10

As we sail south along the west coast of Greenland, presentations by our on-board experts will prepare you for the adventures that lie ahead.

## Cruising

### EXPLORING WEST GREENLAND

Days 11 to 15

With spectacular glaciers, soaring fjords and vibrant communities, the west coast of Greenland will leave you breathless. Nuussuaq (formerly known as Kraulshavn) is the only mainland community in the Upernavik Archipelago. Founded in 1923 as a trading station, it's one of the most traditional hunting and fishing villages in Greenland. Each community visit in Greenland is a unique experience and Uummannaq might just steal your heart. It's not surprising that the red-hued, heart-shaped mountain that rises up behind gave this traditional village its name (Uummannaq means "heart-like" in Greenlandic). As your ship approaches the shore, you'll want to be on deck to take in the incredible view of the twin peaks towering over the vibrantly painted wooden houses dotting the rocky terrain below. The settlement was established as a Danish colony in 1758 on the mainland, but it relocated five years later because seal hunting was more plentiful here. In the nearby archaeological site of Qilakitsoq (also written as Qilakitsoq), you'll visit the ruins of an ancient settlement, where the remains of eight fully dressed mummies were discovered under a rock outcrop in 1972 by a pair of hunters. The famous Greenlandic mummies, which date back to 1475 A.D., are on view at the Greenland National Museum in Nuuk. Cruising farther south rewards with spectacular views of Eqip Sermia. The jagged, blue-tinged glacier soaring out of the icy waters is one of the most beautiful sights in Greenland, and we hope to Zodiac cruise along its massive front from a safe distance. We may also go ashore to explore nearby. Just south of Ilulissat, which means "iceberg" in Greenlandic, is the impressive Ilulissat Icefjord. The UNESCO World Heritage Site is home to Sermeq Kujalleq, the most productive glacier in the northern hemisphere. As we Zodiac cruise at the mouth of the fjord, you may be lucky to witness the wonders of calving ice (listen to the loud roars as the ice breaks off). Founded in 1741, the traditional town, which boasts more sled dogs than people, is famous in its own right: it was the birthplace of explorer and anthropologist Knud Rasmussen, the first to traverse the Northwest Passage by dogsled, in the early 1920s. Hikes here lead out to stunning views of the young icebergs as they float out the fjord to Disko Bay. In Sisimiut, you'll be treated to a traditional kayaking demonstration. The kayak (an Inuit word that the English borrowed) has become a national symbol of Greenland and has been used by Inuit hunters for thousands of years. The town has several 18th-century colonial buildings, including the oldest surviving church in Greenland, so take time to wander through the historic area. Surrounded by sea and mountains, Itilleq is situated about a mile (2 km) above the Arctic Circle, in a scenic hollow on a small island. It is the southern limit of the Greenlandic sled dog. To keep the breed pure, the dogs are not permitted south of this community and all other dog breeds are prohibited this far north. It's also known as a welcoming community, where you might experience "kaffemik," a Greenlandic tradition of inviting visitors in for coffee, cakes and conversation. Explore the town's charming wooden houses painted in a rainbow of colors, chat with the locals, whose main trade is fishing, and maybe challenge them to a game of football (soccer) —it won't be long before you're experiencing Itilleq's famous friendly vibe.

## Kangerlussuaq, Greenland

### DISEMBARK IN KANGERLUSSUAQ AND FLY TO REYKJAVIK

Day 16

Enjoy one more Zodiac ride to shore, where you'll board your charter flight back to Reykjavik, Iceland. Upon arrival in Reykjavik, you will be transferred to your included hotel.

## Reykjavík, Iceland

### DEPART REYKJAVIK, ICELAND

Day 17

Today, you can make your way home at your leisure or spend some time exploring this fascinating city.

#### **Im Preis inbegriffen**

- Führung während der gesamten Reise durch unsere erfahrenen Expeditionsleiter, einschließlich Landgängen und anderen Aktivitäten
  - Alle Zodiac-Transfers und Fahrten gemäß dem Tagesprogramm
  - Alle Landgänge gemäß dem Tagesprogramm
  - Unterkunft an Bord mit täglichem Housekeeping
  - Alle Mahlzeiten, Snacks, alkoholfreie Getränke und Säfte an Bord während der gesamten Reise (Bitte informieren Sie uns so weit wie möglich im Voraus über eventuelle Diätwünsche. Die Schiffsküche kann leider keine koscheren Mahlzeiten zubereiten).
  - Bier, Standardweine und -spirituosen sowie Cocktails während der Barservicezeiten und beim Abendessen; sowie Kaffee, Tee und Kakao rund um die Uhr verfügbar
  - Jeder Gast kann sich mit jeweils einem Gerät beim Wi-Fi-Service des Schiffes anmelden. Dieser ergänzende Wi-Fi-Dienst ermöglicht grundlegendes Surfen im Internet, vorbehaltlich Satellitenempfang
  - Formelle und informelle Präsentationen durch unser Expeditionsteam und Gastredner nach Plan
  - Ein Fototagebuch zur Dokumentation der Expedition
  - Ein Paar wasserdichte Expeditionsstiefel als Leihgabe für Anlandungen und Zodiacfahrten.
  - Ein offizieller Parka von Quark Expeditions zum Mitnehmen
  - Haartrockner und Bademäntel in jeder Kabine
  - Alle sonstigen Service-Steuern und Hafengebühren während des Programms
  - Sämtliches Gepäckhandling an Bord des Schiffes
  - Notfall-Evakuierungsversicherung für alle Passagiere bis zu einer maximalen Leistung von USD \$500.000 pro Person
  - Grönland-Reisen Kreuzfahrt-Passagiersteuer
-

**Nicht im Preis inbegriffen**

- Obligatorisches Transferpaket
- Internationale Flugkosten
- Transfers bei Ankunft und Abreise, außer wenn im obligatorischen Transferpaket aufgeführt
- Kosten für Reisepass und Visum
- Kanadisches eTA für nicht-kanadische oder US-Visum-befreite Passagiere erforderlich
- Staatliche Ankunfts- und Abreisesteuern, die nicht oben aufgeführt sind
- Mahlzeiten an Land, sofern nicht anders angegeben
- Reisegepäck-, Reiserücktritts-, Reiseabbruch- und Reisekrankenversicherung – dringend empfohlen
- Übergepäckgebühren auf internationalen Flügen
- Obligatorische wasserdichte Hosen für Zodiac-Fahrten oder andere nicht erwähnte Ausrüstung
- Wäsche-, Bar- und andere persönliche Kosten, sofern nicht angegeben
- Telefon- und Internetgebühren
- Freiwilliges Trinkgeld am Ende der Reise für das Schiffspersonal und die Crew
- Zusätzliche Übernachtungsmöglichkeiten
- Abenteueroptionen, die nicht in den inkludierten Aktivitäten aufgeführt sind



*Ihr Schiff*

*Ihr Schiff ist die "Ocean Explorer". Ausführlich stellen wir Ihnen dieses Schiff auf unseren Schiffseiten vor. [Ausführliche Informationen zu diesem Schiff.](#)*

Passagiere  
**138**

Bordsprachen  


Eisklasse  
**PC-6**

Special  
**X-Bow**

