

IHRE REISE

*Antarctica Bridge - Direktflug  
 (King George Island) zum letzten  
 Kontinent*

Reisetermin  
 27.01.2025 - 02.02.2025

Reisedauer  
 7 Tage

Reederei / Schiff  
 Silver Cloud / Silversea



Vista Suite



Doppelbelegung



**€21.900**

pro Person

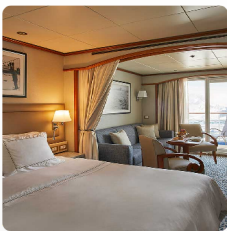
Einzelbelegung



**€32.850**

pro Person

Veranda Suite



Doppelbelegung



**€23.900**

pro Person

Einzelbelegung



**€35.850**

pro Person

**Deluxe Veranda Suite**



*Doppelbelegung*



**€ 26.900**

pro Person

*Einzelbelegung*



**€ 40.350**

pro Person

**Medallion Suite**



*Doppelbelegung*



**€ 28.500**

pro Person

*Einzelbelegung*



**€ 57.000**

pro Person

**Silver Suite**



*Doppelbelegung*



**€ 36.500**

pro Person

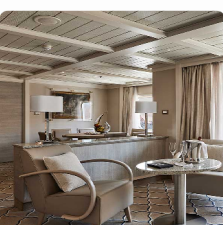
*Einzelbelegung*




**€ 73.000**

pro Person

**Owner's Suite**




*Doppelbelegung*



Nicht verfügbar

*Einzelbelegung*



Nicht verfügbar

Grand Suite



*Doppelbelegung*



Nicht verfügbar

*Einzelbelegung*



Nicht verfügbar

Royal Suite



*Doppelbelegung*



Nicht verfügbar

*Einzelbelegung*



Nicht verfügbar



King George Island  
 Mo., 27. Jänner  
 Abfahrt 18:00

Tag 1

As the largest of all the South Shetland Island, King George is considered the gateway to Antarctica. At just 120 kilometres from the Antarctic Peninsula and the only airport in the South Shetlands, it is the connection between “real life” and “Antarctic life”. More than 10 different nations have year-round or summer-only scientific research stations on the island (considering that 90% of the island is covered by snow and ice, that is quite an achievement!). Maintaining a base on the island allows membership of the Antarctic Treaty. There is even a Russian Orthodox church, with a permanent on-site priest. The island might be home to a few international scientists, but they are very much outnumbered by the diverse wildlife that considers King George Island rightfully theirs. Adelie, Chinstrap and Gentoo Penguins all commute to and from the Antarctic peninsula from the island, while Weddell and leopard seals are regular visitors and can be spotted either in the water or on the shore. Naturally, this brings a huge amount of birdlife: skuas and southern giant petrels are regular summer residents, attracted by the warm climate (warm being a relative term, average temperature is between 1.5 and -6.5°C). The island was named after King George III after British explorer discovered it in 1819. Since then the island has been claimed by both Chile (1940) and Argentina (1943), but remains part of British Antarctic Territory.

Antarctic Sound  
Di., 28. Jänner  
Abfahrt 18:00

Tag 2

Few voyages ignite the imagination like a journey down to one of the planet's most remote extreme and enchanting wilderness Antarctica. An adventure in its purest form only a handful of people will ever be lucky enough to experience the majestic beauty of these monochrome landscapes first-hand. The Antarctic Sound will be one of your first encounters of this whitewash kingdom located at the northerly tip of the Antarctic Peninsula - which sprawls up like a tentacle towards Tierra del Fuego, South America's most southerly point, otherwise known as the 'End of the World'. Taking its name from the first ship to brave the passageway between the peninsula and the Joinville Island groups back in 1902, the Sound is a raw sensory assault of imposing iceberg slabs broken away from the disintegrating Larsen Ice Shelf. Come face-to-face with stadium-sized islands of ice and meet the extraordinary birdlife that call this whitewash kingdom home. Watch on as colonies of Gentoo penguins hop around and cape petrels sweep overhead as the continent's unique wildlife thrives around you. If you're planning your first venture into Antarctica you'll want to brush up on your photography skills in advance to capture this unforgiving continent in all of its unrestrained glory.

Antarctic Peninsula  
Mi., 29. Jänner  
Abfahrt 18:00

Tag 3

The Antarctic Peninsula unravels upwards towards South America reaching out a beckoning finger to the adventurous who dare to explore this untamed realm. Stretching up from the heart of the world's southernmost continent the Antarctic Peninsula lies a mere 620 mile from Tierra del Fuego and for many offers a spectacular first taste of the snow-blanketed landscapes and colossal ice sculptures which make up Earth's least-explored continent. Unseen by humans until 1820 - a blink of an eye ago in relative terms - this is an adventure sure to make your hairs stand on end as you experience the thrill of the truly unknown and extraordinary. The vast peninsula is sprinkled with research bases which are at the frontline of human scientific endeavour pushing to study and understand this unique landscape, its exceptional wildlife and the impact that humans are having on this pristine continent. Witness cathedral-sized icebergs up close and blue-hued glaciers slowly slipping from imposing locations.

Antarctic Peninsula  
Do., 30. Jänner  
Abfahrt 18:00

Tag 4

The Antarctic Peninsula unravels upwards towards South America reaching out a beckoning finger to the adventurous who dare to explore this untamed realm. Stretching up from the heart of the world's southernmost continent the Antarctic Peninsula lies a mere 620 mile from Tierra del Fuego and for many offers a spectacular first taste of the snow-blanketed landscapes and colossal ice sculptures which make up Earth's least-explored continent. Unseen by humans until 1820 - a blink of an eye ago in relative terms - this is an adventure sure to make your hairs stand on end as you experience the thrill of the truly unknown and extraordinary. The vast peninsula is sprinkled with research bases which are at the frontline of human scientific endeavour pushing to study and understand this unique landscape, its exceptional wildlife and the impact that humans are having on this pristine continent. Witness cathedral-sized icebergs up close and blue-hued glaciers slowly slipping from imposing locations.

Antarctic Peninsula  
Fr., 31. Jänner  
Abfahrt 18:00

Tag 5

The Antarctic Peninsula unravels upwards towards South America reaching out a beckoning finger to the adventurous who dare to explore this untamed realm. Stretching up from the heart of the world's southernmost continent the Antarctic Peninsula lies a mere 620 mile from Tierra del Fuego and for many offers a spectacular first taste of the snow-blanketed landscapes and colossal ice sculptures which make up Earth's least-explored continent. Unseen by humans until 1820 - a blink of an eye ago in relative terms - this is an adventure sure to make your hairs stand on end as you experience the thrill of the truly unknown and extraordinary. The vast peninsula is sprinkled with research bases which are at the frontline of human scientific endeavour pushing to study and understand this unique landscape, its exceptional wildlife and the impact that humans are having on this pristine continent. Witness cathedral-sized icebergs up close and blue-hued glaciers slowly slipping from imposing locations.

South Shetland Islands  
Sa., 1. Februar  
Abfahrt 18:00

Tag 6

The ice-coated Antarctic Peninsula forms perhaps the most accessible region of mainland Antarctica lying a mere 480-miles away from South America across the fabled waters of Drakes Passage. Lying close to the northwestern tip of the Antarctic Peninsula separated by the Bransfield Strait, the South Shetland Islands fall under the jurisdiction of the Antarctic Treaty, suspending claims on their sovereignty. Several countries maintain research bases here and with plump elephant seals and crowds of Gentoo, Chinstrap, and Adelie Penguins also calling the islands home it can even feel a little crowded at times. King George Island is the largest and most hospitable island hosting the majority of the research stations - some of which are populated all-year-round by tiny hardy crews. Don't be fooled though these islands offer extraordinary adventure in one of the most remote locations on earth. The triple peaks of Mount Foster tower above the archipelago. Hike the lunar landscapes within and even dip into the improbably warm geothermally-heated waters of Pendulum Cove. Elephant Island meanwhile is written deep into the annals of Antarctic expedition legend as the site where Ernest Shackleton and the stricken crew of the Endurance miraculously survived a harsh Antarctic winter in 1916.

King George Island  
So., 2. Februar  
Ankunft 05:30

Tag 7

As the largest of all the South Shetland Islands, King George is considered the gateway to Antarctica. At just 120 kilometres from the Antarctic Peninsula and the only airport in the South Shetlands, it is the connection between "real life" and "Antarctic life". More than 10 different nations have year-round or summer-only scientific research stations on the island (considering that 90% of the island is covered by snow and ice, that is quite an achievement!). Maintaining a base on the island allows membership of the Antarctic Treaty. There is even a Russian Orthodox church, with a permanent on-site priest. The island might be home to a few international scientists, but they are very much outnumbered by the diverse wildlife that considers King George Island rightfully theirs. Adelie, Chinstrap and Gentoo Penguins all commute to and from the Antarctic peninsula from the island, while Weddell and leopard seals are regular visitors and can be spotted either in the water or on the shore. Naturally, this brings a huge amount of birdlife: skuas and southern giant petrels are regular summer residents, attracted by the warm climate (warm being a relative term, average temperature is between 1.5 and -6.5°C). The island was named after King George III after British explorer discovered it in 1819. Since then the island has been claimed by both Chile (1940) and Argentina (1943), but remains part of British Antarctic Territory.

**Im Preis inbegriffen**

- internationale Flüge
- Transfers
- 1 Hotelübernachtung vor der Kreuzfahrt und 1 Tageshotel nach der Kreuzfahrt, falls erforderlich
- Inlandsflüge wenn notwendig
- Geführte Zodiac-, Land- und Seetouren sowie Aktivitäten unter der Leitung des Expeditions-Teams
- Parka
- Fachkundige Lektoren und/oder Kreuzfahrtberater
- Geräumige Suiten
- Persönlicher Butler-Service für alle Suiten
- Unbegrenzt kostenloses WiFi
- Individueller Service – nahezu ein Crewmitglied pro Gast
- Auswahl an Restaurants, abwechslungsreiche Küche, freie Platzwahl
- Getränke in der Suite und auf dem gesamten Schiff – Champagner, auserlesene Weine und hochwertige Spirituosen
- Essen in der Suite und 24-Stunden Zimmerservice
- Gehobene Unterhaltung an Bord
- Sämtliche Trinkgelder an Bord

---

**Nicht im Preis inbegriffen**

- Transfers
- Reiseversicherungen
- Visa- oder Passgebühren (falls erforderlich)
- persönliche Ausgaben (Einkäufe, optionale Ausflüge)
- sonstige im Programm nicht genannte Leistungen

*Ihr Schiff*

Ihr Schiff ist die "Silver Cloud". Ausführlich stellen wir Ihnen dieses Schiff auf unseren Schiffseiten vor. [Ausführliche Informationen zu diesem Schiff.](#)

Passagiere  
240

Bordsprachen  


Eisklasse  
1C

Special  
**All-Inclusive**

