




IHRE REISE

Island, Färöer-Inseln und die norwegischen Fjorde




<i>Reisetermin</i> 11.07.2026 - 22.07.2026	<i>Reisedauer</i> 12 Tage	<i>Reederei / Schiff</i> Scenic Eclipse / SCENIC Luxury Cruises & Tours
--	-------------------------------------	---






Scenic Eclipse Grand Deluxe Veranda Suite CD, Deck 6

	<p><i>Doppelbelegung</i></p>  <p>Nicht verfügbar</p>	<p><i>Einzelbelegung</i></p>  <p>Nicht verfügbar</p>
---	--	--

Scenic Eclipse Veranda Suite A, Deck 8

	<p><i>Doppelbelegung</i></p>  <p>Nicht verfügbar</p>	<p><i>Einzelbelegung</i></p>  <p>Nicht verfügbar</p>
---	--	--

Scenic Eclipse Owners Penthouse Suite OP, Deck 9

	<p><i>Doppelbelegung</i></p>  <p>Nicht verfügbar</p>	<p><i>Einzelbelegung</i></p>  <p>Nicht verfügbar</p>
---	--	--

Scenic Eclipse Deluxe Veranda Suite CA, Deck 6



Doppelbelegung



Nicht verfügbar

Einzelbelegung



Nicht verfügbar

Scenic Eclipse Veranda Suite B, Deck 7



Doppelbelegung



Nicht verfügbar

Einzelbelegung



Nicht verfügbar

Scenic Eclipse Veranda Suite C, Deck 6



Doppelbelegung



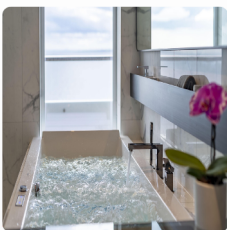
Nicht verfügbar

Einzelbelegung



Nicht verfügbar

Scenic Eclipse Spa Suite SA, Deck 9



Doppelbelegung



Nicht verfügbar

Einzelbelegung



Nicht verfügbar

Scenic Eclipse Deluxe Veranda Suite AA, Deck 7



Doppelbelegung



Nicht verfügbar

Einzelbelegung



Nicht verfügbar

Scenic Eclipse Deluxe Veranda Suite BA, Deck 7



Doppelbelegung



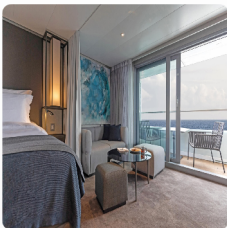
Nicht verfügbar

Einzelbelegung



Nicht verfügbar

Scenic Eclipse Grand Deluxe Veranda Suite BD, Deck 7



Doppelbelegung



Nicht verfügbar

Einzelbelegung



Nicht verfügbar

Scenic Eclipse Veranda Suite D, Deck 5



Doppelbelegung



Nicht verfügbar

Einzelbelegung



Nicht verfügbar

Scenic Eclipse Spa Suite SB, Deck 9



Doppelbelegung



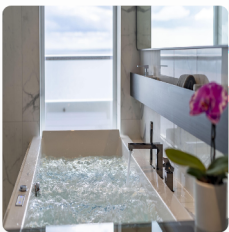
Nicht verfügbar

Einzelbelegung



Nicht verfügbar

Scenic Eclipse Spa Suite S, Deck 8



Doppelbelegung



Nicht verfügbar

Einzelbelegung



Nicht verfügbar

Scenic Eclipse Panorama Suite P, Deck 8



Doppelbelegung



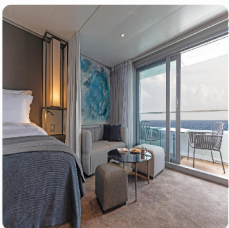
Nicht verfügbar

Einzelbelegung



Nicht verfügbar

Scenic Eclipse Grand Deluxe Veranda Suite AD, Deck 8



Doppelbelegung



Nicht verfügbar

Einzelbelegung



Nicht verfügbar

Scenic Eclipse Deluxe Veranda Suite DB, Deck 5



Doppelbelegung



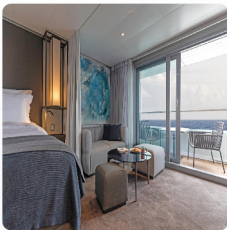
Nicht verfügbar

Einzelbelegung



Nicht verfügbar

Scenic Eclipse Grand Deluxe Veranda Suite DD, Deck 5



Doppelbelegung



Nicht verfügbar

Einzelbelegung



Nicht verfügbar

Scenic Eclipse Deluxe Veranda Suite DA, Deck 5



Doppelbelegung



Nicht verfügbar

Einzelbelegung



Nicht verfügbar

Scenic Eclipse Grand Panorama Suite GP, Deck 6



Doppelbelegung



Nicht verfügbar

Einzelbelegung



Nicht verfügbar

Scenic Eclipse Two-Bedroom Penthouse Suite TP, Deck 9



Doppelbelegung

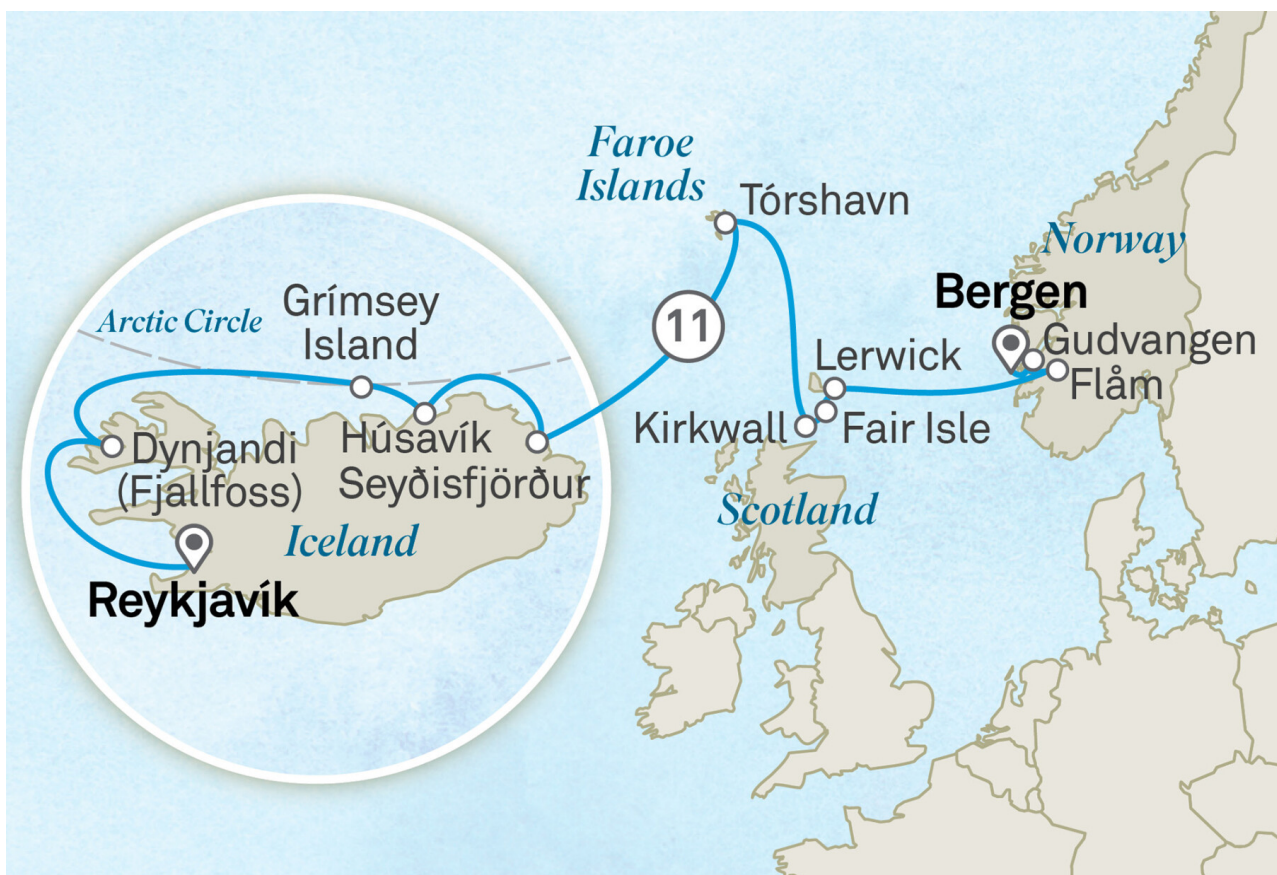


Nicht verfügbar

Einzelbelegung



Nicht verfügbar



Reykjavik

Welcome to Reykjavik, the world's northernmost capital city. Your journey begins here in Iceland's quirky and creative heart.

Tag 1

This afternoon, you'll meet the Captain and crew of your ultra-luxury Discovery Yacht, Scenic Eclipse. Be welcomed on board with a glass of Champagne and explore your spacious suite. Meet your fellow guests for a drink in the Sky Bar as you toast to the start of an epic journey.

Please book your flight to arrive into Reykjavik prior to 02:00 PM.

Dynjandivogur Waterfall

Tag 2

Weather permitting, today we visit the jewel of the Westfjords, Dynjandi Waterfall. Feel the freezing mist on your face as you admire the cascading bridal veil falls and discover why it was nicknamed 'the thunder'. Tumbling down seven tiers over 100 metres, it is one of the most beautiful waterfalls in Iceland.

Today, perhaps explore some of the indulgent spaces on board before dinner, from the welcoming Observation Lounge to the indulgent Senses Spa# with its sauna and heated therapy lounge.

Grimsey

Tag 3

Grimsey is a small island north of the Icelandic mainland, home to only 100 people and one million seabirds. Nesting on the high cliffs that surround the whole island, the chatter of seabirds here is constant, especially during the 24 hours of sunshine in summer. This green, grassy outcrop straddles the Arctic Circle, making it one of the few places on earth where you can cross over the Arctic Circle on foot – truly a once in a lifetime experience.

Scenic Eclipse will depart this afternoon and sail across the Arctic Circle, bound for Húsavík.

Húsavík

Tag 4

Nestled on the edge of Shaky Bay, Húsavík dates back to the very foundation of Iceland in 860. Its colourful houses and stunning peaks across the bay make it one of the prettiest fishing villages in the northeast, and surrounded by incredible natural wonders.

From the thundering beauty of Goðafoss waterfall to the serene landscapes of Lake Mývatn and the dramatic cliffs of Ásbyrgi Canyon, this region promises unforgettable experiences. It's also known as the Whale Capital of Iceland with various species regularly spotted in the deep blue water.

Seydisfjörður

Tag 5

In a country with an abundance of natural drama, Seyðisfjörður may steal the show. Set at the mouth of a beautiful fjord, this is East Iceland's heart of culture, heritage and hospitality – and then there's the architecture. The centre of town is known for 19th-century timber houses perched on the side of the lagoon, built by fisherfolk when the region was booming.

There's plenty of culture to go with the small-town country charm, complemented by plentiful wildlife, including reindeer and porpoises drawn by the verdant setting of cascading waterfalls and snow-capped mountains.

Djupini Channel > Torshavn, Faroe Islands

Tag 6

Stand on your private verandah this morning as Scenic Eclipse sails out through the majestic Djupini Channel, known for its dramatic cliffs rising up to 1,000 metres above sea level.

This afternoon you'll arrive at Tórshavn. Named after the Norse god Thor, this is one of the world's smallest capital cities in one of Europe's least travelled destinations. The Faroe Islands offer a captivating blend of Scandinavian culture and breathtaking natural beauty. Wander down cobbled alleyways between colourful buildings with grassy roofs and imagine life in Viking times. Towering cliffs, craggy fjords and powerful waterfalls create a wild landscape.

Kirkwall

Tag 7

Founded approximately 1000 years ago, Kirkwall is the capital of the Orkney Islands, just off the northern tip of the Scottish mainland. A Viking spirit still runs through the town, centred around the grand St Magnus Cathedral, a masterpiece of medieval architecture.

Wander the charming streets lined with quaint shops and cosy cafes, and soak up the early summer sunshine in pretty Tankerness House Gardens. Dive into Orkney's rich heritage at the Orkney Museum or go all the way back to prehistoric times at the world-famous Neolithic sites of Skara Brae and the Ring of Brodgar.

Fair Isle

Tag 8

Turning north again you'll reach Fair Isle this morning, the most southerly of the Shetlands. This tiny jewel is owned by the National Trust of Scotland and is home to just 60 people. It's rich in natural beauty and famous for its birdlife, shipwrecks and eponymous knitwear.

Enjoy kayaking excursions along its stunning coastline or embark on scenic walks, immersing yourself in the breathtaking landscapes and abundant seabirds. Learn about local history at the small museum, visit the two lighthouses or watch a local artisan at work producing genuine Fair Isle knits.

Lerwick

Tag 9

The most northerly point of the British Isles, the Shetland Islands sit almost 200 kilometres off the north coast of mainland Scotland. Lerwick is the island group's only town and has a charming waterfront lined with sandstone buildings dating back to the 18th century. This is the place where Norse heritage meets Scottish charm. Listen out for the sound of traditional Shetland music as you walk through the twisting lanes and bustling market square of this pretty harbour town.

Flam, Norway

Tag 10

Today you'll cruise through Sognefjord, the largest fjord in Norway, known as the 'King of the Fjords'. Be mesmerised by the fjord's majestic beauty, with its dramatic cliffs, emerald waters, and charming villages nestled along the shores. At its deepest, Sognefjord is more than 1,300 metres and flanked by steep mountains on either side. Take in the views from the Observation Terrace or breathe in the fresh fjord air as you sit back in one of the cabanas.

You'll arrive in the village of Flam this evening and Scenic Eclipse will dock here overnight.

Flam > Gudvangen, Norway

Tag 11

Nestled at the heart of Sognefjord and flanked by steep mountains, the tiny village of Flam is one of Norway's most popular destinations. Here you can take one of the world's most spectacular railway journeys, the 20km Flam Railway, which offers unobstructed views of the valley as it winds gently through the peaks towards the town centre.

Depart after lunch for an awe-inspiring scenic cruise through the majestic Nærøyfjord. This World Heritage-listed site is the most wild and beautiful arm of Sognefjord, with its towering cliffs and cascading waterfalls. Later, be immersed in the charming village of Gudvangen, nestled amidst dramatic landscapes.

Bergen, Norway

Your unforgettable journey finishes today in Bergen. This Hanseatic fishing port dates back to the 12th century and is now Norway's second largest city. Surrounded by seven hills and with colourful houses lining the harbour, it's considered one of the prettiest cities in the country.

Tag 12

Savour one last luxurious breakfast on board your ultra-luxury Discovery Yacht before saying farewell to the crew and new friends who have shared this journey with you. You'll be transferred to the airport for your onward journey or return flight home, taking with you memories that will last a lifetime.

Please book your flight to depart out of Bergen after 12:00 PM.

+All drinks on board, including those stocked in your mini bar, are included, except for a very small number of rare, fine and vintage wines, Champagnes and spirits. #Spa treatments at additional cost. ~Kayaking may not operate in all locations.

Please note the itinerary is a guide and may be subject to changes for operational reasons. Please refer to our terms and conditions for further information.

Im Preis inbegriffen

- Services und Annehmlichkeiten an Bord
- Maximal 229 Gäste an Bord(200 in den Polarregionen)
- Großzügige Suiten mit privater Veranda2:1-Verhältnis
- Gäste- und Butlerservice für jeden Gast
- Zehn kulinarische Erlebnisse in neun Gourmet-Menues – von gemütlicher Atmosphäre bis zum eleganten Fine Dining
- Auswahl an Premium-Markengetränken mit über 101 Whiskysorten
- Scenic Discovery Ausflüge mit dem Zodiac
- Komplettes Kajakprogramm und Stand-up-Paddle-Boarding
- Kostenloser Expeditionsparaka und Wasserflasche sowie die Nutzung von speziellen Polarstiefeln
- Interessantes Vortrags- und Bildungsprogramm mit Experten an Bord
- Spezielle Observation Lounge und Terrasse für die beste Aussicht
- Swarovski-Teleskope an Deck sowie Ferngläser in der Suite, damit Sie keinen aufregenden Momente verpassen
- Senses Spa**auf 551 m2 mit Fitnesscenter, Yoga- und Pilatesstudio
- Außen-Vitalpools nachskandinavischem Vorbild
- Modernes Theater mittäglichem Unterhaltungs- und Bildungsangebot
- WLAN inclusive
- Inlandsflüge inkl. Gebühren
- Flughafentransfers
- Trinkgelder an Bord und an Land

Nicht im Preis inbegriffen

- Internationale Flüge, sofern nicht angegeben
- Reiseversicherungen
- Visa- oder Passgebühren (falls erforderlich)
- persönliche Ausgaben (Einkäufe, optionale Ausflüge)
- sonstige im Programm nicht genannte Leistungen

Ihr Schiff

Ihr Schiff ist die "Scenic Eclipse". Ausführlich stellen wir Ihnen dieses Schiff auf unseren Schiffseiten vor. [Ausführliche Informationen zu diesem Schiff.](#)

Passagiere
199

Bordsprachen


Eisklasse
PC-6

Special
Helikopter

