

IHRE REISE

# Island-Umrundung und Überquerung des Polarkreises

Reisetermin

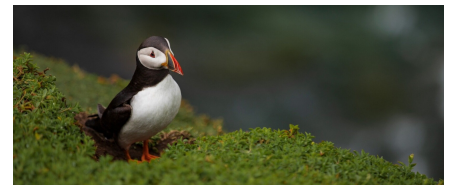
15.07.2025 - 25.07.2025

Reisedauer

11 Tage

Reederei / Schiff

Scenic Eclipse / SCENIC Luxury Cruises & Tours



## Scenic Eclipse Deluxe Veranda Suite BA, Deck 7



Doppelbelegung



€9.977

pro Person

Einzelbelegung



€16.417

pro Person

## Scenic Eclipse Deluxe Veranda Suite AA, Deck 7



Doppelbelegung



€9.977

pro Person

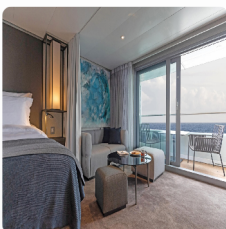
Einzelbelegung



€19.927

pro Person

## Scenic Eclipse Grand Deluxe Veranda Suite CD, Deck 6



Doppelbelegung



€10.977

pro Person

Einzelbelegung



€21.927

pro Person

Scenic Eclipse Spa Suite SA, Deck 9



Doppelbelegung

  
**€ 14.477**  
 pro Person

Einzelbelegung

  
**€ 28.927**  
 pro Person

Scenic Eclipse Panorama Suite P, Deck 8



Doppelbelegung

  
**€ 25.977**  
 pro Person

Einzelbelegung

  
**€ 51.927**  
 pro Person

Scenic Eclipse Grand Panorama Suite GP, Deck 6



Doppelbelegung

  
**€ 28.977**  
 pro Person

Einzelbelegung

  
**€ 57.927**  
 pro Person

Scenic Eclipse Owners Penthouse Suite OP, Deck 9



Doppelbelegung

  
**€ 32.772**  
 pro Person

Einzelbelegung

  
**€ 65.517**  
 pro Person

Scenic Eclipse Veranda Suite D, Deck 5



*Doppelbelegung*



Nicht verfügbar

*Einzelbelegung*



Nicht verfügbar

Scenic Eclipse Deluxe Veranda Suite DB, Deck 5



*Doppelbelegung*



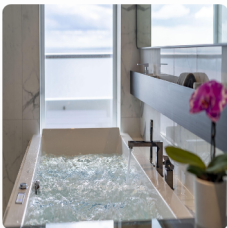
Nicht verfügbar

*Einzelbelegung*



Nicht verfügbar

Scenic Eclipse Spa Suite SB, Deck 9



*Doppelbelegung*



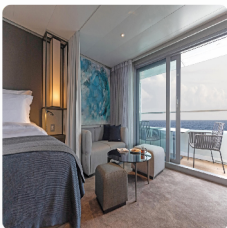
Nicht verfügbar

*Einzelbelegung*



Nicht verfügbar

Scenic Eclipse Grand Deluxe Veranda Suite BD, Deck 7



*Doppelbelegung*



Nicht verfügbar

*Einzelbelegung*



Nicht verfügbar

Scenic Eclipse Grand Deluxe Veranda Suite AD, Deck 8



Doppelbelegung



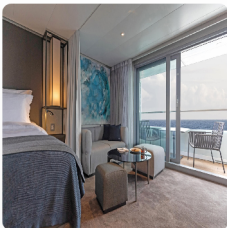
Nicht verfügbar

Einzelbelegung



Nicht verfügbar

Scenic Eclipse Grand Deluxe Veranda Suite DD, Deck 5



Doppelbelegung



Nicht verfügbar

Einzelbelegung



Nicht verfügbar

Scenic Eclipse Deluxe Veranda Suite CA, Deck 6



Doppelbelegung



Nicht verfügbar

Einzelbelegung



Nicht verfügbar

Scenic Eclipse Veranda Suite C, Deck 6



Doppelbelegung



Nicht verfügbar

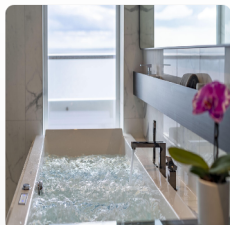
Einzelbelegung



Nicht verfügbar



Scenic Eclipse Spa Suite S, Deck 8



*Doppelbelegung*



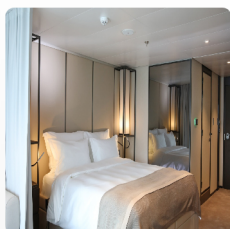
Nicht verfügbar

*Einzelbelegung*



Nicht verfügbar

Scenic Eclipse Veranda Suite B, Deck 7



*Doppelbelegung*



Nicht verfügbar

*Einzelbelegung*



Nicht verfügbar

Scenic Eclipse Deluxe Veranda Suite DA, Deck 5



*Doppelbelegung*



Nicht verfügbar

*Einzelbelegung*



Nicht verfügbar

Scenic Eclipse Veranda Suite A, Deck 8



*Doppelbelegung*



Nicht verfügbar

*Einzelbelegung*



Nicht verfügbar

Scenic Eclipse Two-Bedroom Penthouse Suite TP, Deck 9



*Doppelbelegung*

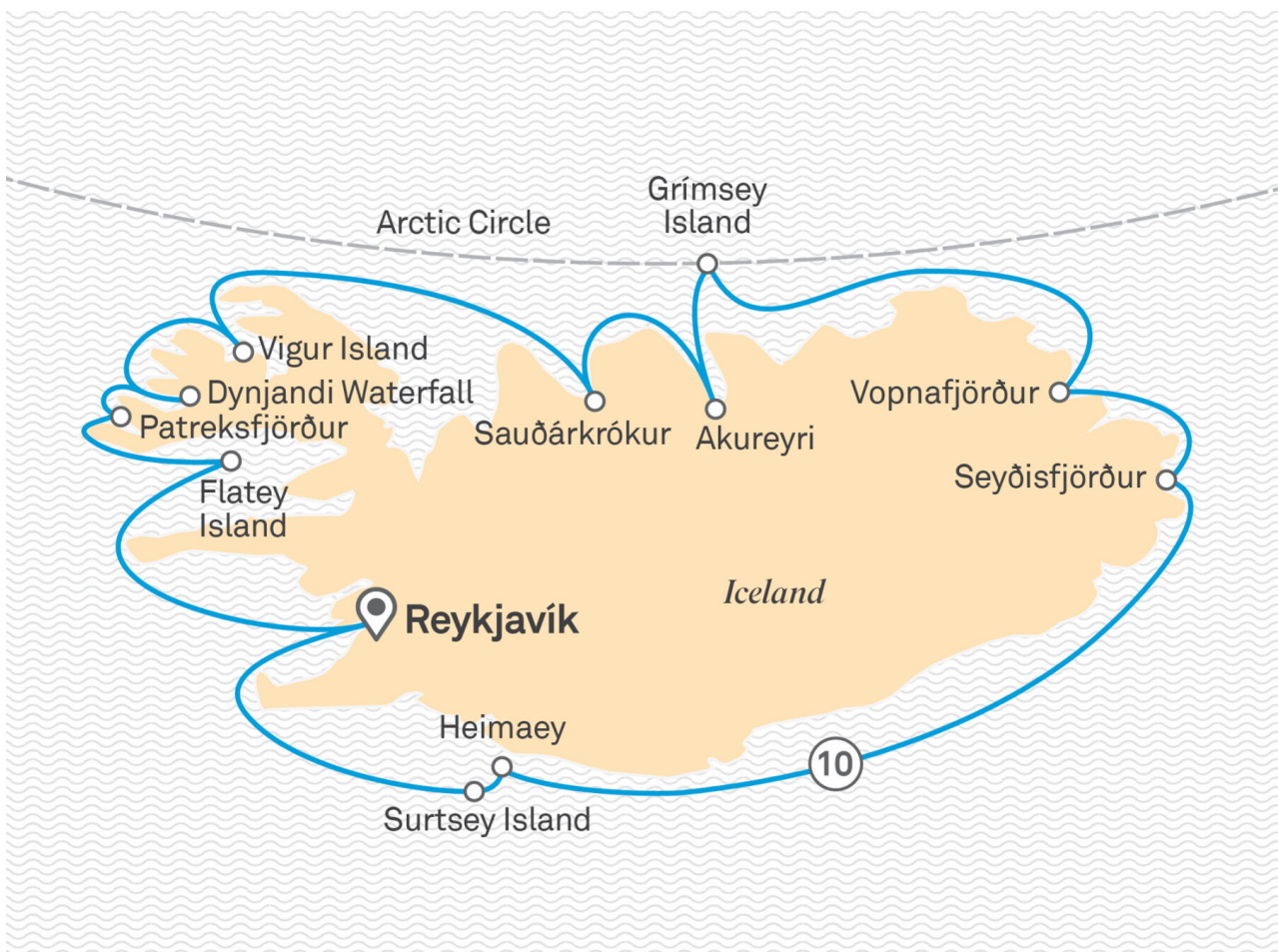


Nicht verfügbar

*Einzelbelegung*



Nicht verfügbar



## Reykjavík, Iceland

Tag 1

Welcome to Reykjavík, the world's northernmost capital city. Your journey begins here in Iceland's quirky and creative heart.

Join us as we embark on a culinary journey aboard your 6-star Discovery Yacht. The Captain and crew of Scenic Eclipse will welcome you on board with a glass of Champagne as you familiarise yourself with your new home.

Please book your flight to arrive into Reykjavik prior to 02:00 PM.

## Flatey Island

Tag 2

Welcome to Flatey, a private island nestled amidst the breathtaking landscapes of Iceland's northwest coast. The wooden houses on this remote outcrop were built over 100 years ago, but are so well-preserved you'll feel as though you've stepped into the past. Just a couple of farmers live here now, surrounded by pristine beaches and this charming villages frozen in time.

Later this afternoon we will sail past the towering Látrabjarg bird cliffs. This dramatic promontory is the westernmost point of Iceland and is one of the largest bird cliffs in Europe. It's home to millions of seabirds, including puffins, razorbills, fulmar, guillemot, kittiwakes and more, who nest in the cliff with their chicks.

**Taste of Discovery:** The evening begins with the Captain's Welcome Reception, where you'll meet the esteemed Scenic Eclipse crew and mingle with fellow travelers in an elegant setting. Meet Acclaimed Celebrity Top Chef, Bryan Voltaggio, who will be responsible for the culinary delights you'll savor throughout this cruise, sharing his passion for gourmet cuisine and setting the stage for an unforgettable culinary journey. Enjoy this special moment while sipping a cocktail specially created by the chef for this occasion.

**Discovery:** Enjoy immersive Discovery experiences such as kayaking and zodiac cruising, subject to weather conditions and harbour master approval.

## Patreksfjörður > Dynjandivogur Waterfall

Tag 3

Known as the fjord of adventures, Patreksfjörður is the largest town along the southern part of the Westfjords region. See millions of seabirds, including puffins, razorbills and guillemots, nesting on the dramatic Látrabjarg bird cliffs. Walk along its spectacular beaches, where the sand ranges from powder white to rich gold.

Weather permitting, this afternoon we visit the jewel of the Westfjords, Dynjandi Waterfall. Feel the freezing mist on your face as you admire the cascading bridal veil falls and discover why it was nicknamed 'the thunder'. Tumbling down seven tiers over 100 metres, it is one of the most beautiful waterfalls in Iceland.

**Taste of Discovery:** An exclusive cooking demonstration with our celebrity chef, Bryan Voltaggio. Watch as Chef Bryan showcases his culinary skills, followed by a Q&A session where you'll have the chance to learn more about his cooking techniques and culinary journey.

### Freechoice:

Fishing Tasting & Walking Tour: Explore Patreksfjörður, a fishing village known for eco-friendly practices. Walk through the harbor, tasting various fresh fish, and learning about traditional fish drying methods with tastings of dried fish and Icelandic butter.

Látrabjarg Cliff: Visit Europe's largest bird cliff, Látrabjarg, and witness incredible bird life, including puffins. Enjoy breathtaking views and photography opportunities.

Raudasandur Beach Hike (led by Discovery Team): Discover Rauðasandur Beach, renowned for its red sands, after a 2.7-kilometer hike from Patreksfjörður. This tranquil spot in Iceland's Westfjords offers stunning contrasts of red sands, blue sea, and dark cliffs.

## Vigur Island

Tag 4

Welcome to Vigur Island, a tranquil oasis where time seems to stand still. This private island is a wildlife sanctuary and protects an enormous colony of birds, including puffins, Arctic terns, eider ducks, black guillemots and razorbills.

Explore this remote sanctuary, dotted with charming houses and lush landscapes, and take in panoramic views of the surrounding fjords. The island is home to the smallest post office in Europe and you can sample a traditional hjónabandssæla cake at the small cafe.

**Taste of Discovery: Pop-Up Restaurant\* Night 1** Experience an unforgettable evening, where Chef Bryan has crafted a special themed menu exclusively for this night. Each dish is a masterpiece, thoughtfully curated to tantalize your taste buds and delight your senses. Immerse yourself in a dining experience like no other, where every course tells a story and every flavour is a journey.

\*Every guest will have the opportunity to dine once in our exclusive pop-up restaurant during the voyage.

Each guest will receive an invitation with their assigned evening for this unique dining experience.

## Sauðárkrókur

The friendly town of Sauðárkrókur is located in a fertile valley along the south-western shore of Skagafjörður Fjord. Although Sauðárkrókur was officially settled in 1871, it is linked to history dating back to the ancient Grettir's Saga of the 13th century. It's the largest town in northwest Iceland, though is home to just over 2,500 people. The charming downtown will welcome you as you stroll through the small collection of distinctive, traditional buildings where the past seems to be brought back to life.

### Freechoice:

Tag 5

Drangey Island & bird watching: Explore Drangey Island, a birdwatcher's paradise, home to puffins and other seabirds. Enjoy a hike, stunning views, and ancient legends of Iceland.

Town Walk & Battle Exhibition: Discover Skagafjörður's history through a town walk and interactive exhibition on Iceland's bloody Sturlungur Era.

Hiking in Sauðárkrókur: Explore the mystical beauty of Tindastoll, a mountain rich in legends and stunning landscapes. Let your guided hike unveil tales of trolls and mythical creatures as you journey through this enchanting terrain.

**Discovery:** Enjoy immersive Discovery experiences such as kayaking and zodiac cruising, subject to weather conditions and harbour master approval.

## Akureyri

Akureyri is the country's second largest settlement after Reykjavik, but with only around 20,000 residents it still feels like a friendly small town. Though it sits just 60km below the Arctic Circle, the climate is pleasantly mild and picturesque, with colourful homes set on green hills at the base of a volcanic mountain chain.

Tag 6

See the striking Akureyri Church and stroll through one of the world's most northerly botanic gardens, home to endemic Icelandic flora and hardy foreign species. Keep an eye out for the elves and hidden people that are said to dwell in the town.

### Freechoice:

Leisurely Akureyri & Goðafoss Waterfall: Explore Akureyri, the "capital of the North," enjoy its charming architecture and Botanical Gardens, and visit the stunning Goðafoss Waterfall.

Whale Watching Akureyri: Witness humpback whales performing acrobatics in Eyjafjörður Bay, along with other marine wildlife.

Panoramic City and & Forest Lagoon: Enjoy a city tour of Akureyri and relax in the geothermal spa at Vaðlaskógur forest.

Jewels of the North: Discover hot springs and lava fields around Lake Mývatn, including Dimmuborgir's lunar-like lava formations.

## Grímsey Island

Grímsey is a small island north of the Icelandic mainland, home to only 100 people and one million seabirds. Nesting on the high cliffs that surround the whole island, the chatter of seabirds here is constant, especially during the 24 hours of sunshine in summer. This green, grassy outcrop straddles the Arctic Circle, making it one of the few places on earth where you can cross over the Arctic Circle on foot – truly a once in a lifetime experience.

Scenic Eclipse will set sail just after lunchtime, when you will get to sail across the Arctic Circle on your way to Vopnafjörður.

Tag 7

**Taste of Discovery: Pop-Up Restaurant Night 2** Experience an unforgettable evening, where Chef Bryan has crafted a special themed menu exclusively for this night. Each dish is a masterpiece, thoughtfully curated to tantalize your taste buds and delight your senses. Immerse yourself in a dining experience like no other, where every course tells a story and every flavour is a journey.

### Freechoice:

Guided Walk: Explore this remote and beautiful island, hear tales of folklore and legend, and receive a certificate for crossing the Arctic Circle.

Passenger Train: Ride around the tiny island on a petite passenger train that loop around the lighthouse, through the village and past the Arctic Circle Monument.

**Discovery:** Enjoy immersive Discovery experiences such as kayaking and zodiac cruising, subject to weather conditions and harbour master approval.

## Vopnafjörður > Seyðisfjörður

Vopnafjörður is a hidden gem along Iceland's stunning eastern coast. It's long been a busy trading port and is still a flourishing village, home to around 600 people. Many people with Icelandic heritage can trace their history here as it was the largest emigration point for North America in the late 19th and early 20th centuries.

The highlight here is the sprawling, pristine fjordlands that wind along the coast. Embark on outdoor experiences like hiking and birdwatching in the surrounding mountains, offering a true taste of Icelandic wilderness.

**Taste of Discovery: Pop-Up Restaurant Night 3** Experience an unforgettable evening, where Chef Bryan has crafted a special themed menu exclusively for this night. Each dish is a masterpiece, thoughtfully curated to tantalize your taste buds and delight your senses. Immerse yourself in a dining experience like no other, where every course tells a story and every flavour is a journey.

### Freechoice:

Tag 8

**Canyons & Cliffs Hike:** Hike along the scenic Gljúfursá river on the Drangnes peninsula, taking in breathtaking views of the Gljúfursárfoss waterfall and the dramatic coastline.

**Burstarfell Turf House Visit & Walk:** Explore Bustarfell Museum, a beautifully preserved turf house showcasing Icelandic life from the 18th to mid-20th century.

**Leisure Walk around Vopnafjörður:** Experience the charming village of Vopnafjörður with a local guide, exploring abandoned houses, learning about local folklore, visiting the first settlement and church, and enjoying traditional Icelandic refreshments.

**Stuðlagil Canyon & Sænaútasel Farm:** Discover Iceland's Stuðlagil Canyon, a stunning natural wonder, and visit the nearby Sænaútasel Farm to explore its restored farmhouse and rich history.

**Discovery:** Enjoy immersive Discovery experiences such as kayaking and zodiac cruising, subject to weather conditions and harbour master approval.

## Seyðisfjörður

In a country with an abundance of natural drama, Seyðisfjörður may steal the show. Set at the mouth of a beautiful fjord, this is East Iceland's heart of culture, heritage and hospitality – and then there's the architecture. The centre of town is known for 19th-century timber houses perched on the side of the lagoon, built by fisherfolk when the region was booming.

There's plenty of culture to go with the small-town country charm, complemented by plentiful wildlife, including reindeer and porpoises drawn by the verdant setting of cascading waterfalls and snow-capped mountains.

**Taste of Discovery: Pop-Up Restaurant Night 4** Experience an unforgettable evening, where Chef Bryan has crafted a special themed menu exclusively for this night. Each dish is a masterpiece, thoughtfully curated to tantalize your taste buds and delight your senses. Immerse yourself in a dining experience like no other, where every course tells a story and every flavour is a journey.

### Freechoice:

Tag 9

**Chasing Waterfalls – Hike:** Experience a breathtaking hiking adventure through the scenic Vestdalur Valley, showcasing stunning landscapes like waterfalls, meadows, wetlands, and ancient human settlements over a thousand years ago.

**Vök Baths:** Plunge into Iceland's purest hot spring water that comes from naturally heated springs deep below a frozen lake.

**History and Heritage Walk:** Visit Fjörður's archaeological site and stroll through the town's historic district. Enjoy refreshments at Skaftfell Bistro and explore the Technical Museum.

**Nature walk Skalanes:** Explore an archaeological site and Skálanes nature center, spotting diverse wildlife. Enjoy scenic views and local refreshments.

**RIB Boat Tour - Discover Seyðisfjörður** by RIB boat, with wildlife sightings and local stories.

**Discovery:** Enjoy immersive Discovery experiences such as kayaking and zodiac cruising, subject to weather conditions and harbour master approval.

## Heimaey

The earth is always rumbling beneath Iceland. Today, you'll see a perfect example of nature's ability to both create and destroy. When the volcano Eldfell, meaning 'Hill of Fire', erupted here in 1973, parts of the island were covered in lava and ash, sealing them in a virtual time capsule. Walking through the town, you'll be able to see signs of the eruption and fallout.

Keep your eyes open for our black and white friends, with more Atlantic puffins nesting here than anywhere else in the world.

**Taste of Discovery:** Join us for our second cooking demonstration and an engaging food lecture with our celebrity chef Bryan Voltaggio. In this special event, Chef Bryan will share the fascinating story behind one of his signature dishes, offering insights into his inspiration and culinary approach.

**Taste of Discovery: Pop-Up Restaurant Night 5** Last opportunity to experience an unforgettable evening, where Chef Bryan has crafted a special themed menu exclusively for this night. Each dish is a masterpiece, thoughtfully curated to tantalize your taste buds and delight your senses. Immerse yourself in a dining experience like no other, where every course tells a story and every flavour is a journey.

### Freechoice:

Boat Tour of Heimaey: Explore the Westman Islands, spot puffins and caves, and enjoy a unique musical experience in Klettshellir.

Volcanic Hike & Eldheimar Museum: Hike Eldfell volcano, learn its impact on the town and visit the Eldheimar Museum.

Bus Tour & Eldheimar Museum: Join a guided bus tour to see island sights, including the Eldheimar Museum.

## Reykjavik

Scenic Eclipse will return to Reykjavik this morning. This is a city that never disappoints – a busy, buzzy capital with a creative soul, wild nightlife and a population of cool, quirky Reykvíkingurs. Stay longer to explore its stylish restaurants, chic boutiques, innovative galleries and fascinating museums.

After one final breakfast on board, you'll disembark your ultra-luxury Discovery Yacht. Farewell the crew and your fellow guests, taking with you a wealth of memories of an unforgettable voyage.

Please book your flight to depart out of Reykjavik after 12:00 PM.

\*Flights on board our two helicopters and submersible experiences are at additional cost, subject to regulatory approval, availability, weight restrictions, medical approval and weather, ice and tidal conditions.

#Spa treatments at additional cost. +All drinks on board, including those stocked in your mini bar, are included, except for a very small number of rare, fine and vintage wines, Champagnes and spirits. Specialty restaurants require a reservation, enquire on board.

\*All Event dates and times are to be determined and are subject to change.

The itinerary is a guide only and may be amended for operational reasons. As such Scenic cannot guarantee the voyage will operate unaltered from the itinerary stated above. Please refer to our terms and conditions for further information.

#### **Im Preis inbegriffen**

- Services und Annehmlichkeiten an Bord
- Maximal 229 Gäste an Bord (200 in den Polarregionen)
- Großzügige Suiten mit privater Veranda 2:1-Verhältnis
- Gäste- und Butlerservice für jeden Gast
- Zehn kulinarische Erlebnisse in neun Gourmet-Menues – von gemütlicher Atmosphäre bis zum eleganten Fine Dining
- Auswahl an Premium-Markengetränken mit über 101 Whiskysorten
- Scenic Discovery Ausflüge mit dem Zodiac
- Komplettes Kajakprogramm und Stand-up-Paddle-Boarding
- Kostenloser Expeditionsarka und Wasserflasche sowie die Nutzung von speziellen Polartiefeln
- Interessantes Vortrags- und Bildungsprogramm mit Experten an Bord
- Spezielle Observation Lounge und Terrasse für die beste Aussicht
- Swarovski-Teleskope an Deck sowie Ferngläser in der Suite, damit Sie keinen aufregenden Momente verpassen
- Senses Spa\*\* auf 551 m2 mit Fitnesscenter, Yoga- und Pilatesstudio
- Außen-Vitalpools nachskandinavischem Vorbild
- Modernes Theater mittäglichem Unterhaltungs- und Bildungsangebot
- WLAN inclusive
- Inlandsflüge inkl. Gebühren
- Flughafentransfers
- Trinkgelder an Bord und an Land

---

#### **Nicht im Preis inbegriffen**

- Internationale Flüge, sofern nicht angegeben
- Reiseversicherungen
- Visa- oder Passgebühren (falls erforderlich)
- persönliche Ausgaben (Einkäufe, optionale Ausflüge)
- sonstige im Programm nicht genannte Leistungen



## Ihr Schiff

Ihr Schiff ist die "Scenic Eclipse". Ausführlich stellen wir Ihnen dieses Schiff auf unseren Schiffseiten vor. [Ausführliche Informationen](#) zu diesem Schiff.

Passagiere  
199

Bordsprachen  


Eisklasse  
PC-6

Special  
Helikopter

