

IHRE REISE

*Kanadas abgelegene Arktis: Die Ellesmere- und Axel-Heiberg-Insel*

Reisetermin  
 09.09.2025 - 20.09.2025

Reisedauer  
 12 Tage

Reederei / Schiff  
 Ultramarine / Quark Expeditions



Explorer Suite



Doppelbelegung

  
**€ 15.900**  
 pro Person

Einzelbelegung

  
**€ 25.634**  
 pro Person

Gemeinschaftsbelegung

  
**€ 15.900**  
 pro Person

Ultramarine Balkon Suite



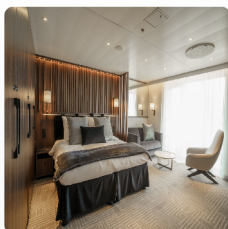
Doppelbelegung

  
**€ 17.342**  
 pro Person

Einzelbelegung

  
**€ 28.083**  
 pro Person

Deluxe Balkon Suite




Doppelbelegung

  
**€ 20.055**  
 pro Person


Einzelbelegung

  
**€ 38.114**  
 pro Person

**Penthouse Suite**




*Doppelbelegung*



**€21.496**

pro Person

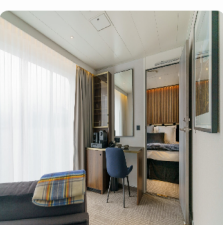
*Einzelbelegung*



**€40.997**

pro Person

**Owner's Suite**




*Doppelbelegung*



**€27.007**

pro Person

*Einzelbelegung*



**€52.019**

pro Person

**Ultra Suite**



*Doppelbelegung*



**€29.635**

pro Person


*Einzelbelegung*




**€57.276**

pro Person

**Explorerer Dreibettkabine**




*Dreibettbelegung*



Nicht verfügbar

*Gemeinschaftsbelegung*



Nicht verfügbar

Panorama Einzelkabine



*Einzelbelegung*



Nicht verfügbar

Terrace Suite



*Doppelbelegung*

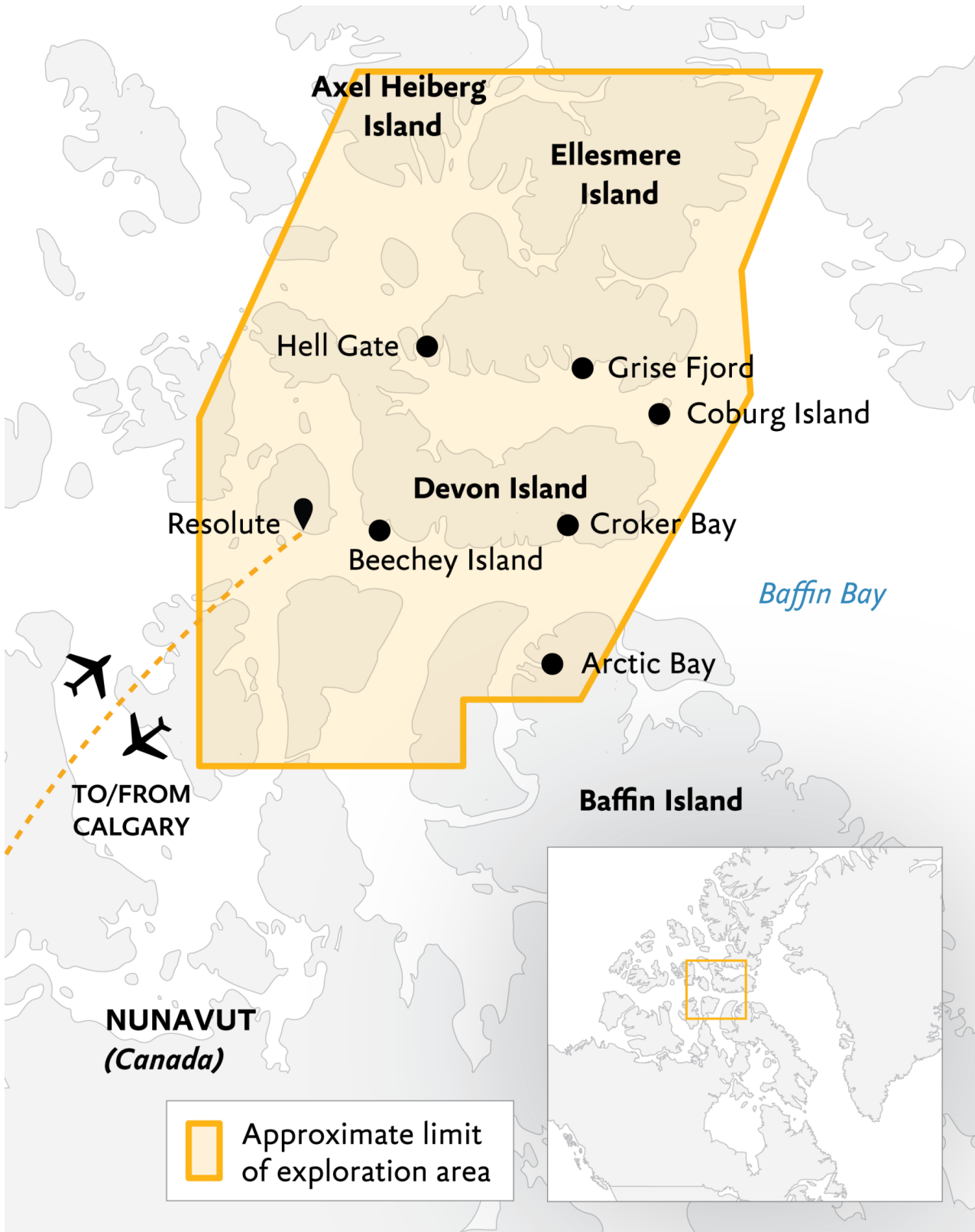


Nicht verfügbar

*Einzelbelegung*



Nicht verfügbar



## **Calgary, Canada**

### **ARRIVE IN CALGARY, CANADA**

Day 1

Your Arctic expedition begins in Calgary. Explore this vibrant city on your own before you spend the night enjoying the comforts and amenities of your designated hotel.

## **Resolute, Canada**

### **FLY TO RESOLUTE AND EMBARK**

Day 2

This morning, board your charter flight to Resolute, Nunavut. Upon arrival, you may have a chance to check out this small hamlet on foot before being transferred to your ship via Zodiac or helicopter (depending on ship location and weather conditions).

## Cruising

### EXPLORING CANADA'S HIGH ARCTIC

Cruising around the remote islands of the Canadian High Arctic aboard Ultramarine, the newest ship in our fleet, you'll navigate the same icy inlets, channels and bays that fascinated legendary explorers of long ago. Designed to give polar adventurers unprecedented access to the hardest-to-reach places on the planet—and equipped with two onboard twin-engine helicopters for unparalleled access to areas only Quark Expeditions can bring you—this one-of-a-kind ship will take you beyond the familiar in polar exploration. Throughout your journey, your Expedition Team will keep an eye toward immersing you in the best the Arctic has to offer, including reaching Canada's most northerly islands: Axel Heiberg Island and the rarely visited Ellesmere Island, at the top of the world. Remember that no two polar voyages are alike, since each expedition presents new opportunities and different weather and ice conditions. While this voyage has no fixed itinerary, our objective is to visit as many of the incredible highlights the season has to offer, using our extensive expertise to give you the best experience. Each day, your highly skilled Expedition Team will read the conditions and choose the best course to set, but despite their knowledge of these areas, each visit brings something new to discover. That said, our expeditions will have some elements in common, including daily Zodiac cruising, land excursions, a robust education program, a community visit and wildlife viewing opportunities. And thanks to our onboard helicopters, you'll also discover the ultimate polar expedition experience: While polar landscapes are spectacular from the sea and on land, the view from the air is uniquely stunning. Conditions permitting, you'll enjoy an ultra-immersive flightseeing activity (short sightseeing flights around your ship and surrounding areas) unique to Ultramarine, giving you an awe-inspiring polar experience like no other. While this waterway is known to European cultures as the Northwest Passage, this area has nurtured and sustained the Inuit and their predecessors who have called these shores home for almost 5,000 years. Moving through these remote landscapes you will be traveling through the ancestral homelands of this ancient culture, illuminated in person by Inuit guides onboard and ashore. Nunavut is an Inuktitut word meaning "our land" and the Nunavummiut (the people of Nunavut) are renowned for their incredible resourcefulness, hospitality, good humor, and a deep knowledge of the land and animals that has allowed them to thrive in the far north for millennia. Ultimately, your Expedition Team will keep its eye northward, hoping to follow in the footsteps of the lucky few polar adventurers who have transited through the famous Hell Gate to reach the top of the world, the spectacular Ellesmere Island. If conditions are right, the soaring, ominous snow-capped peaks of this polar desert will come into focus as we approach. The northernmost island in the Canadian Arctic Archipelago, Ellesmere is one of the most remote places on the planet, a land of deep fjords, jagged mountains and massive ice shelves. If we're fortunate enough to reach here, you will be among the few polar explorers to do so. One of the goals of this expedition is to introduce guests to the unique glaciology of Axel Heiberg Island, Canada's second-most northerly island, one-third of which is covered in glaciers. A glacier that spreads out as a wide lobe as it leaves a narrow mountain valley to enter a wider valley or a plain. Axel Heiberg is home to the most dramatic and impressive Piedmont glaciers in the world. The Piedmont glacier spreads out as a wide lobe as it makes its way out of a narrow mountain valley into a wider valley or a plain. Birders will want to have their binoculars and cameras at the ready, as the island also affords opportunities for sightings of snow buntings, ptarmigans, jaegers and arctic terns, among others. Wildlife sightings are almost guaranteed, as many of the areas we hope to explore are home to a surprising number of birds and mammals that thrive in this challenging environment. You may see polar bears, muskoxen and several bird species, such as gyrfalcons and dovekies (little auks). If you're lucky, you may even spot the elusive narwhal or arctic wolf, though sightings of these iconic creatures in the wild are rare, even in these areas where we have the highest chances of encountering them. Coburg Island, for instance, is a wildlife reserve for such birds as snowy owls and peregrine falcons, while the impressive vertical cliffs of Prince Leopold Island are dotted with nesting seabirds like northern fulmars and black guillemots. The sheltered shores and steep cliffs of Arctic Bay, a hamlet located off of Admiralty Inlet, provide an ideal nesting habitat for various High Arctic birds such as snow geese, thick-billed murres (Brünnich's guillemots) and kittiwakes. The region has been inhabited by Inuit and Thule cultures for almost 5,000 years. This community is an ideal spot to go ashore and learn more about the Inuit culture, sampling the local cuisine and mingling with artists, perhaps picking up carvings or other handicrafts as a memento of your polar adventure. Devon Island is another possible locale for wildlife encounters, as walrus, polar bears and muskoxen inhabit the area, which is also the location of the remains of a Royal Canadian Mounted Police outpost, established at Dundas Harbour in 1924 to curb foreign whaling and other activities. Nearby is a small cemetery, one of Canada's most northerly, still maintained by the RCMP to this day. Another exciting excursion your Expedition Team might offer, conditions permitting, is the opportunity to fly up to explore the Devon ice cap, one of the largest in the Canadian Arctic. History buffs will also be intrigued by the chance to visit an abandoned Hudson's Bay Company trading post at Fort Ross, at the southern end of Somerset Island, and pay their respects to the ill-fated Franklin expedition of 1845–46 at the gravesite of three crew members on Beechey Island, one of Canada's most significant Arctic exploration sites. You may have the opportunity to cruise in a Zodiac along the face of an active glacier near Croker Bay and possibly even witness the wonders of calving ice, at a safe distance. Listen closely for the steady crackle and deep roars as slabs of ice break off and crash into the water below. You'll also want to be on the lookout for the walrus that are often seen in the area. There is no shortage of natural beauty, wildlife and history in Canada's High Arctic. Each day, you'll discover something new and inspiring, whether it is admiration of the tundra flora to survive the extremely rugged environment, a rare bird species soaring overhead, a polar bear on the hunt in its natural habitat, or the ancient remains of a Thule dwelling, predecessors of the Inuit who live here today.

Days 3 to 10

## Resolute, Canada

### DISSEMBARK IN RESOLUTE, CANADA AND FLY TO CALGARY

Day 11

After disembarking in Resolute, you'll be transferred to your charter flight to Calgary, where you'll spend the night at your included hotel.

Day 12

## **Calgary, Canada**

### **DEPART CALGARY**

Today, make your way to the airport to catch your homeward flights, or spend the day exploring this fascinating city.

#### **Im Preis inbegriffen**

- Führung während der gesamten Reise durch unsere erfahrenen Expeditionsleiter, einschließlich Landgänge und andere Aktivitäten
- Alle Zodiac-Transfers und Fahrten gemäß dem Tagesprogramm
- Alle Landgänge gemäß dem Tagesprogramm
- Unterkunft an Bord mit täglichem Housekeeping
- Alle Mahlzeiten, Snacks, alkoholfreie Getränke und Säfte an Bord während der gesamten Reise (Bitte informieren Sie uns so weit wie möglich im Voraus über eventuelle Diätwünsche. Die Schiffsküche kann leider keine koscheren Mahlzeiten zubereiten).
- Bier, Standardweine und -spirituosen sowie Cocktails während der Barservicezeiten und beim Abendessen; sowie Kaffee, Tee und Kakao rund um die Uhr verfügbar
- Jeder Gast kann sich mit jeweils einem Gerät beim Wi-Fi-Service des Schiffes anmelden. Dieser ergänzende Wi-Fi-Dienst ermöglicht grundlegendes Surfen im Internet, vorbehaltlich Satellitenempfang
- Formelle und informelle Präsentationen durch unser Expeditionsteam und Gastredner nach Plan
- Ein Fototagebuch zur Dokumentation der Expedition
- Ein Paar wasserdichte Expeditionsstiefel für Anlandungen und Zodiacfahrten (leihweise)
- Ein offizieller Parka von Quark Expeditions®, den Sie behalten können
- Haartrockner und Bademäntel in jeder Kabine
- Alle sonstigen Service-Steuern und Hafengebühren während des Programms
- Sämtliches Gepäckhandling an Bord des Schiffes
- Notfall-Evakuierungsversicherung für alle Passagiere bis zu einer maximalen Leistung von 500.000 USD pro Person

#### **Nicht im Preis inbegriffen**

- Obligatorisches Transferpaket
- Internationale Flugkosten
- Transfers bei Ankunft und Abreise, außer wenn im obligatorischen Transferpaket aufgeführt
- Kosten für Reisepass und Visum
- Kanadisches eTA erforderlich für nicht-kanadische oder U.S.-amerikanische visumbefreite Passagiere
- Staatliche Ankunfts- und Abflugsteuern, die nicht oben aufgeführt sind
- Mahlzeiten an Land, sofern nicht anders angegeben
- Reisegepäck-, Reiserücktritts-, Reiseabbruch- und Reisekrankenversicherung – dringend empfohlen
- Übergepäckgebühren auf internationalen Flügen
- Obligatorische wasserdichte Hosen für die Zodiacfahrt oder andere nicht erwähnte Ausrüstung
- Wäscherei-, Bar- und andere persönliche Kosten, sofern nicht angegeben
- Telefon- und Internetgebühren
- Freiwillige Trinkgelder am Ende der Reise für das Bordpersonal und die Crew
- Zusätzliche Übernachtungsmöglichkeiten
- Aktivitäten, die nicht in den Inklusivleistungen aufgeführt sind



*Ihr Schiff*

Ihr Schiff ist die "Ultramarine". Ausführlich stellen wir Ihnen dieses Schiff auf unseren Schiffseiten vor. [Ausführliche Informationen zu diesem Schiff.](#)

Passagiere  
199

Bordsprachen  


Eisklasse  
PC-6

Special  
Helikopter

