

IHRE REISE

*Arktis Saga: Entdecke Spitzbergen,  
 Färöer Inseln und Jan Mayen*

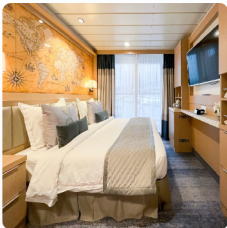
Reisetermin  
 02.05.2026 - 16.05.2026

Reisedauer  
 15 Tage

Reederei / Schiff  
 Ocean Explorer / Quark Expeditions



Deluxe Veranda Forward Kabine



Doppelbelegung



~~15.345~~  
**€ 11.890**

pro Person

Einzelbelegung



~~25.422~~  
**€ 19.549**

pro Person

Veranda Kabine



Doppelbelegung



~~16.045~~  
**€ 12.422**

pro Person

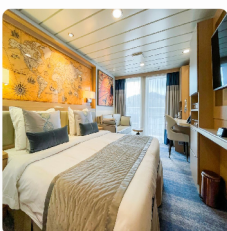
Einzelbelegung



~~26.612~~  
**€ 20.453**

pro Person

Veranda Suite



Doppelbelegung



~~16.945~~  
**€ 13.106**

pro Person

Einzelbelegung



~~28.142~~  
**€ 21.616**

pro Person

**Junior Suite**



*Doppelbelegung*



~~19.845~~  
**€ 15.310**

pro Person

*Einzelbelegung*



~~38.740~~  
**€ 29.670**

pro Person

**Studio Single**




*Einzelbelegung*




~~19.845~~  
**€ 15.310**

pro Person

**Studio Veranda Single**

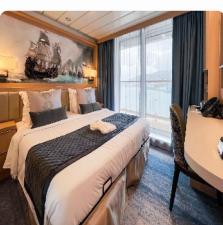


*Einzelbelegung*




Nicht verfügbar

**Penthouse Suite**




*Doppelbelegung*



Nicht verfügbar

*Einzelbelegung*



Nicht verfügbar

Owners Suite



*Doppelbelegung*



Nicht verfügbar

*Einzelbelegung*



Nicht verfügbar



## Aberdeen, Scotland

**ARRIVE IN ABERDEEN, UNITED KINGDOM**

Day 1

Arrive any time on Day 1 and make your way to your included hotel. The gateway for your Arctic adventure, the Scottish city of Aberdeen has many monikers, but its most famous is Granite City, as it was once the granite capital of the world. Wandering the streets, you'll soon see why, as the Victorian buildings sparkle in the sun. A bustling cultural hub, Aberdeen also offers a range of museums, galleries, theaters, shops, cafés and restaurants to explore.

## Aberdeen, GB

### EMBARKATION DAY

Day 2

Today you will have some free time before being transferred to the port to board your ship. As you set sail this afternoon, you'll want to be out on deck, camera in hand—the area's coastal waters offer excellent possibilities for spotting bottlenose and white-beaked dolphins, harbor porpoises and minke whales.

## Cruising

### EXPLORING FAIR ISLE

Day 3

The U.K.'s most remote inhabited island, the extraordinary Fair Isle is located halfway between the Shetland and Orkney Islands. Boasting a rugged beauty, Fair Isle's landscape is diverse, with fields and moors dominated by seaside cliffs and an astounding number of sea stacks, natural arches and caves. Despite its small size, the island offers activities for history, nature and photography buffs alike. Visit the museum to immerse yourself in local artifacts, photos, knitwear and other historic memorabilia. Don't forget to snap a shot of the circa 1935 classic red phone booth by the post office! In terms of wildlife, orcas are native to the waters around Fair Isle, and they sometimes come close in pursuit of seals. But the island is best known for its coastal cliffs teeming with seabirds in spring and summer. The star attraction is the Atlantic puffin, a clown-like bird that burrows in nests in the grassy flat tops of the island's cliffs. Photographers will surely want to capture pictures of their bemused expressions, and Fair Isle's easily accessible grassy banks make it one of the best places in the Shetlands (if not the entire Scottish Isles!) to observe these colorful creatures. Northern fulmars, kittiwakes, storm petrels, razorbills and guillemots may be spotted soaring over the open waters. Visitors to this community of crofters, artisans and artists may be able to pick up a traditional Fair Isle sweater to keep warm during the rest of your Arctic voyage.

## Cruising

### EXPLORING THE FAROE ISLANDS

Days 4 and 5

Known for its beautiful, unspoiled landscape, with verdant pastures giving way to rugged, steep cliffs, the Faroe Islands have a storied past, though the details of the archipelago's early history remain mysterious. The first settlers may have been seventh-century Irish monks seeking solitude on these islands far removed from any continent. Their isolation ended in 800 AD, with the arrival of Norse farmers, and Norwegian colonization continued throughout the Viking Age. Today, many of the inhabitants of the Faroe Islands, now a self-governing country within the Kingdom of Denmark, are descendants of Norwegian Vikings, and speak Faroese, a descendant language of Old Norse. We will have two days to explore this seldom-visited archipelago made up of 18 rugged islands located about halfway between Scotland and Iceland. The mighty North Atlantic is omnipresent wherever we go with no place on the Faroe Islands farther than 3 miles (5 km) from its shores. The sea has always dominated life on the Faroes—throughout history as much as today: rich fisheries, magnificent ocean views and thriving sea bird colonies make up this rare Nordic jewel—often referred to as Europe's best kept secret. We will spend a day exploring the outer islands of the archipelago, separated by narrow sounds and fjords, and delight in their surreal landscapes, dramatic cliffs, and rock formations. You'll see green valleys engulfed by steep mountains, protecting picturesque villages with colorful turf-topped homes. Wind, weather and sea conditions will influence and shape our activity options, but we will of course always keep our eyes out for marine and bird life, especially the iconic Atlantic puffin. Our second day in the Faroes will be dedicated to the capital city of Tórshavn, where the Vikings established their government in 825 AD. One of the world's smallest capitals, the picturesque Tórshavn has a relaxed vibe and a number of historical and cultural sites. Meander the maze of narrow laneways of the Old Town, admiring the quaint wooden houses with traditional sod roofs and white paned windows. If you're looking for more action, a hike to historic Kirkjubøur not only unlocks some of the country's best medieval history but also rewards with sweeping views over the southern islands of Koltur, Hestur & Sandur. Or perhaps you'll prefer to wander the charming harbor, filled with cafés, pubs and old warehouses, and simply gaze out at the sea while sipping a latte.

## Cruising

### CRUISING

Days 6 and 7

Say goodbye to the Faroes as we cruise toward the world's most northerly volcanic island, Jan Mayen. There are several activities to keep you engaged while at sea. Learn to identify seabirds gliding alongside your ship, attend dynamic presentations by your Expedition Team, relax in our polar library or simply spend some time on deck, admiring the ocean views. With your binoculars and camera at the ready, keep your eyes peeled for the blow of a humpback, blue or fin whale. Encounters with minke whales or orcas are also possible, since their curiosity can bring them near the ship. If you're lucky, you may even see harp seals.

## Cruising

### EXPLORING JAN MAYEN

Days 8 and 9

North of the Arctic Circle, about 280 miles (450 km) east of Greenland and 340 miles (550 km) north of Iceland, the mysterious Jan Mayen rises from the depths of the North Atlantic Ocean. Often shrouded in thick fog, the small mountainous island was declared a nature reserve in 2010 and is rarely visited, save for the 18 rotating personnel of the Norwegian military and Norwegian Meteorological Institute, who are the only year-long inhabitants, save for some additional personnel during the summer. Landing here will be dictated by the weather and sea. If conditions allow, as we approach, keep watch on deck as the spoon-shaped island's highest summit emerges. At 7,470 feet (2,277 meters) high, the breathtaking Beerenberg volcano features a symmetrical cone shape and impressive glaciers that spill into the sea. During the summer months, the island's lower landscape is covered with grass, moss and a smattering of hardy flowers that add a burst of color to the otherwise barren black lava terrain. One site we hope to visit is Olonkinbyen and the surrounding area. Named after Russian-Norwegian polar explorer Gennady Olonkin, it's the island's only settlement and the location of the meteorological station, where you may have the chance to learn about polar research while seeing how weather is monitored at the top of the world. Another option might be the black sand beach at Kvalrossbukta, where the remnants of a 17th-century Dutch whaling station and a large northern fulmar colony can be found. In 1632, two Basque ships landed at the small bay and plundered the station. A Dutch party was sent here the following year to protect the land stations during winter, but all seven men perished from scurvy. Whaling in the area came to an end about 20 years later. If conditions permit, we may view the volcano and the stratified cliffs of the spectacular north coast as we Zodiac cruise around the island, searching for wildlife. Designated an Important Bird Area by BirdLife International for the large numbers of breeding seabirds, Jan Mayen supports colonies of northern fulmars, little auks, glaucous gulls, kittiwakes, and black and Brünnich's guillemots (thick-billed murre). And if we are fortunate, you might see "sea parrots," the Atlantic puffin again. The waters here are rich feeding grounds for marine life, so keep a lookout for minke, fin, blue or humpback whales.

## Cruising

### CRUISING

Day 10

As we sail farther north, spend some time with your shipmates in the lounge, swapping stories and photos, or take the opportunity to learn about the regions travelled with your experienced and knowledgeable Expedition Team.

## Cruising

### EXPLORING SPITSBERGEN, SVALBARD

Days 11 to 13

Rugged, wild and situated entirely within the Arctic Circle, the largest island of the Svalbard archipelago is unforgettable. From immense glaciers to lush tundra to polar deserts, the landscape here is as varied as the wildlife. As we explore the fjords of the southwestern corner of this magical island, it won't take long for you to see firsthand why Spitsbergen is the "wildlife capital of the Arctic." Some areas we hope to visit include Hornsund and Bellsund fjords and Hornbreen Glacier. The possible landing sites at Hornsund, the island's most southerly fjord, have rich histories. You may visit Isbjornhamna, a bay at the entrance of the fjord, where we hope to explore colonies of delightful little auks. You may also spot Svalbard reindeer and hike to a viewpoint for views of calving glaciers. A 12-mile (20 km) long sound, Bellsund lured miners a century ago to its natural resources. Today, visitors come to Bourbonhamna and Calypsobyen to see historic mining and trapper sites and marvel at the magnificent vistas. It may also be possible to hike along the colorful tundra, dotted with flowers bursting for a taste of sunshine, and discover old whale bones.

## Longyearbyen, SJ

### DISEMBARK IN LONGYEARBYEN AND FLY TO HELSINKI

Day 14

The time has come to say farewell to your newfound friends and Expedition Team. After disembarking, spend the day exploring the frontier-style settlement of Longyearbyen before catching the charter flight to Helsinki.

## Longyearbyen, SJ

### ONWARD FLIGHT HOME

Day 15

After breakfast, you can make your way to the airport for your onward flight home, or stay to explore Finland's culturally-rich capital on your own if you've made prior arrangements.

#### **Im Preis inbegriffen**

- Führung während der gesamten Reise durch unsere erfahrenen Expeditionsleiter, einschließlich Landgängen und anderen Aktivitäten
- Alle Zodiac-Transfers und Fahrten gemäß dem Tagesprogramm
- Alle Landgänge gemäß dem Tagesprogramm
- Unterkunft an Bord mit täglichem Housekeeping
- Alle Mahlzeiten, Snacks, alkoholfreie Getränke und Säfte an Bord während der gesamten Reise (Bitte informieren Sie uns so weit wie möglich im Voraus über eventuelle Diätwünsche. Die Schiffskombüse kann leider keine koscheren Mahlzeiten zubereiten).
- Bier, Standardweine und -spirituosen sowie Cocktails während der Barservicezeiten und beim Abendessen; sowie Kaffee, Tee und Kakao rund um die Uhr verfügbar
- Jeder Gast kann sich mit jeweils einem Gerät beim Wi-Fi-Service des Schiffes anmelden. Dieser ergänzende Wi-Fi-Dienst ermöglicht grundlegendes Surfen im Internet, vorbehaltlich Satellitenempfang
- Formelle und informelle Präsentationen durch unser Expeditionsteam und Gastredner nach Plan
- Ein Fototagebuch zur Dokumentation der Expedition
- Ein Paar wasserdichte Expeditionsstiefel, die für Anlandungen und Zodiacfahrten ausgeliehen werden
- Ein offizieller Parka von Quark Expeditions zum Behalten
- Eine kostenlose wiederverwendbare Wasserflasche
- Haartrockner und Bademäntel in jeder Kabine
- Alle sonstigen Service-Steuern und Hafengebühren während des Programms
- Sämtliches Gepäckhandling an Bord des Schiffes
- Notfall-Evakuierungsversicherung für alle Passagiere bis zu einer maximalen Leistung von USD \$500.000 pro Person

#### **Nicht im Preis inbegriffen**

- Obligatorisches Transferpaket
- Internationale Flugkosten
- Transfers bei Ankunft und Abreise, außer wenn im obligatorischen Transferpaket aufgeführt
- Pass- und Visagebühren
- Staatliche Ankunfts- und Abflugsteuern, die nicht oben aufgeführt sind
- Mahlzeiten, sofern nicht anders angegeben
- Reisegepäck-, Reiserücktritts-, Reiseabbruch- und Reisekrankenversicherung – dringend empfohlen
- Übergepäckgebühren auf internationalen Flügen
- Obligatorische wasserdichte Hosen für Anlandungen und Zodiacfahrten oder andere nicht erwähnte Ausrüstung
- Wäscherei-, Bar-, Getränke- und andere persönliche Kosten, sofern nicht angegeben
- Telefon- und Internetgebühren
- Freiwilliges Trinkgeld am Ende der Reise für Schiffspersonal und Crew
- Zusätzliche Übernachtungen
- Abenteueroptionen, die nicht in den inkludierten Aktivitäten aufgeführt sind

*Ihr Schiff*

*Ihr Schiff ist die "Ocean Explorer". Ausführlich stellen wir Ihnen dieses Schiff auf unseren Schiffseiten vor. Ausführliche Informationen zu diesem Schiff.*

Passagiere  
**138**

Bordsprachen  


Eisklasse  
**PC-6**

Special  
**X-Bow**

