

IHRE REISE

*Abenteuer Antarktis, Südgeorgien
 und Falklandinseln*

Reisetermin

28.02.2025 - 22.03.2025

Reisedauer

23 Tage

Reederei / Schiff

Scenic Eclipse / SCENIC Luxury Cruises & Tours



Scenic Eclipse Deluxe Veranda Suite BA, Deck 7



Doppelbelegung



€25.295

pro Person

Einzelbelegung



€52.900

pro Person

Scenic Eclipse Veranda Suite C, Deck 6



Doppelbelegung



€25.295

pro Person

Einzelbelegung



€49.960

pro Person

Scenic Eclipse Deluxe Veranda Suite AA, Deck 7



Doppelbelegung



€27.295

pro Person

Einzelbelegung



€53.960

pro Person

Scenic Eclipse Grand Deluxe Veranda Suite CD, Deck 6



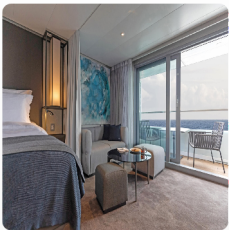
Doppelbelegung


€ 30.965
 pro Person

Einzelbelegung


€ 61.300
 pro Person

Scenic Eclipse Grand Deluxe Veranda Suite BD, Deck 7



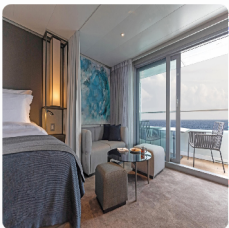
Doppelbelegung


€ 32.330
 pro Person

Einzelbelegung


€ 66.530
 pro Person

Scenic Eclipse Grand Deluxe Veranda Suite AD, Deck 8



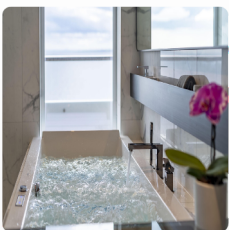
Doppelbelegung


€ 33.275
 pro Person

Einzelbelegung


€ 65.920
 pro Person

Scenic Eclipse Spa Suite SA, Deck 9



Doppelbelegung


€ 35.395
 pro Person

Einzelbelegung


€ 60.160
 pro Person

Scenic Eclipse Spa Suite SB, Deck 9



Doppelbelegung


€35.920
 pro Person

Einzelbelegung


€71.210
 pro Person

Scenic Eclipse Grand Panorama Suite GP, Deck 6



Doppelbelegung


€64.985
 pro Person

Einzelbelegung


€129.340
 pro Person

Scenic Eclipse Owners Penthouse Suite OP, Deck 9



Doppelbelegung


€72.020
 pro Person

Einzelbelegung


€143.410
 pro Person


Scenic Eclipse Deluxe Veranda Suite CA, Deck 6



Doppelbelegung


 Nicht verfügbar

Einzelbelegung


 Nicht verfügbar

Scenic Eclipse Veranda Suite A, Deck 8



Doppelbelegung



Nicht verfügbar

Einzelbelegung



Nicht verfügbar

Scenic Eclipse Veranda Suite B, Deck 7



Doppelbelegung



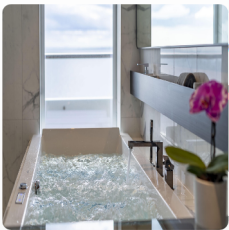
Nicht verfügbar

Einzelbelegung



Nicht verfügbar

Scenic Eclipse Spa Suite S, Deck 8



Doppelbelegung



Nicht verfügbar

Einzelbelegung



Nicht verfügbar

Scenic Eclipse Deluxe Veranda Suite DA, Deck 5



Doppelbelegung



Nicht verfügbar

Einzelbelegung



Nicht verfügbar

Scenic Eclipse Veranda Suite D, Deck 5



Doppelbelegung



Nicht verfügbar

Einzelbelegung



Nicht verfügbar

Scenic Eclipse Panorama Suite P, Deck 8



Doppelbelegung



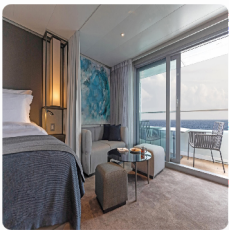
Nicht verfügbar

Einzelbelegung



Nicht verfügbar

Scenic Eclipse Grand Deluxe Veranda Suite DD, Deck 5



Doppelbelegung



Nicht verfügbar

Einzelbelegung



Nicht verfügbar

Scenic Eclipse Deluxe Veranda Suite DB, Deck 5



Doppelbelegung



Nicht verfügbar

Einzelbelegung



Nicht verfügbar

Scenic Eclipse Two-Bedroom Penthouse Suite TP, Deck 9



Doppelbelegung



Nicht verfügbar

Einzelbelegung



Nicht verfügbar



Buenos Aires, Argentina

Tag 1

Welcome to Buenos Aires, where you'll have an overnight hotel stay. Perhaps spend some time in the city, nicknamed the 'Paris of South America'. Resplendent with Belle Epoque buildings, sidewalk cafes and green spaces, there's the fiery passion of Latin America – a collective love for football, flame-cooked meats (asado) and the tango.

Highlights include La Boca, a colourful, creative mecca with a must-do art walk, and San Telmo, a former aristocratic neighbourhood that was abandoned during a 19th-century epidemic. Mansions were turned into conventillos (shared housing), boutique hotels, antique shops, and tango clubs, exuding a captivating bohemian vibe.

Buenos Aires > Ushuaia

Tag 2

Today you will take an included flight from Buenos Aires to Ushuaia, the southernmost city in the world. The Captain and crew will warmly greet you as you board your ultra-luxury Discovery Yacht.

Toast the start of your once-in-a-lifetime expedition as you depart South America and cruise through the calm and scenic Beagle Channel, named so for the ship that carried Charles Darwin on his five-year discovery journey. Admire the dramatic views of the Andean mountains from the comfort of your private verandah or from the Observation Deck with its commanding view of the bow.

At sea

Tag 3

Wake up in your own time as we cruise across the Drake Passage, the infamous waterway that connects South America to Antarctica. Perhaps ask your butler for breakfast in your spacious suite or meet fellow guests in the Yacht Club.

Today, join an introductory presentation by the Discovery Team in the state-of-the-art theatre. Feel the excitement building as they explain how your Zodiac and other Discovery Excursions will work in the coming days. The theatre is where you can watch talks, movies, world-class productions from musical theatre and cabaret to pop music, dance and fun interactive game shows.

Antarctica

Tag 4

Arriving in Antarctica for the first time is unlike anything you have experienced before. Due to the extraordinary nature of the region, your itinerary is open and dependent on the ice and weather conditions.

We may have the opportunity to visit Deception Island, one of the only places in the world that ships can sail to the centre of a submerged caldera of an active volcano. Another highlight is Brown Bluff, a stunning ice-capped volcanic cliff. Additionally, you could take a Zodiac cruise past the breathtaking Devil Island or go ashore at Telefon Bay to see penguins, seabirds and seals.

Discovery: Explore by Zodiac, kayak or stand-up paddleboard with possible shore landings (weather and ice permitting). To see Antarctica from above or below the horizon book a helicopter[^] or a submersible[^] experience.

Antarctica

Tag 5

At the heart of your Antarctic voyage is the Discovery Team of up to 20 leading polar experts with diverse qualifications, from science to geology, botany, history, photography, marine biology and glaciology. They will answer your most curious questions and be with you throughout every moment of your journey.

Your experienced Captain and the team will use their expertise to design your voyage from day to day, making the most of 18–20 hours of daylight.

Discovery: Explore by Zodiac, kayak or stand-up paddleboard with possible shore landings (weather and ice permitting). To see Antarctica from above or below the horizon book a helicopter[^] or a submersible[^] experience.

Antarctica

Tag 6

Awake this morning in an unpredictable and stunningly beautiful environment that always finds a way to surprise you. Step out onto your private verandah and see icebergs towering out of the ocean thousands of metres tall.

Remarkable wildlife encounters await during your time in Antarctica. Going ashore to visit a penguin colony is an unforgettable experience. Watch the sea for humpback, blue, fin and minke whales, as well as the distinctive black and white orcas.

Discovery: Explore by Zodiac, kayak or stand-up paddleboard with possible shore landings (weather and ice permitting). To see Antarctica from above or below the horizon book a helicopter[^] or a submersible[^] experience.

Antarctica

Around 12 million penguins live on the Antarctic Peninsula, including Adélie, Chinstrap, Gentoo, and the very rare Emperor penguins. Guided by the expert polar Discovery Team, you'll witness colonies up close; hear their mighty calls and watch as they clumsily waddle along and interact with each other.

Tag 7

Whales are another majestic creature you may encounter, whether a minke, a humpback or an Orca. Watch them from the comfort of your ultra-luxury Discovery Yacht, in a Zodiac with an expert Discovery Team member, or from their level in a kayak or stand-up paddleboard – a breathtaking experience.

Discovery: Explore by Zodiac, kayak or stand-up paddleboard with possible shore landings (weather and ice permitting). To see Antarctica from above or below the horizon book a helicopter[^] or a submersible[^] experience.

Antarctica

For many, the polar plunge is a once in a lifetime opportunity and a rite of passage for an expedition to Antarctica. Once throughout your voyage, the marina will be set up for the brave people who want to jump into the freezing Antarctic waters. Invigorating, exciting, and surprisingly refreshing.

Tag 8

If you choose to skip the polar plunge, make sure you find a good viewing location as you feel the chills of everyone coming out of the water. Join them for a cup of hot chocolate or toast with a glass of whiskey.

Discovery: Explore by Zodiac, kayak or stand-up paddleboard with possible shore landings (weather and ice permitting). To see Antarctica from above or below the horizon book a helicopter[^] or a submersible[^] experience.

Antarctica

There are endless ways to experience Antarctica. You may be on your Discovery Yacht watching from the comfort of the Observation Lounge, on a Zodiac excursion or immersed in the environment on a kayak or stand-up paddleboard. Walking across the rocky beaches or crunching through the snow, you'll be awed by the dramatic landscapes and unique wildlife that can only be found at the edge of the earth.

Tag 9

Discovery: Explore by Zodiac, kayak or stand-up paddleboard with possible shore landings (weather and ice permitting). To see Antarctica from above or below the horizon book a helicopter[^] or a submersible[^] experience.

At sea

A fresh beverage delivered to your door by your butler will help start your day. Head to the gym for an invigorating workout or the studio for a Pilates class, some guided stretching or aerial yoga. You may wish to book a treatment[#] at the tranquil Senses Spa. Perhaps an ESPA facial, massage or an alternative therapy including Ayurvedic massage.

Tag 10

In the evening, settle in at the spacious Scenic Lounge Bar to enjoy your beverage of choice. With Scenic's signature all-inclusive ultra-luxury philosophy, indulge in top shelf spirits, over 130 whiskeys, a premium wine list and French champagne.

At sea

As you cruise towards South Georgia relax in the Observation Lounge and watch the world float by through Swarovski telescopes. The Discovery Team will help you prepare for your first landing on the White Continent, offering insight and inspiration as well as giving you practical information about your upcoming polar expedition.

Tag 11

Choose one of up to 10 dining experiences and spend time with newly made friends – enjoy a casual lunch at Azure Bar & Café and an elegant dinner at Elements. At night, enjoy a performance in the state-of-the-art theatre before you retreat to your ultra-luxury suite with a nightcap.

South Georgia

Your next few days in South Georgia will reveal its striking landscapes, abundant wildlife and fascinating human legacy.

Tag 12

In the coming days you may land at Fortuna Bay, home to King Penguins, Antarctic fur seals, elephant seals, brown skuas, giant petrels and Antarctic terns. At the settlement of Grytviken you can see the rusting remnants of an old whaling station. Other potential landing sites include Saint Andrews Bay, known for its huge breeding colony of King penguins, and Gold Harbour, a dramatic bay with abundant King penguins and elephant seals.

Discovery: Explore by Zodiac, kayak or stand-up paddleboard with possible shore landings (weather and ice permitting). To further discover South Georgia book a submersible^ experience.

South Georgia

Tag 13

Prepare to be amazed by the abundant wildlife that calls this island home. From the majestic presence of thousands of King penguins to the sight of elephant seals and male fur seals staking their claim on the beaches, every moment promises unforgettable memories. The Discovery Team will share their knowledge of the remarkable creatures that live here and explain how important the landscape is for the breeding and survival of different species on the island.

Discovery: Explore by Zodiac, kayak or stand-up paddleboard with possible shore landings (weather and ice permitting).

South Georgia

Tag 14

Pay your respects to the renowned explorer Sir Ernest Shackleton at his final resting place in the settlement of Grytviken.

Keep your camera ready as you explore South Georgia. With its breathtaking landscapes, vast colonies of wildlife and adorable seal pups, the island could provide some of the best photographs of your voyage.

Back on board, explore some of the indulgent spaces, from the welcoming Observation Lounge to the expansive Senses Spa#. Soothe your muscles in the sauna or heated therapy lounge, join a yoga or Pilates class. Choose one of up to 10 world-class on board dining experiences tonight.

Discovery: Explore by Zodiac, kayak or stand-up paddleboard with possible shore landings (weather and ice permitting). To further discover South Georgia book a submersible^ experience.

South Georgia

Tag 15

Enjoy one more day exploring the awe-inspiring beauty of South Georgia, where nature's grandeur unfolds in dramatic landscapes unlike anywhere else. Picture yourself amidst a mountainous island rising majestically from the sea, adorned with pristine snow and glistening glaciers.

Discovery: When enjoying daily Discovery excursions, ask for your expert polar Discovery Leader for photography tips and guidance on how to spot the wildlife around you. They will help you immortalise these incredible moments while cruising on the Zodiacs, kayaking and stand-up paddleboarding around impressive ice formations.

At sea

Tag 16

Take a moment to yourself this morning in your luxurious suite. Sleep in and ask your butler to bring you a late breakfast.

Be sure to visit the bridge today. Learn more about the technical abilities of The World's First Discovery Yacht and see it in full operation. The bridge is also one of the best viewing areas on the ship.

Strike up an insightful conversation with one of our Discovery Team members after an educational lecture in the state-of-the-art theatre. Recap the incredible things you've seen on South Georgia Island as they share their passion for science and exploration.

At sea

Tag 17

Today is yours to spend exactly as you wish. You might ask the butler for breakfast in bed or wish to spend a quiet morning on your verandah with a book, surrounded by the serenity of the ocean.

Make sure you book a treatment# at the tranquil Senses Spa before your voyage ends. Perhaps an ESPA facial or an alternative therapy including Ayurvedic massage or Japanese shiatsu. Afterwards, hold on to that feeling of calm for a while longer in the Zen-like space of the Salt Therapy Lounge.

Falkland Island

Considered one of the wonders of the far Southern Hemisphere, the Falkland Islands overflow with natural beauty. The windswept green hills and clear waters lapping the white sand beaches could be mistaken for a much more tropical location.

Over the following days, explore these spectacular islands. You may call at the historic capital, Stanley, which has a distinctly British feel, right down to its cosy pubs and elegant Christ Church Cathedral. West Point Island is another potential landing site, famed for its vast cliffside colony of black-browed albatross, as is Rookery Point, home to thousands of breeding pairs of penguins.

Freechoice:

Tag 18

Walk Port Stanley: Tour the small capital with an expert guide for a closer look at the Islanders' daily life.

Battlefields a Mountain Perspective: Visit the key sites of the Falklands War on a Battlefields Tour, delving into the events that led up to the 1982 conflict.

Stanley Highlights: This tour by coach offers a thorough introduction to the town's key sights and historical landmarks.

Fitz Roy Farm Tour: Start at the Jetty Visitor Centre with a brief history of the Falklands, then continue to the shearing shed for a live shearing demonstration and visit the Farm Manager's House.

Discovery: Explore by Zodiac, kayak or stand-up paddleboard with possible shore landings (weather and ice permitting). To see the Falkland Islands from above or below the horizon book a helicopter^ or submersible^ experience.

Falkland Island

Tag 19

These remote and sparsely populated islands are a wildlife lover's paradise. The world's largest population of Gentoo penguins is found here, in addition to King, Magellanic and Rockhopper penguins, and vast numbers of shearwaters and petrels. Fur and elephant seals roam sandy beaches, while the surrounding waters are home to whales and dolphins.

You will also learn about their fascinating and tumultuous history. Since the 18th century, ownership of the Falkland Islands has been contested between France, Britain, Spain and Argentina. Following the Falklands War of 1982, the islands have been part of the British Commonwealth.

Discovery: Explore by Zodiac, kayak or stand-up paddleboard with possible shore landings (weather and ice permitting). To see the Falkland Islands from above or below the horizon book a helicopter^ or submersible^ experience.

At sea

Tag 20

Today, sample some of the extraordinary dining experiences on your ultra-luxury Discovery Yacht. Start with breakfast at the Yacht Club. For lunch, Azure Bar & Café serves light meals, pizza and salads that are available for grazing throughout the day. In the evening, dine around the world with Asian fare at Sushi* @ Koko's or Night Market* @ Koko's or indulge in fine French dining at Lumière*.

The state-of-the-art theatre on Deck 4 is the hub for on board entertainment. During the day, the theatre hosts talks and lectures from the Discovery Team. At night, enjoy world-class productions from musical theatre and cabaret to pop music, dance and fun interactive game shows.

At sea

Tag 21

After days of enriching discoveries, this morning it's time to reflect on your journey. Ask the butler to bring your morning coffee, then gather your new friends for a gym session in the state-of-the art POWER: gym. Enjoy lunch together, where you can share photos and travel experiences as you recall your favourite memories from these awe-inspiring weeks on the sea traversing continents.

Later tonight, raise a glass to an unforgettable voyage at one of the up to nine bars and lounges across the ship.

At sea

Tag 22

This is your final day, so take the time to return to your favourite spots. That might mean one last session in the Salt Therapy Lounge or stretch out your sea legs in a Pilates class.

Return to your favourite restaurant with your new friends or indulge in a private dinner in your verandah. Enjoy a nightcap in one of the bars and lounges.

Buenos Aires

Your voyage ends this morning as you farewell the crew and fellow guests. Disembark after breakfast in Buenos Aires, Argentina where your journey concludes, taking away memories of a truly unforgettable experience.

Please book your flight to depart out of Buenos Aires after 12:00 PM.

Tag 23

^Flights on board our two helicopters and submersible experiences are at additional cost, subject to regulatory approval, availability, weight restrictions, medical approval and weather, ice and tidal conditions. Helicopter not available in South Georgia. #Spa treatments at additional cost. +All drinks on board, including those stocked in your mini bar, are included, except for a very small number of rare, fine and vintage wines, Champagnes and spirits. *Specialty restaurants require a reservation, enquire on board.

The itinerary is a guide only and may be amended for operational reasons. As such Scenic cannot guarantee the voyage will operate unaltered from the itinerary stated above. Locations listed within South Georgia, Falkland Islands and Antarctica are subject to weather and operational conditions. Sightings cannot be guaranteed. Please refer to our terms and conditions for further information.

Im Preis inbegriffen

- Services und Annehmlichkeiten an Bord
- Maximal 229 Gäste an Bord(200 in den Polarregionen)
- Großzügige Suiten mit privater Veranda2:1-Verhältnis
- Gäste- und Butlerservice für jeden Gast
- Zehn kulinarische Erlebnisse in neun Gourmet-Menues – von gemütlicher Atmosphäre bis zum eleganten Fine Dining
- Auswahl an Premium-Markengetränken mit über 101 Whiskysorten
- Scenic Discovery Ausflüge mit dem Zodiac
- Komplettes Kajakprogramm und Stand-up-Paddle-Boarding
- Kostenloser Expeditionsparaka und Wasserflasche sowie die Nutzung von speziellen Polartiefeln
- Interessantes Vortrags- und Bildungsprogramm mit Experten an Bord
- Spezielle Observation Lounge und Terrasse für die beste Aussicht
- Swarovski-Teleskope an Deck sowie Ferngläser in der Suite, damit Sie keinen aufregenden Momente verpassen
- Senses Spa**auf 551 m2 mit Fitnesscenter, Yoga- und Pilatesstudio
- Außen-Vitalpools nachskandinavischem Vorbild
- Modernes Theater mittäglichem Unterhaltungs- und Bildungsangebot
- WLAN inclusive
- Inlandsflüge inkl. Gebühren
- Flughafentransfers
- Trinkgelder an Bord und an Land

Nicht im Preis inbegriffen

- Internationale Flüge, sofern nicht angegeben
- Reiseversicherungen
- Visa- oder Passgebühren (falls erforderlich)
- persönliche Ausgaben (Einkäufe, optionale Ausflüge)
- sonstige im Programm nicht genannte Leistungen

Ihr Schiff

Ihr Schiff ist die "Scenic Eclipse". Ausführlich stellen wir Ihnen dieses Schiff auf unseren Schiffseiten vor. [Ausführliche Informationen zu diesem Schiff.](#)

Passagiere
199

Bordsprachen


Eisklasse
PC-6

Special
Helikopter

