

IHRE REISE

*Abenteuer Antarktis, Südgeorgien
 und Falklandinseln*

Reisetermin
 22.10.2025 - 12.11.2025

Reisedauer
 22 Tage

Reederei / Schiff
 Scenic Eclipse / SCENIC Luxury Cruises & Tours



Scenic Eclipse Veranda Suite A, Deck 8



Doppelbelegung


€22.695
 pro Person

Einzelbelegung


€44.835
 pro Person

Scenic Eclipse Deluxe Veranda Suite CA, Deck 6



Doppelbelegung


€24.595
 pro Person

Einzelbelegung


€48.635
 pro Person

Scenic Eclipse Deluxe Veranda Suite DB, Deck 5



Doppelbelegung


€24.595
 pro Person

Einzelbelegung


€48.635
 pro Person

Scenic Eclipse Deluxe Veranda Suite DA, Deck 5



Doppelbelegung


€24.595
 pro Person

Einzelbelegung


€48.635
 pro Person

Scenic Eclipse Deluxe Veranda Suite AA, Deck 7



Doppelbelegung


€26.495
 pro Person

Einzelbelegung


€52.435
 pro Person

Scenic Eclipse Deluxe Veranda Suite BA, Deck 7



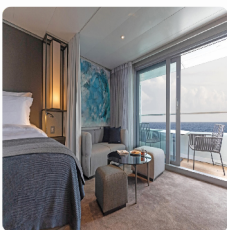
Doppelbelegung


€26.495
 pro Person

Einzelbelegung


€52.435
 pro Person

Scenic Eclipse Grand Deluxe Veranda Suite AD, Deck 8



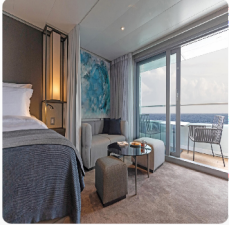
Doppelbelegung


€27.750
 pro Person

Einzelbelegung


€54.945
 pro Person

Scenic Eclipse Grand Deluxe Veranda Suite BD, Deck 7



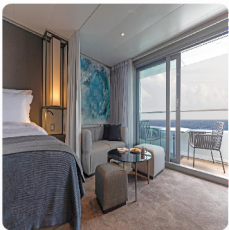
Doppelbelegung


€27.750
 pro Person

Einzelbelegung


€54.945
 pro Person

Scenic Eclipse Grand Deluxe Veranda Suite DD, Deck 5



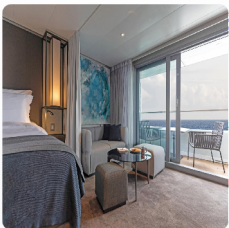
Doppelbelegung


€27.750
 pro Person

Einzelbelegung


€54.945
 pro Person

Scenic Eclipse Grand Deluxe Veranda Suite CD, Deck 6



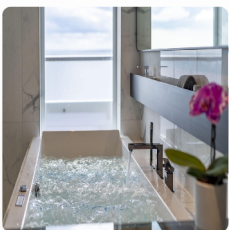
Doppelbelegung


€27.750
 pro Person

Einzelbelegung


€54.945
 pro Person

Scenic Eclipse Spa Suite SB, Deck 9



Doppelbelegung


€33.650
 pro Person

Einzelbelegung


€66.745
 pro Person

Scenic Eclipse Spa Suite SA, Deck 9



Doppelbelegung


€33.650
 pro Person

Einzelbelegung


€66.745
 pro Person

Scenic Eclipse Grand Panorama Suite GP, Deck 6



Doppelbelegung


€62.975
 pro Person

Einzelbelegung


€127.915
 pro Person

Scenic Eclipse Owners Penthouse Suite OP, Deck 9



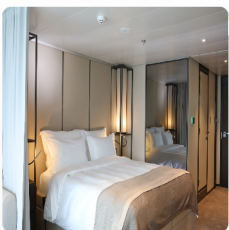
Doppelbelegung


€71.270
 pro Person

Einzelbelegung


€141.985
 pro Person

Scenic Eclipse Veranda Suite B, Deck 7



Doppelbelegung


 Nicht verfügbar

Einzelbelegung


 Nicht verfügbar

Scenic Eclipse Veranda Suite C, Deck 6



Doppelbelegung



Nicht verfügbar

Einzelbelegung



Nicht verfügbar

Scenic Eclipse Panorama Suite P, Deck 8



Doppelbelegung



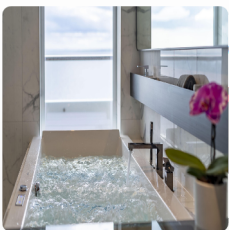
Nicht verfügbar

Einzelbelegung



Nicht verfügbar

Scenic Eclipse Spa Suite S, Deck 8



Doppelbelegung



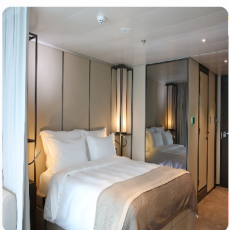
Nicht verfügbar

Einzelbelegung



Nicht verfügbar

Scenic Eclipse Veranda Suite D, Deck 5



Doppelbelegung



Nicht verfügbar

Einzelbelegung



Nicht verfügbar

Scenic Eclipse Two-Bedroom Penthouse Suite TP, Deck 9



Doppelbelegung



Nicht verfügbar

Einzelbelegung



Nicht verfügbar



Buenos Aires, Argentina

Latin passion and European romance define the beautiful Argentina's capital, Buenos Aires, a dynamic city known for its wide-ranging architectural styles, contemporary and historical arts, and culinary experiences.

Tag 1

Seamlessly transfer to the cruise terminal in Buenos Aires where your journey into wonder begins with a warm greeting from the Captain and crew as you board your Scenic Discovery Yacht. Sip on a glass of Champagne and explore your luxurious suite, then join your fellow guests at the Sky Bar to toast the start of an unforgettable voyage.

Please book your flight to arrive into Buenos Aires prior to 02:00 PM.

At sea

- Tag 2
- Wake up in your own time as we cruise across the Drake Passage, the infamous waterway that connects South America to Antarctica. Perhaps ask your butler for breakfast to be delivered to your spacious suite or meet fellow guests in the Yacht Club.
- Today, join an introductory presentation about your polar expedition by the polar Discovery Team in the state-of-the-art theatre. Feel the excitement building as they explain how your Zodiac and other Discovery Excursions will work in the coming days. The theatre is where you can watch talks, lectures, movies and documentaries during the day. At night, enjoy world-class productions from musical theatre and cabaret to pop music, dance and fun interactive game shows.

At sea

- Tag 3
- Make yourself at home on board and settle in at the spacious Scenic Lounge Bar with your beverage of choice. Curl up with a coffee in the quiet of the Observation Lounge and Library or enjoy a day of indulgence in the Senses Spa#.
- Join one of the Discovery Team's daily lectures and discussions, covering everything from Antarctica's history and polar exploration to glaciology, wildlife, climate change and more.

At sea

- Tag 4
- As you cruise south, wildlife spotting opportunities abound. Your expert Discovery Team will be with you out on the deck looking for albatrosses, prions, and petrels that follow the ship. Use the complimentary binoculars you'll find in your suite or head to the Swarovski telescopes on the Observation Terrace.
- Check the daily program for the Discovery Team lectures held in the state-of-the-art on board theatre.

Falkland Islands

- Tag 5
- Considered one of the wonders of the far Southern Hemisphere, the Falkland Islands overflow with natural beauty. The windswept green hills and clear waters lapping the white sand beaches could be mistaken for a much more tropical location.
- Over the next few days, you will explore these spectacular islands. You may call at the historic capital, Stanley, which has a distinctly British feel, right down to its cosy pubs and elegant Christ Church Cathedral. West Point Island is another potential landing site, famed for its vast cliffside colony of black-browed albatross, as is Rookery Point, home to thousands of breeding pairs of penguins.
- Discovery:** Explore by Zodiac, kayak or stand-up paddleboard with possible shore landings (weather and ice permitting). To see the Falkland Islands from above or below the horizon book a helicopter^{*} or submersible^{*} experience.

Falkland Islands

- Tag 6
- These remote and sparsely populated islands are a wildlife lover's paradise. The world's largest population of Gentoo penguins is found here, in addition to King, Magellanic and Rockhopper penguins, and vast numbers of shearwaters and petrels. Fur and elephant seals roam sandy beaches, while the surrounding waters are home to whales and dolphins.
- You will also learn about their fascinating and tumultuous history. Since the 18th century, ownership of the Falkland Islands has been contested between France, Britain, Spain and Argentina. Following the Falklands War of 1982, the islands have been part of the British Commonwealth.
- Discovery:** Explore by Zodiac, kayak or stand-up paddleboard with possible shore landings (weather and ice permitting). To see the Falkland Islands from above or below the horizon book a helicopter^{*} or submersible^{*} experience.

At sea

Tag 7

Today, sample some of the extraordinary dining experiences on your ultra-luxury Discovery Yacht. Start with breakfast at the Yacht Club. For lunch, Azure Bar & Café serves light meals, pizza and salads that are available for grazing throughout the day. In the evening, dine around the world with Asian fare at Sushi* @ Koko's or Night Market* @ Koko's or indulge in fine French dining at Lumière*.

The Discovery Team will also be back in the theatre with more fascinating talks on the upcoming stops – check your daily program for details.

At sea

Tag 8

Sailing towards South Georgia gives you time to slow to the rhythm of the sea. Enjoy your time to relax and spot the many seabirds you'll encounter on your way. You may decide to join the avid whale watchers on the Observation Terrace. Alternatively, retreat to the tranquillity of the Senses Spa# to recharge your body and mind before a busy few days on shore.

The Discovery Team will be on hand to share their wildlife spotting tips. Join an insightful lecture to learn more about your next port of call, the remarkable South Georgia.

South Georgia

After arriving in the morning, your next few days in South Georgia will introduce you to its striking landscapes, abundant wildlife and fascinating human legacy.

Tag 9

In the coming days you may land at Fortuna Bay, home to King Penguins, Antarctic fur seals, elephant seals, brown skuas, giant petrels and Antarctic terns. At the settlement of Grytviken you can pay your respects at the grave of explorer Sir Ernest Shackleton and see the rusting remnants of an old whaling station. Other potential landing sites include Saint Andrews Bay, known for its huge breeding colony of King penguins, and Gold Harbour, a dramatic bay with abundant King penguins and elephant seals.

Discovery: Explore by Zodiac, kayak or stand-up paddleboard with possible shore landings (weather and ice permitting). To further discover South Georgia book a submersible^ experience.

South Georgia

Tag 10

Keep your cameras at the ready as you explore South Georgia. With breathtaking landscapes, vast colonies of wildlife and adorable seal pups exploring their new world, the island could provide some incredible photographs. At the settlement of Grytviken, pay your respects at the grave of explorer Sir Ernest Shackleton and see the rusting remnants of an old whaling station.

Back on board, explore some of your Discovery Yacht's indulgent spaces, from the welcoming Observation Lounge to the expansive Senses Spa#. Soothe your muscles in the sauna or heated therapy lounge. Enjoy up to 10 world-class on board dining experiences tonight.

Discovery: Explore by Zodiac, kayak, or stand-up paddleboard with possible shore landings for walks along the beaches and hikes to the historical areas (weather and ice permitting). To further discover South Georgia book a submersible^ experience.

South Georgia

Tag 11

Prepare to be amazed by the abundant wildlife that calls this island home. From the majestic presence of thousands of King penguins to the sight of elephant seals and male fur seals staking their claim on the beaches, every moment promises unforgettable memories. The Discovery Team will share their knowledge of the remarkable creatures that live here and explain how important the landscape is for the breeding and survival of different species on the island.

Discovery: Explore by Zodiac, kayak or stand-up paddleboard with possible shore landings (weather and ice permitting).

South Georgia

Tag 12

Enjoy one more day exploring the awe-inspiring beauty of South Georgia, where nature's grandeur unfolds in dramatic landscapes unlike anywhere else. Picture yourself amidst a mountainous island rising majestically from the sea, adorned with pristine snow and glistening glaciers.

Discovery: When enjoying daily Scenic Discovery excursions, ask for your expert Polar Discovery Leader for photography tips and guidance on how to spot the wildlife around you. They will help you immortalise these incredible moments while cruising on the Zodiacs, kayaking and stand-up paddleboarding around impressive ice formations.

At sea

Tag 13

After days of exploration, take a moment to yourself this morning in your luxuriously appointed suite. Enjoy a well-deserved sleep in and ask your butler to bring you a late breakfast and a barista-made coffee.

If you haven't had time to visit the bridge yet, be sure to do so today. Learn more about the technical abilities of The World's First Discovery Yacht and see it in full operation. The bridge is also one of the best viewing areas on the ship.

Then delve into an insightful conversation with one of our Discovery Team members after an educational lecture in the state-of-the-art theatre. Recap the incredible things you've seen on South Georgia Island, from the dramatic landscapes to abundant wildlife, as they share their passion for science and exploration.

At sea

Tag 14

Today, search for icebergs as you enter Antarctic waters. Put on your complimentary polar parka and head out on the Observation Deck to watch for seabirds, such as the wandering albatross, shearwaters, giant petrels and more. Alternatively, look for the blow of a whale in the distance. Get ready to be amazed by the stunning display of colossal tabular icebergs as you cruise through the renowned Antarctic Sound.

The Discovery Team will help you prepare for your first landing on the White Continent, offering insight and inspiration as well as giving you practical information about your upcoming polar expedition.

Antarctica

Tag 15

Arriving in Antarctica for the first time is unlike anything you have experienced before. Due to the extraordinary nature of the region, your itinerary is open and dependent on the ice and weather conditions.

During your voyage we may have the opportunity to visit various locations over the following days. Such as visit Deception Island, one of the only places in the world that ships can sail directly into the centre of a submerged caldera of an active volcano. Another highlight is Brown Bluff, a stunning ice-capped volcanic cliff towering above a large Adelie penguin rookery. Additionally, you could take a Zodiac cruise past the breathtaking Devil Island or go ashore at Telefon Bay to see penguins, seabirds and seals.

Before dinner, head to the theatre for the Discovery Team recap to learn about our next potential destination on the White Continent.

Discovery: Explore by Zodiac, kayak or stand-up paddleboard with possible shore landings (weather and ice permitting). To see Antarctica from above or below the horizon book a helicopter[^] or a submersible[^] experience.

Antarctica

At the heart of your Antarctic voyage is the Discovery Team of up to 20 leading polar experts with diverse qualifications, from science to geology, botany, history, photography, marine biology and glaciology. They will answer your most curious questions and be with you throughout every moment of your journey.

Tag 16

For a truly unique and exclusive experience, add a helicopter excursion[^] to visit Snow Hill Island, one of only two Emperor penguin colonies of its kind in the Peninsula. Departing by helicopter from your Discovery Yacht in the Weddell Sea, you'll land on Snow Hill Island and walk 1.5 kilometres with your Discovery Team to see the colony. The Emperor penguins are only present at this location at the start of the Antarctica season and there are only a couple of voyages with this experience.

Discovery: Explore by Zodiac, kayak or stand-up paddleboard with possible shore landings (weather and ice permitting). To see Antarctica from above or below the horizon book a helicopter[^] or a submersible[^] experience.

Antarctica

Awake this morning in a unpredictable and stunningly beautiful environment that always finds a way to surprise you. Step out onto your private verandah and see icebergs towering out of the ocean thousands of metres tall.

Tag 17

Remarkable wildlife encounters await during your time in Antarctica. Going ashore to visit a penguin colony is an unforgettable experience. Watch the sea for humpback, blue, fin and minke whales, as well as the distinctive black and white orcas.

Discovery: Explore by Zodiac, kayak or stand-up paddleboard with possible shore landings (weather and ice permitting). To see Antarctica from above or below the horizon book a helicopter[^] or a submersible[^] experience.

Antarctica

Be sure to pack your swimming costume, because you could be going for a swim. For many, the polar plunge is a once in a lifetime opportunity and a rite of passage for an expedition to Antarctica. Once throughout your voyage, the marina will be set up for the brave people who want to jump into the freezing Antarctic waters. Invigorating, exciting, and surprisingly refreshing.

Tag 18

If you choose to skip the polar plunge, make sure you find a good viewing location as you feel the chills of everyone coming out of the water. Join them for a cup of hot chocolate or toast with a glass of whiskey.

Discovery: Explore by Zodiac, kayak or stand-up paddleboard with possible shore landings (weather and ice permitting). To see Antarctica from above or below the horizon book a helicopter[^] or a submersible[^] experience.

Antarctica

There are endless ways to experience Antarctica. You may be on Scenic Eclipse, watching from the comfort of the Observation Lounge, on a Zodiac excursion or immersed in the environment on a kayak or stand-up paddleboard. Walking across the rocky beaches or crunching through the snow, you'll be awed by the dramatic landscapes and unique wildlife that can only be found at the edge of the earth.

Tag 19

Discovery: Explore by Zodiac, kayak or stand-up paddleboard with possible shore landings (weather and ice permitting). To see Antarctica from above or below the horizon book a helicopter[^] or a submersible[^] experience.

At sea

After days of enriching discoveries, this morning it's time to reflect on your journey. As this is one of your last days on board, enjoy a final session in the infrared sauna, relax in the Salt Therapy Lounge or lunch at the Yacht Club. Swap stories and favourite memories with your new friends.

Tag 20

Return to your favourite restaurant with your new friends or indulge in a private dinner in your verandah. Enjoy a nightcap in one of the bars and lounges.

At sea > Ushuaia

Tag 21

Crossing the Drake Passage back to the southern tip of South America, reflect on the magic of the Southern Ocean and the life that calls it home. Watch the wild seas from the comfort of your suite or the large windows of the Observation Lounge, complete with a warming coffee or whiskey.

If you haven't had time to visit the bridge yet, be sure to do so today. Learn more about the technical abilities of The World's First Discovery Yacht and see it in full operation. The bridge is also one of the best viewing areas on the Discovery Yacht.

Ushuaia, Argentina > Buenos Aires

Your voyage ends this morning as you farewell the crew and fellow guests. Disembark after breakfast in Ushuaia, Argentina for your included transfer flight to Buenos Aires where your journey concludes, taking away memories of a truly unforgettable experience.

Please book your flight to depart out of Buenos Aires after 09:30 PM.

Tag 22

^Flights on board our two helicopters and submersible experiences are at additional cost, subject to regulatory approval, availability, weight restrictions, medical approval and weather, ice and tidal conditions. Helicopter not available in South Georgia. #Spa treatments at additional cost. +All drinks on board, including those stocked in your mini bar, are included, except for a very small number of rare, fine and vintage wines, Champagnes and spirits. *Specialty restaurants require a reservation, enquire on board.

The itinerary is a guide only and may be amended for operational reasons. As such Scenic cannot guarantee the voyage will operate unaltered from the itinerary stated above. Locations listed within South Georgia, Falkland Islands and Antarctica are subject to weather and operational conditions. Sightings cannot be guaranteed. Please refer to our terms and conditions for further information.

Im Preis inbegriffen

- Services und Annehmlichkeiten an Bord
- Maximal 229 Gäste an Bord(200 in den Polarregionen)
- Großzügige Suiten mit privater Veranda2:1-Verhältnis
- Gäste- und Butlerservice für jeden Gast
- Zehn kulinarische Erlebnisse in neun Gourmet-Menues – von gemütlicher Atmosphäre bis zum eleganten Fine Dining
- Auswahl an Premium-Markengetränken mit über 101 Whiskysorten
- Scenic Discovery Ausflüge mit dem Zodiac
- Komplettes Kajakprogramm und Stand-up-Paddle-Boarding
- Kostenloser Expeditionsparaka und Wasserflasche sowie die Nutzung von speziellen Polarstiefeln
- Interessantes Vortrags- und Bildungsprogramm mit Experten an Bord
- Spezielle Observation Lounge und Terrasse für die beste Aussicht
- Swarovski-Teleskope an Deck sowie Ferngläser in der Suite, damit Sie keinen aufregenden Momente verpassen
- Senses Spa**auf 551 m2 mit Fitnesscenter, Yoga- und Pilatesstudio
- Außen-Vitalpools nachskandinavischem Vorbild
- Modernes Theater mittäglichem Unterhaltungs- und Bildungsangebot
- WLAN inclusive
- Inlandsflüge inkl. Gebühren
- Flughafentransfers
- Trinkgelder an Bord und an Land

Nicht im Preis inbegriffen

- Internationale Flüge, sofern nicht angegeben
- Reiseversicherungen
- Visa- oder Passgebühren (falls erforderlich)
- persönliche Ausgaben (Einkäufe, optionale Ausflüge)
- sonstige im Programm nicht genannte Leistungen

Ihr Schiff

Ihr Schiff ist die "Scenic Eclipse". Ausführlich stellen wir Ihnen dieses Schiff auf unseren Schiffseiten vor. [Ausführliche Informationen zu diesem Schiff.](#)

Passagiere
199

Bordsprachen


Eisklasse
PC-6

Special
Helikopter

