



IHRE REISE

Antarktische Halbinsel intensiv


<p>Reisetermin</p> <p>30.11.2026 - 12.12.2026</p>	<p>Reisedauer</p> <p>13 Tage</p>	<p>Reederei / Schiff</p> <p>Scenic Eclipse II / SCENIC Luxury Cruises & Tours</p>
--	---	--





Scenic Eclipse II Veranda Suite A, Deck 8

	<p><i>Doppelbelegung</i></p> <p></p> <p>€ 18.495</p> <p>pro Person</p>	<p><i>Einzelbelegung</i></p> <p></p> <p>€ 35.885</p> <p>pro Person</p>
--	--	--

Scenic Eclipse II Veranda Suite B, Deck 7

	<p><i>Doppelbelegung</i></p> <p></p> <p>€ 18.495</p> <p>pro Person</p>	<p><i>Einzelbelegung</i></p> <p></p> <p>€ 35.885</p> <p>pro Person</p>
---	--	--

Scenic Eclipse II Deluxe Veranda Suite CA, Deck 6

	<p><i>Doppelbelegung</i></p> <p></p> <p>€ 18.550</p> <p>pro Person</p>	<p><i>Einzelbelegung</i></p> <p></p> <p>€ 35.995</p> <p>pro Person</p>
---	--	--

Scenic Eclipse II Deluxe Veranda Suite DB, Deck 5



Doppelbelegung


€ 18.550
 pro Person

Einzelbelegung


€ 35.995
 pro Person

Scenic Eclipse II Deluxe Veranda Suite DA, Deck 5



Doppelbelegung


€ 18.550
 pro Person

Einzelbelegung


€ 35.995
 pro Person

Scenic Eclipse II Deluxe Veranda Suite AA, Deck 7



Doppelbelegung


€ 19.265
 pro Person

Einzelbelegung


€ 37.425
 pro Person

Scenic Eclipse II Deluxe Veranda Suite BA, Deck 7



Doppelbelegung


€ 19.265
 pro Person

Einzelbelegung


€ 37.425
 pro Person

Scenic Eclipse II Grand Deluxe Veranda Suite CD, Deck 6



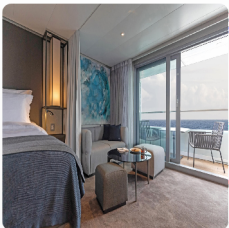
Doppelbelegung


€19.485
 pro Person

Einzelbelegung


€37.865
 pro Person

Scenic Eclipse II Grand Deluxe Veranda Suite DD, Deck 5



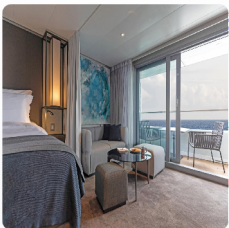
Doppelbelegung


€19.485
 pro Person

Einzelbelegung


€37.865
 pro Person

Scenic Eclipse II Grand Deluxe Veranda Suite AD, Deck 8



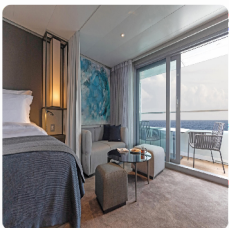
Doppelbelegung


€19.925
 pro Person

Einzelbelegung


€38.745
 pro Person

Scenic Eclipse II Grand Deluxe Veranda Suite BD, Deck 7



Doppelbelegung


€19.925
 pro Person

Einzelbelegung


€38.745
 pro Person

Scenic Eclipse II Spa Suite S, Deck 8



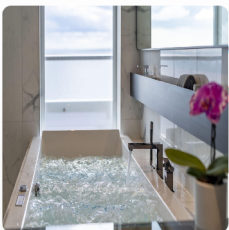
Doppelbelegung


€ 23.445
 pro Person

Einzelbelegung


€ 45.785
 pro Person

Scenic Eclipse II Spa Suite SB, Deck 9



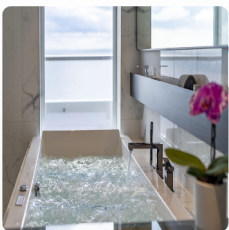
Doppelbelegung


€ 23.665
 pro Person

Einzelbelegung


€ 46.225
 pro Person

Scenic Eclipse II Spa Suite SA, Deck 9



Doppelbelegung


€ 23.665
 pro Person

Einzelbelegung


€ 46.225
 pro Person

Scenic Eclipse II Panorama Suite P, Deck 8



Doppelbelegung


€ 36.150
 pro Person

Einzelbelegung


€ 71.195
 pro Person

Scenic Eclipse II Grand Panorama Suite GP, Deck 6



Doppelbelegung



€38.735

pro Person

Einzelbelegung



€76.365

pro Person

Scenic Eclipse II Owners Penthouse Suite OP, Deck 9



Doppelbelegung



€42.750

pro Person


Einzelbelegung




€84.395

pro Person

Scenic Eclipse II Veranda Suite C, Deck 6




Doppelbelegung




Nicht verfügbar

Einzelbelegung




Nicht verfügbar

Scenic Eclipse II Veranda Suite D, Deck 5




Doppelbelegung



Nicht verfügbar

Einzelbelegung



Nicht verfügbar

Scenic Eclipse II Two-Bedroom Penthouse Suite TP, Deck 9



Doppelbelegung



Nicht verfügbar

Einzelbelegung



Nicht verfügbar



Buenos Aires, Argentina

Tag 1

Welcome to Buenos Aires, where you'll have an overnight hotel stay. Perhaps plan to spend some time in the city, nicknamed the 'Paris of South America'. Resplendent with Belle Epoque buildings, sidewalk cafes and green spaces, there's the fiery passion of Latin America - a collective love for football, flame-cooked meats (asado) and the tango.

Some of the highlights are La Boca, a colourful, creative mecca with a must-do art walk, and San Telmo, a former aristocratic neighbourhood that was abandoned during a 19th-century epidemic. Mansions were turned into conventillos (shared housing), boutique hotels, antique shops, and tango clubs, exuding a captivating bohemian vibe.

Buenos Aires > Ushuaia

Tag 2

Fly from Buenos Aires to Ushuaia, the main island of Tierra del Fuego and the southernmost city in the world. The Captain and crew will warmly greet you as you board your ultra-luxury Discovery Yacht, Scenic Eclipse.

Toast the start of your once-in-a-lifetime expedition as you depart South America and cruise through the calm and scenic Beagle Channel, named so for the ship that carried Charles Darwin on his five-year discovery journey. Admire the dramatic views of the Andean mountains from the comfort of your private verandah or from the Observation Deck with its commanding view of the bow.

At sea

Tag 3

Wake up in your own time as we cruise across the Drake Passage, the infamous waterway that connects South America to Antarctica. Perhaps ask your butler for breakfast to be delivered to your spacious suite or meet fellow guests in the Yacht Club.

Today, join an introductory presentation about your polar expedition by the Polar Discovery Team in the state-of-the-art theatre. Feel the excitement building as they explain how your Zodiac and other Discovery Excursions will work in the coming days. The theatre is where you can watch talks, lectures, movies and documentaries during the day. At night, enjoy world-class productions from musical theatre and cabaret to pop music, dance and fun interactive game shows.

At sea

Tag 4

Today you will enter Antarctic waters, an unpredictable but stunningly beautiful environment that always surprises. Put on your complimentary polar parka and head to the Observation Deck to spot icebergs for the first time – it's a feeling that will stay with you forever.

Watch out for whale blows in the distance and your expert polar Discovery team will be on hand to provide and answer any insightful information. Comprised of up to 20 members, this team of geologists, historians, ornithologists, marine biologists, and glaciologists is at the heart of your Antarctic Voyage.

Antarctica

Tag 5

Slide open the floor-to-ceiling doors of your verandah suite to see icebergs sculpted by nature and glacial mountains rising thousands of metres from the ocean. Antarctica is a birdwatcher's paradise, with more than 40 different species, so keep your eyes peeled for wandering albatrosses, which have the largest wingspan of any flying bird, as well as shearwaters, giant petrels and more.

Due to the extraordinary nature of the region, excursions throughout your Expedition Voyage are dependent on the ice and weather conditions. Your experienced Captain and specialist Discovery Team, who have made countless journeys to Antarctica, will use their expertise to design your voyage from day to day, making the most of 18–20 hours of daylight.

Discovery: Daily experiences may include cruising on Zodiacs, stepping ashore to view vast penguin rookeries or historic huts, and kayaking or paddle boarding around icebergs. Wherever your voyage takes you, you will have countless “pinch me” moments.

Antarctica

Tag 6

Portal Point – a former British refuge hut – may be a potential landing site during your voyage.

Or you may visit Deception Island as part of your itinerary. Nestled in the South Shetland Islands archipelago, it is one of the only places in the world that ships can sail directly into the centre of a submerged caldera of an active volcano. With her world-class design and state-of-the-art technology, Scenic Eclipse can sail through a rocky gap into the horseshoe-shaped harbour. The island is also home to a few small scientific outposts and hundreds of thousands of chinstrap penguins.

Tonight could be the night you enjoy Sushi @ Koko's with your new friends. Stay up late in the bar or retire to the library for a moment of blissful solitude before bed.

Antarctica

Various species of penguins can be found in Antarctic and the sub-Antarctic region, with around 12 million penguins living on the Peninsula, including Adélie, Chinstrap, Gentoo, and the very rare Emperor penguins. Guided by the expert Polar Discovery Team, you'll witness colonies up close; hear their mighty calls and watch as they clumsily waddle along and interact with each other.

Tag 7

Whales are another majestic creature you may encounter, whether a minke, a humpback or an Orca. Watch them from the comfort of your ultra-luxury Discovery Yacht, in a Zodiac with an experienced Polar Discovery Team member, or from their level in a kayak or stand-up paddleboard – a breathtaking experience.

Discovery: When enjoying daily Scenic Discovery excursions, ask for your expert Discovery Leader for photography tips and guidance on how to spot the wildlife around you. They will help you immortalise these incredible moments while cruising on the Zodiacs, kayaking and stand-up paddleboarding around impressive ice formations.

Antarctica

Tag 8

Lemaire Channel^{^^}, renowned for its picturesque views and often referred to as 'Kodak Alley', could be our next exciting destination. If during your voyage the Scenic Eclipse weaves through this channel, make sure you set your alarm and embrace the cool air from the Observation Terrace. Pass through the 11-kilometre-long channel, just 700 metres wide at its narrowest point, and be amazed at the dramatic rocky mountains and glowing blue icebergs so close to the ship.

In between Scenic Discovery experiences, enjoy a specialty tea or coffee in the Observation Lounge and watch the world float by through Swarovski telescopes.

Antarctica

Tag 9

In the distance on a clear day you can see Mount Francis^{^^} standing tall as Anvers Island's highest peak, showcasing the rugged beauty of Antarctica. Every day is unique, you might get the chance to hike or spend time on the pebbled beach, enjoying the view surrounded by curious penguins.

Back on board, explore some of Scenic Eclipse's indulgent spaces, from the welcoming Observation Lounge to the expansive Senses Spa#. Soothe your muscles in the sauna or heated therapy lounge, join a yoga or Pilates class. Choose one of up to 10 world-class dining experiences on board tonight.

Antarctica

Tag 10

Be sure to pack your swimming suit because you could be going for a swim today. For many, the polar plunge is a once-in-a-lifetime opportunity and a rite of passage on an expedition to Antarctica. Once throughout your voyage, Scenic Eclipse will stop, and the team will set up the marina ready for the brave people who want to jump into the freezing Antarctic waters.

Excitement will spread through the Discovery Yacht, and you will start hearing the contagious nervous laughter. As you stand on the edge, ready to jump, you will feel the adrenaline rush while you second-guess whether this is a good idea. When you jump, the moment before you hit the water will feel like it goes forever, but soon, an invigorating, exciting, and surprisingly refreshing sensation will take over.

If you choose to skip the polar plunge, make sure you find a good viewing location as you feel the chills of everyone coming out of the water. Join them for a cup of hot chocolate or toast with a glass of whiskey.

At sea

Cruising the Drake Passage back to the tip of South America, there is plenty of time to indulge in the ultra-luxury of your Discovery Yacht and reflect on the magic moments you've experienced in the Southern Ocean.

Tag 11

Freshly squeezed juice, steaming barista-made coffee or tea delivered to your door by the butler will help start your day. Head to the gym for an invigorating workout or the studio for a Pilates class, some guided stretching or aerial yoga.

In the evening, settle in at the spacious Scenic Lounge Bar to enjoy your beverage of choice, whether it be aged whiskey or a glass of wine. With Scenic's signature all-inclusive ultra-luxury philosophy, indulge in top shelf spirits, over 130 whiskeys, a premium wine list and French champagne.

At sea > Ushuaia

Tag 12

Have you visited the bridge yet? Thanks to the Captain's open bridge policy, guests are welcome any time to learn more about the technical abilities of The World's First Discovery Yacht and see it in full operation. The bridge is also one of the best viewing areas on the ship.

Make sure you book a treatment# at the tranquil Senses Spa before your Discovery expedition ends. Perhaps an ESPA facial or massage# or an alternative therapy including Ayurvedic massage or Japanese shiatsu. Afterwards, hold on to that feeling of calm for a while longer in the Zen-like space of the Vitality Lounge.

Ushuaia, Argentina > Buenos Aires

Your voyage ends this morning as you farewell the crew and fellow guests. Disembark after breakfast to fly to Buenos Aires, taking away memories of a truly unforgettable experience.

Please book your flight to depart out of Buenos Aires after 09:30 PM.

Tag 13

The itinerary is a guide only and may be amended for operational reasons. As such Scenic cannot guarantee the voyage will operate unaltered from the itinerary stated above. Please refer to our terms and conditions for further information.

^^Subject to weather and operational conditions. Sightings cannot be guaranteed.

^Reservation required

^Flights on board our two helicopters and submersible experiences are at additional cost, subject to regulatory approval, availability, weight restrictions, medical approval and weather, ice and tidal conditions. #Spa treatments at additional cost. +All drinks on board, including those stocked in your mini bar, are included, except for a very small number of rare, fine and vintage wines, Champagnes and spirits.

Im Preis inbegriffen

- Services und Annehmlichkeiten an Bord
- Maximal 229 Gäste an Bord(200 in den Polarregionen)
- Großzügige Suiten mit privater Veranda2:1-Verhältnis
- Gäste- und Butlerservice für jeden Gast
- Zehn kulinarische Erlebnisse in neun Gourmet-Menues – von gemütlicher Atmosphäre bis zum eleganten Fine Dining
- Auswahl an Premium-Markengetränken mit über 101 Whiskysorten
- Scenic Discovery Ausflüge mit dem Zodiac
- Komplettes Kajakprogramm und Stand-up-Paddle-Boarding
- Kostenloser Expeditionsparaka und Wasserflasche sowie die Nutzung von speziellen Polarstiefeln
- Interessantes Vortrags- und Bildungsprogramm mit Experten an Bord
- Spezielle Observation Lounge und Terrasse für die beste Aussicht
- Swarovski-Teleskope an Deck sowie Ferngläser in der Suite, damit Sie keinen aufregenden Momente verpassen
- Senses Spa**auf 551 m2 mit Fitnesscenter, Yoga- und Pilatesstudio
- Außen-Vitalpools nachskandinavischem Vorbild
- Modernes Theater mittäglichem Unterhaltungs- und Bildungsangebot
- WLAN inclusive
- Inlandsflüge inkl. Gebühren
- Flughafentransfers
- Trinkgelder an Bord und an Land

Nicht im Preis inbegriffen

- Internationale Flüge, sofern nicht angegeben
- Reiseversicherungen
- Visa- oder Passgebühren (falls erforderlich)
- persönliche Ausgaben (Einkäufe, optionale Ausflüge)
- sonstige im Programm nicht genannte Leistungen

Ihr Schiff

Ihr Schiff ist die "Scenic Eclipse II". Ausführlich stellen wir Ihnen dieses Schiff auf unseren Schiffseiten vor. [Ausführliche Informationen zu diesem Schiff.](#)

Passagiere
199

Bordsprachen


Eisklasse
PC-6

Special
Helikopter

